




**Wisconsin
Top Ten Federal Health Citations
1/1/13 thru 6/30/13**

| Rank | State Rank 2012 | Tag | Description of Regulation | Number of Citations | Number of Cites at Harm or IJ |
|---------|---|------|---|---------------------|-------------------------------|
| 1 | 1 | F441 | Infection control program designed to prevent the development and control the spread of infection | 115 | 2 |
| 2 | 3 | F371 | Food stored, prepared, distributed, and served in a manner that prevents food borne illness | 95 | 2 |
| 3 | 6 | F314 | Services and treatment to prevent and/or to heal pressure ulcers | 94 | 19 |
| 4 | 2 | F323 | Facility is free of hazardous environment/Supervision and assistive devices to prevent accidents | 86 | 17 |
| 5 | 5 | F225 | Report and investigate allegations of abuse, mistreatment, neglect and misappropriation | 85 | 5 |
| 6 | 8 | F329 | Each resident's drug regimen is free of unnecessary drugs | 77 | 1 |
| 7 (tie) |  | F280 | Care plan periodically reviewed and updated | 57 | 0 |
| 7 (tie) | 9 | F309 | Care and services to attain/maintain highest practicable level of well-being | 57 | 17 |
| 9 | 10 | F315 | Care and services to restore as much normal bladder function as possible | 55 | 3 |
| 10 | 7 | F279 | Develop comprehensive care plan | 53 | 0 |



STATE OF WISCONSIN / DEPARTMENT OF HEALTH SERVICES
 Division of Quality Assurance / Bureau of Nursing Home Resident Care

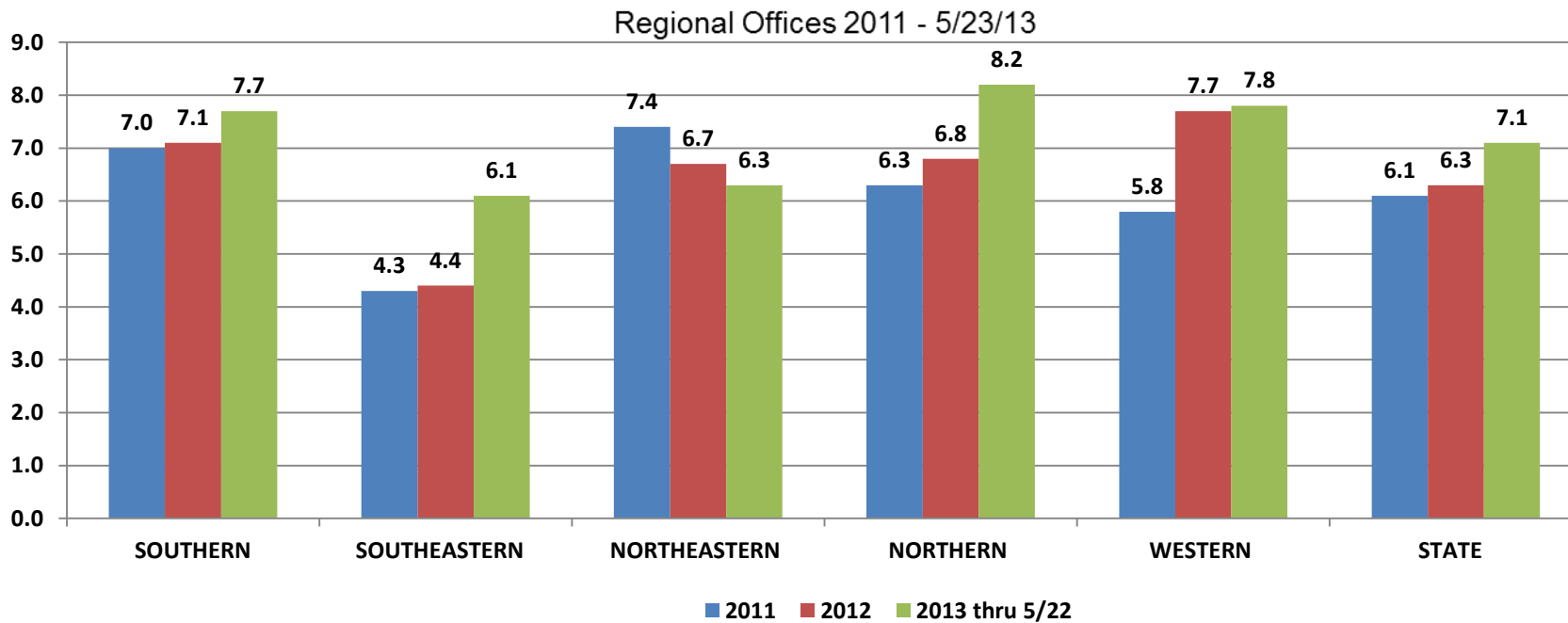
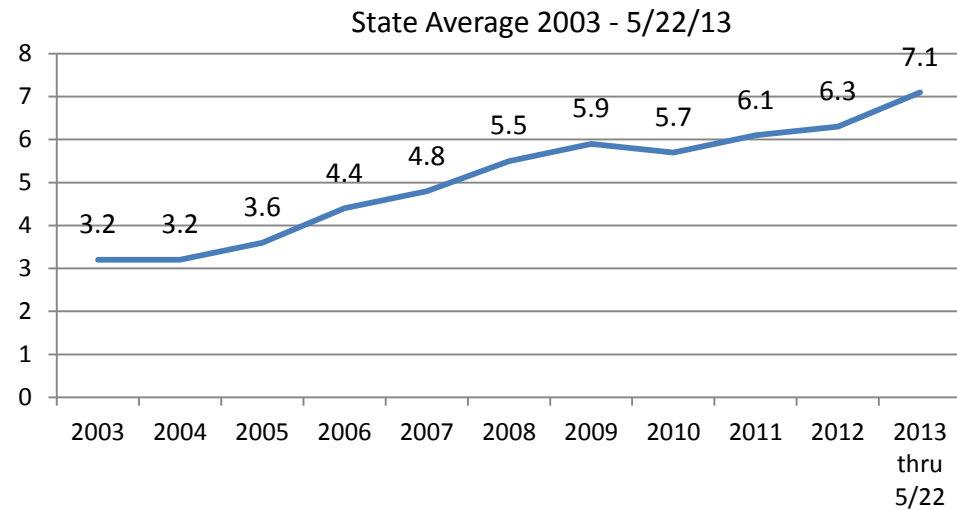
TOP TEN FEDERAL HEALTH CITATIONS – NATION, STATE, REGIONAL OFFICE – 1/1/13 thru 6/30/13

| Nation | State | Southern (Madison) | Southeastern (Milwaukee) | Northeastern (De Pere) | Northern (Rhineland) | Western (Eau Claire) |
|---|--|---|---|--|---|--|
| F323 – supervision to prevent accidents (2514) | F441 – infection control (115) | F371 – store, prepare, and serve food under sanitary conditions (29) | F225 – investigate allegations of abuse (23) | F441 – infection control (35) | F441 – infection control (16) | F441 – infection control (29) |
| F441 – infection control (2363) | F371 – store, prepare, and serve food under sanitary conditions (95) | F282 – care in accordance with care plan (20) | F323 – supervision to prevent accidents (22) | F314 – prevention of pressure (34) | F314 – prevention of pressure ulcers (13) | F371 – store, prepare, and serve food under sanitary conditions (27) |
| F371 – store, prepare, and serve food under sanitary conditions (1988) | F314 – prevention of pressure ulcers (94) | F225 - investigate allegations of abuse (19) | F329 – Drug regimen is free of unnecessary drugs (19) | F371 – store, prepare, and serve food under sanitary conditions (26) | F323 – supervision to prevent accidents (11) | F323 – supervision to prevent accidents (20) |
| F309 - care promotes highest level of well- being (1981) | F323 – supervision to prevent accidents (86) | F441 – infection control (19) | F314 – prevention of pressure ulcers (17) | F315 – services to restore normal bladder function and prevent UTIs (19) | F225 - investigate allegations of abuse (11) | F329 – Drug regimen is free of unnecessary drugs (19) |
| F329 – Drug regimen is free of unnecessary drugs (1446) | F225 - investigate allegations of abuse (85) | F309 - care promotes highest level of well-being (17) | F279 – develop comprehensive care plan (16) | F323 – supervision to prevent accidents (19) | F309 – care promotes highest level of well-being (9) | F280 – periodically review and revise the plan of care (18) |
| F279 – develop comprehensive care plan (1407) | F329 – Drug regimen is free of unnecessary drugs (77) | F314 – prevention of pressure ulcers (17) | F309 – care promotes highest level of well-being (16) | F225 - investigate allegations of abuse (18) | F312 – services to maintain good nutrition, grooming, personal and oral hygiene (8) | F282 – care in accordance with care plan (15) |
| F514 - documentation (1144) | F280 – Care plan periodically reviewed and updated (57) | F329 – Drug regimen is free of unnecessary drugs (16) | F441 – infection control (15) | F425 – medication system assures accurate receipt and administration (16) | F315 - services to restore normal bladder function and prevent UTIs (8) | F225 - investigate allegations of abuse (14) |
| F431 – labeling of drugs and biological (1143) | F309 - care promotes highest level of well-being (57) | F157 – contact MD after significant condition change (14) | F157 – contact MD after significant condition change (13) | F312 – services to maintain good nutrition, grooming, personal and oral hygiene (15) | F226 – Develop and implement policies prohibiting abuse (7) | F279 – develop comprehensive care plan (14) |
| F241 – resident dignity (1131) | F315 – services to restore normal bladder function and prevent UTIs (55) | F280 – periodically review and revise the plan of care (14) | F315 – services to restore normal bladder function and prevent UTIs (12) | F329 – Drug regimen is free of unnecessary drugs (14) | F241 – resident dignity (7) | F514 - documentation (14) |
| F281 – services provided in accordance with professional standards of practice (1071) | F279 – develop comprehensive care plan (53) | F281 – services provided in accordance with professional stds. of practice (14) | F425 – medication system assures accurate receipt and administration (11) | F226 – Develop and implement policies prohibiting abuse (13) | F329 – Drug regimen is free of unnecessary drugs (7) | F314 – prevention of pressure ulcers (12) |
| | | F323 – supervision to prevent accidents (14) | | | | |

ITALICS – not in State’s top ten New to Top Ten compared to entity’s 2012 data

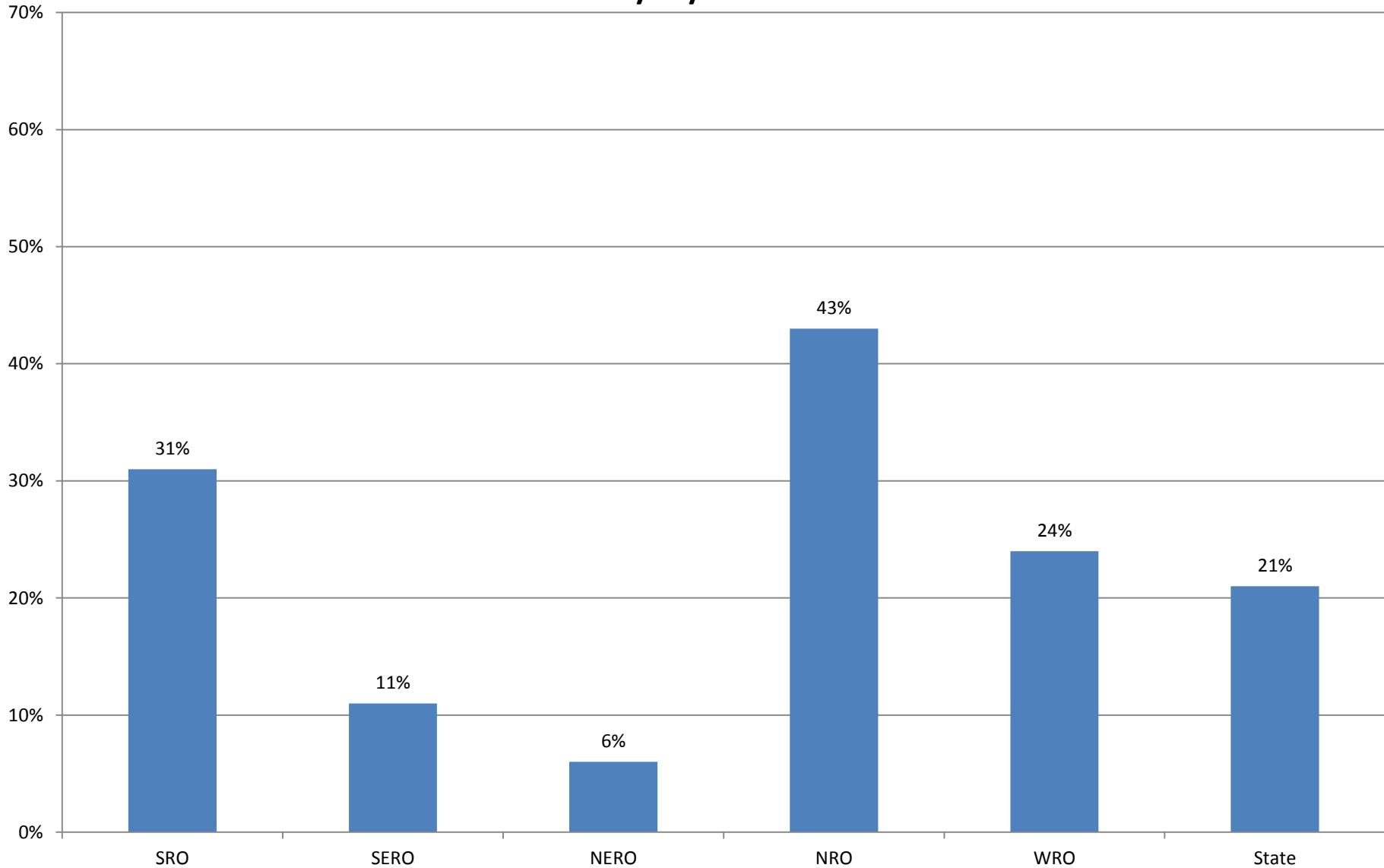


Average Number Federal Health Citations per Recertification Survey



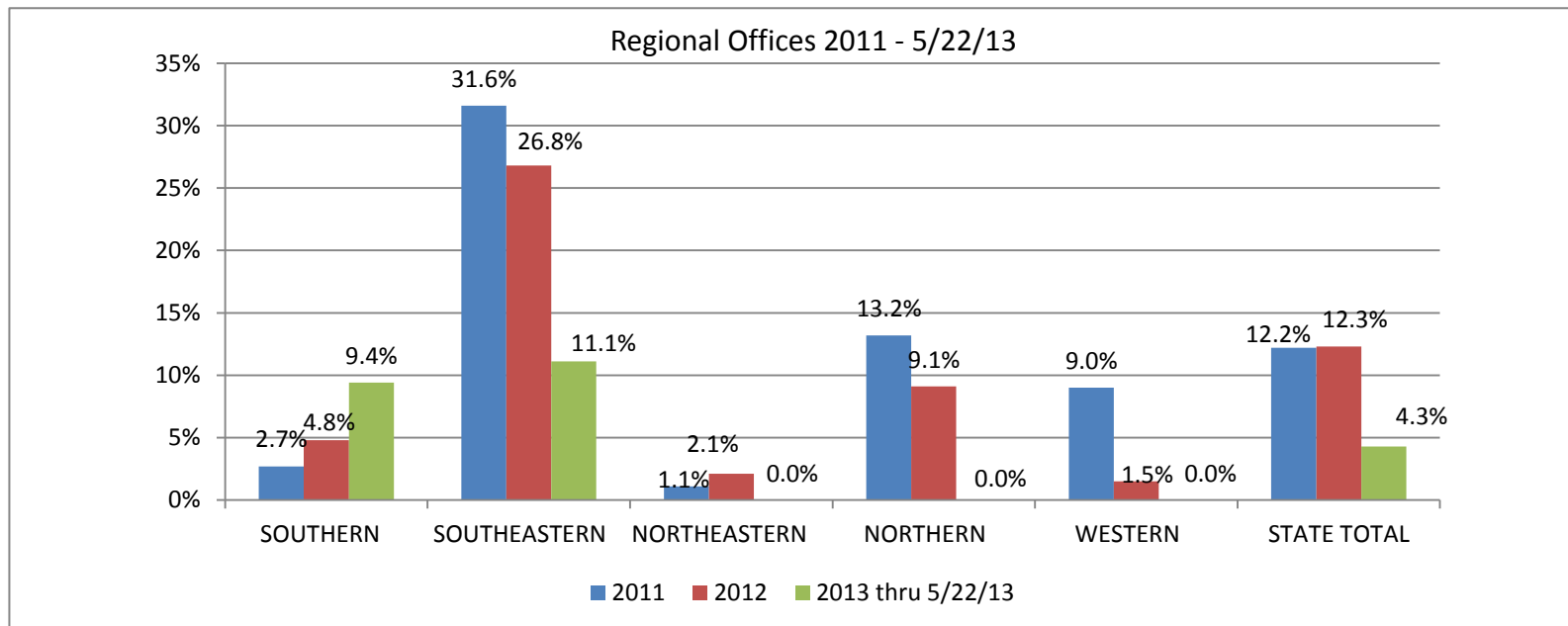
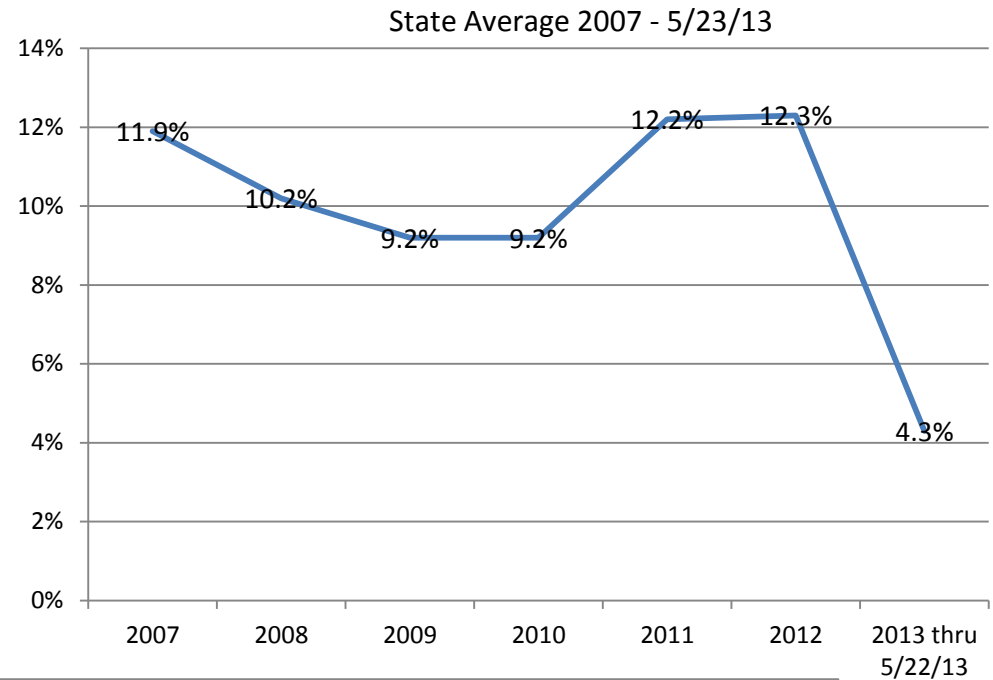


Percentage of Recertification Surveys with Finding of Actual Harm thru 5/22/2013





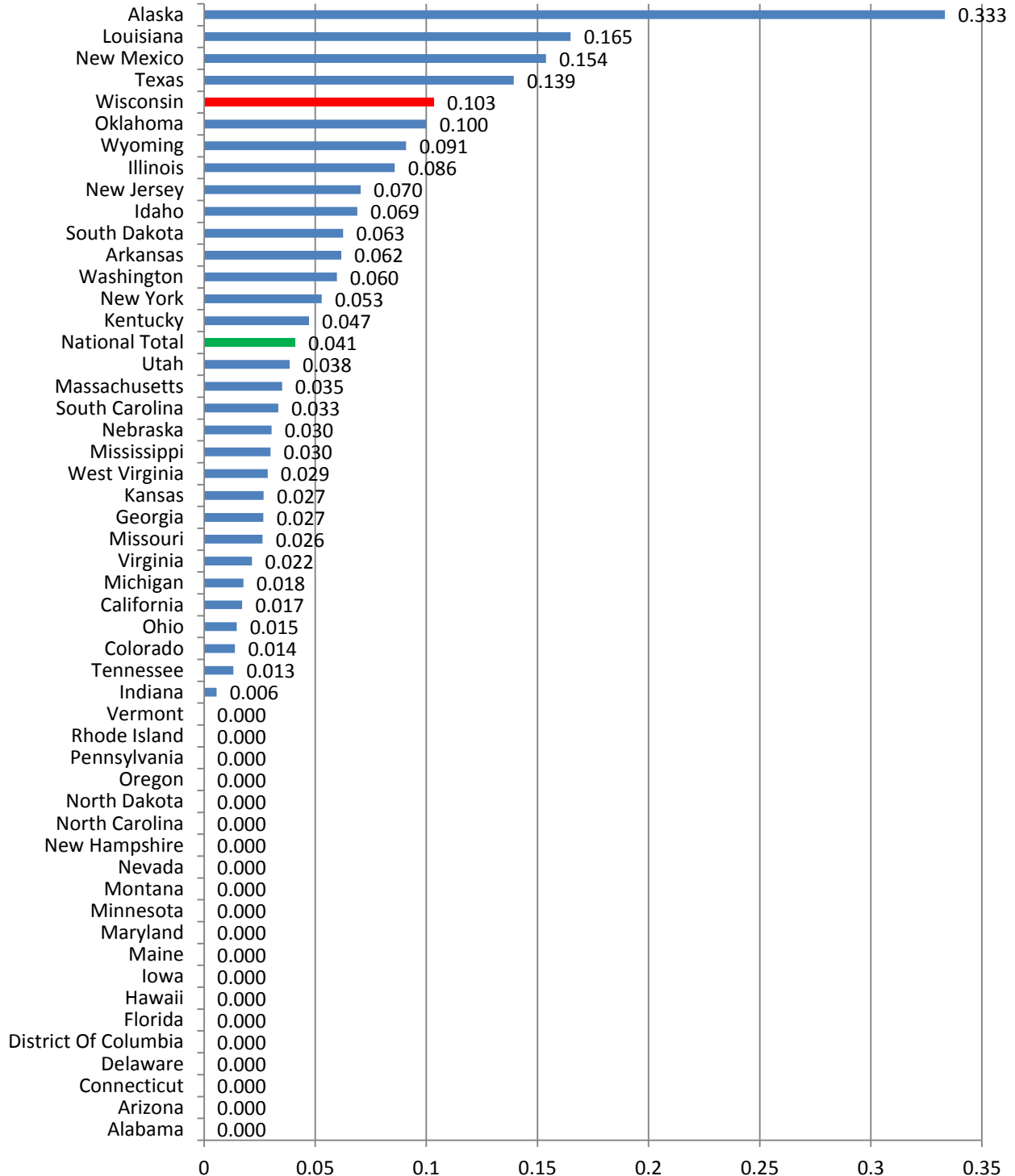
Percentage of Deficiency-Free Health Recertification Surveys (federal and state)





Average # Immediate Jeopardy Citations per Recertification Survey 1/1/13 thru 6/18/13

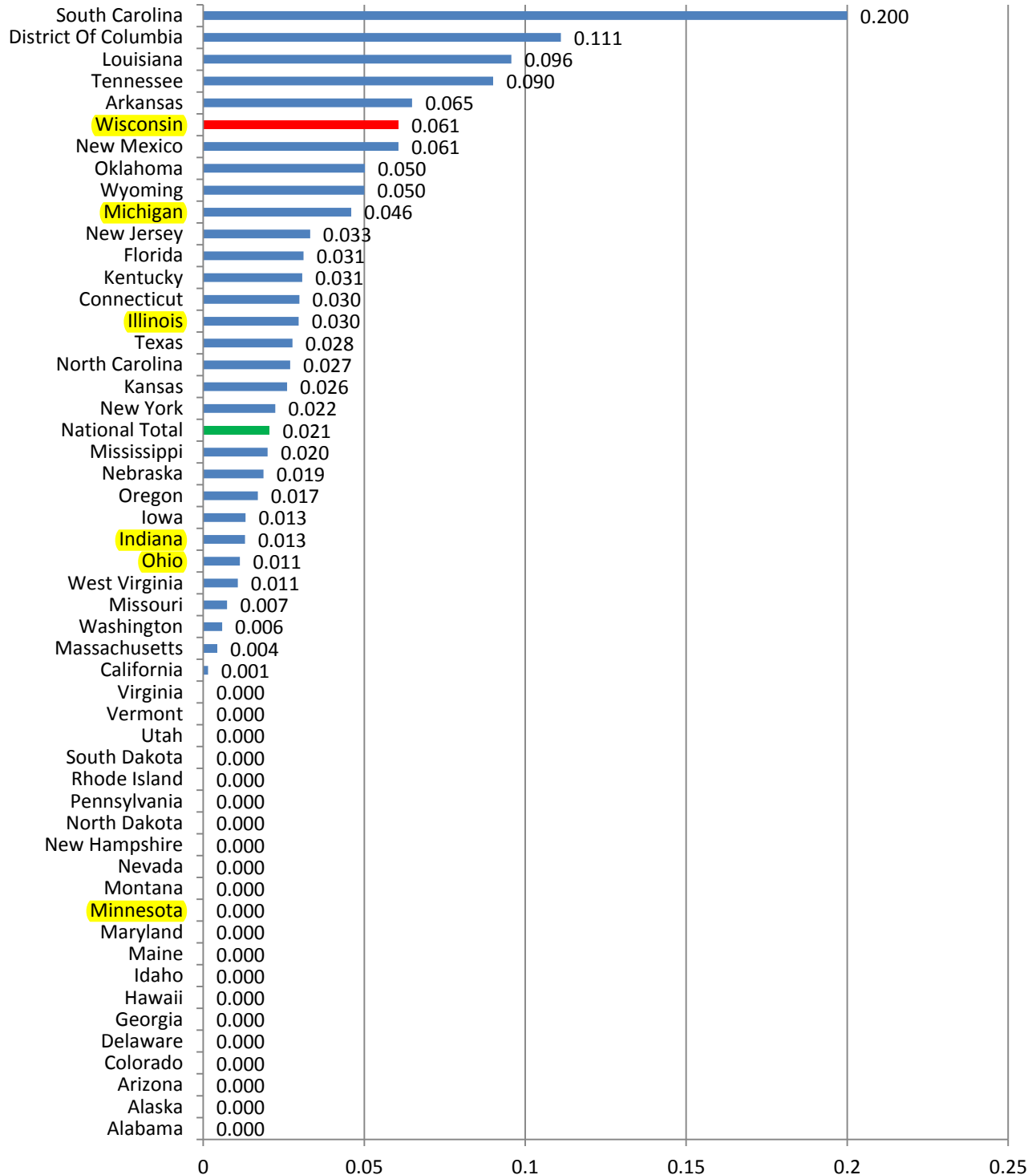
S&C PDQ data





Average Number of Immediate Jeopardy Citations per Complaint Survey 1/1/13 - 6/18/13

S&C PDQ data



Highlighted States are the six States under the CMS Region V (Chicago) jurisdiction.

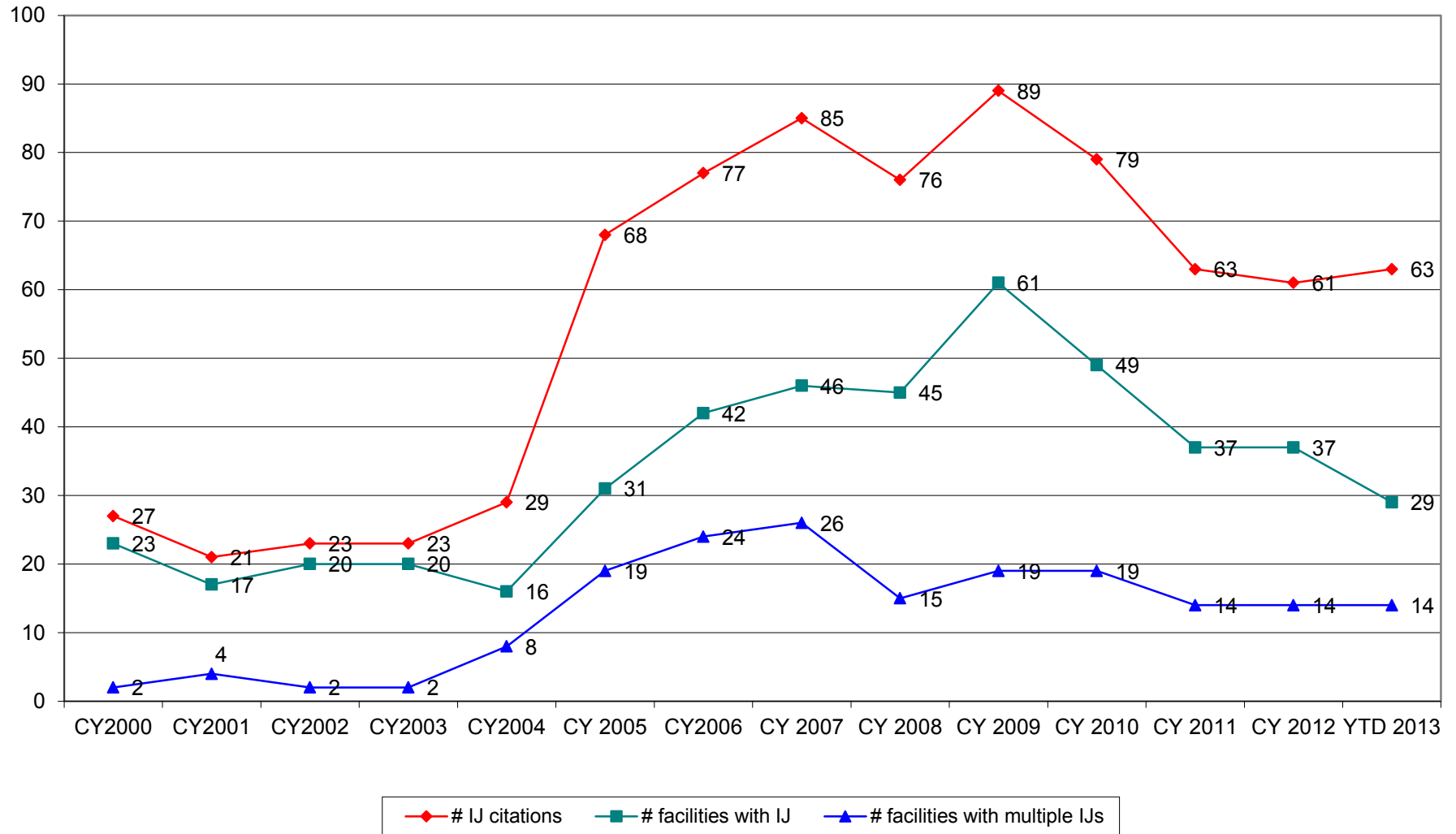


Wisconsin Top Ten Federal Regulations Leading to Citation at Immediate Jeopardy 1/1/2013 – 08/23/2013

| Rank | Tag | Description of Regulation | # of Citations YTD 2013 | # of Citations 2012 |
|------|------|--|----------------------------|------------------------|
| 1 | F309 | Care and services to attain/maintain highest practicable level of well-being | 8 | 8 |
| 2 | F223 | Each resident has the right to be free from abuse | 7 | 3 |
| | F226 | Develop and implement policies prohibiting abuse | 7 | 4 |
| 4 | F225 | Report and investigate allegations of abuse, mistreatment, neglect and misappropriation | 6 | 4 |
| | F323 | Facility is free of hazardous environment/Supervision and assistive devices to prevent accidents | 6 | 14 |
| 6 | F314 | Services and treatment to prevent and/or to heal pressure ulcers | 5 | 5 |
| | F157 | Promptly consult with a physician following a significant condition change | 5 | 5 |
| 8 | F281 | Services meet professional standards of practice | 3 | 1 |
| | F490 | Administration | 3 | 2 |
| 10 | | Five tags (F250, F333, F371, F425, F441) tied with 2 citations each | 2 | |

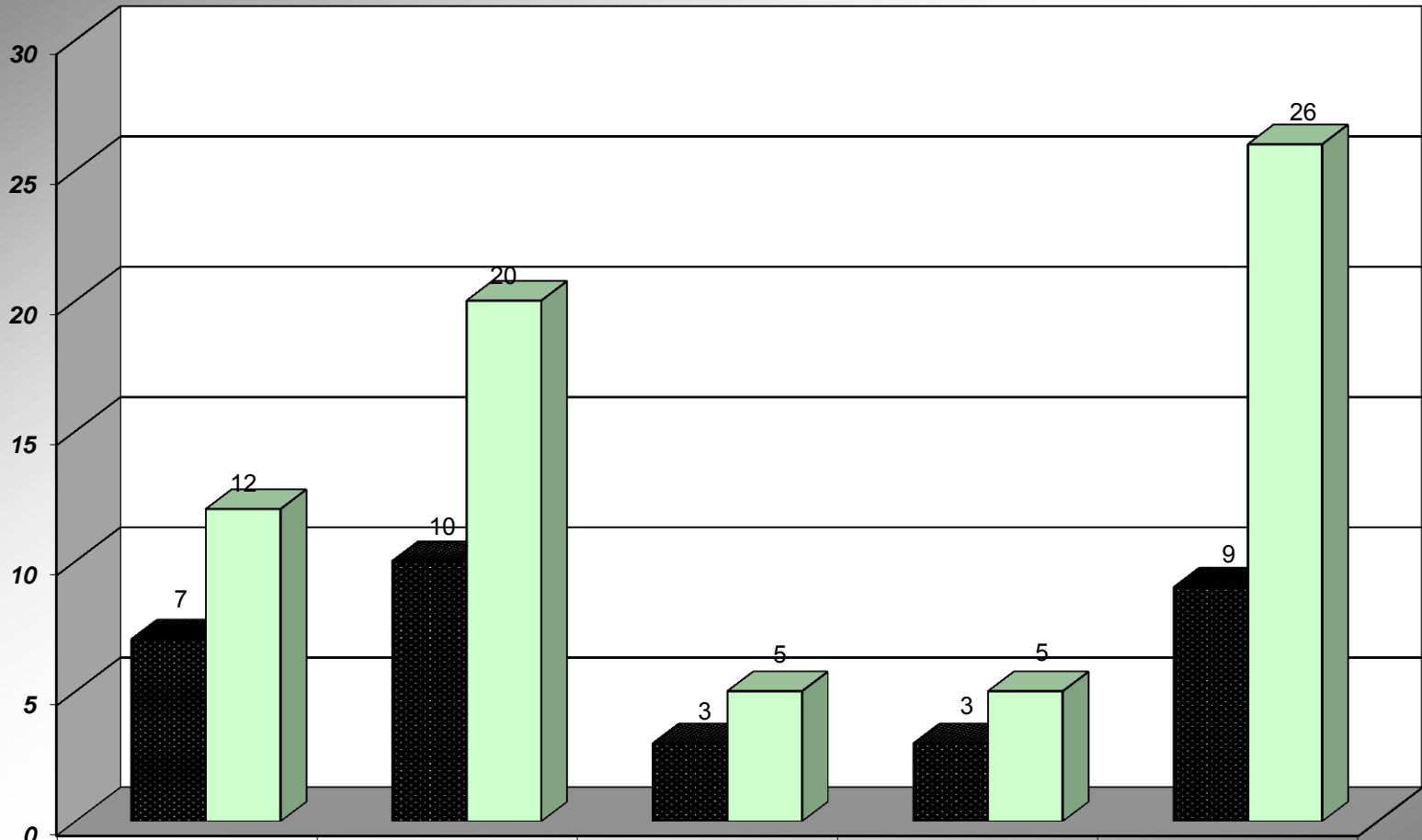


Immediate Jeopardy Citations 2000 - YTD 2013





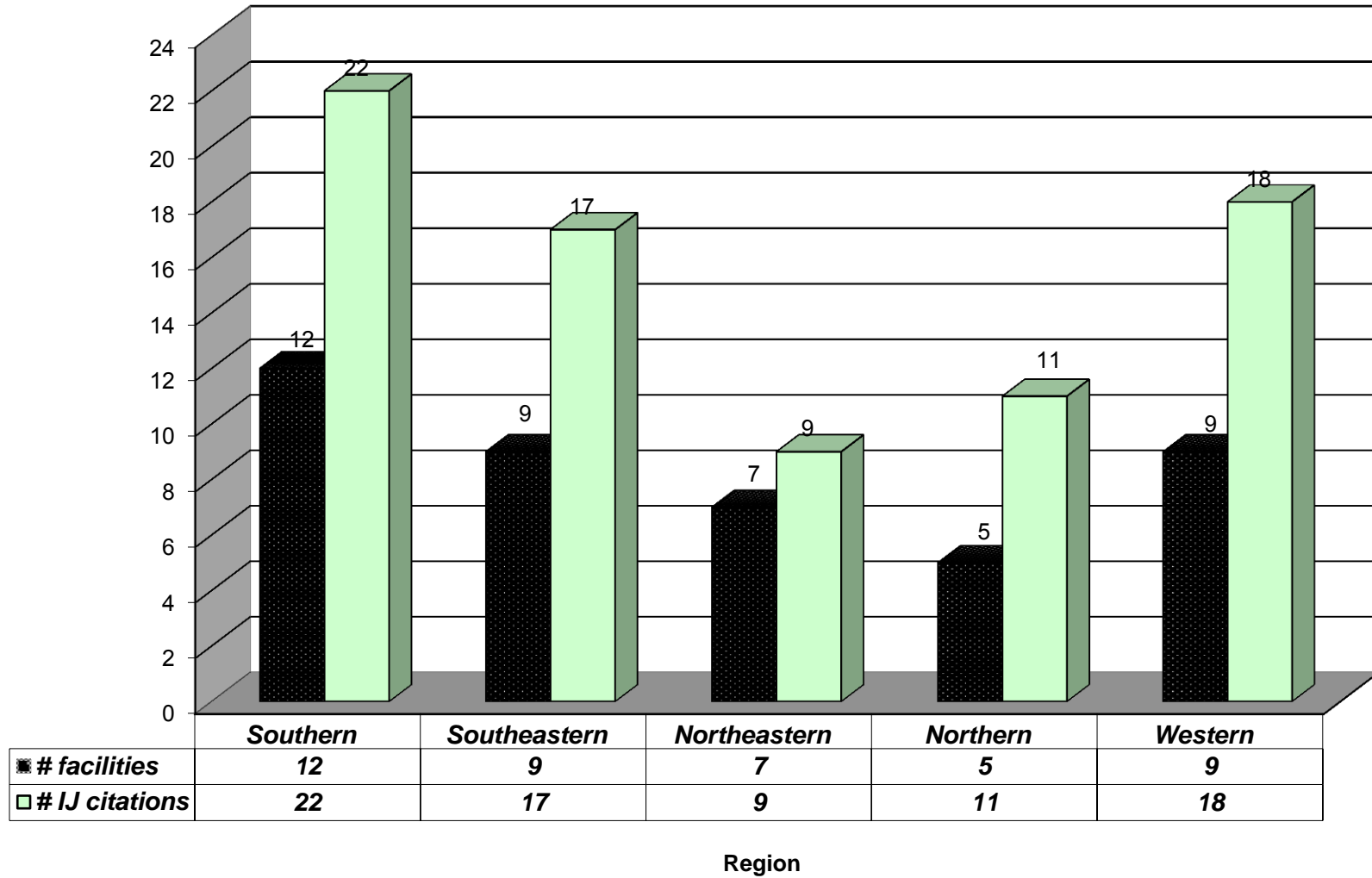
Immediate Jeopardy Citations by Regional Office 2005



| | <i>Southern</i> | <i>Southeastern</i> | <i>Northeastern</i> | <i>Northern</i> | <i>Western</i> |
|------------------|-----------------|---------------------|---------------------|-----------------|----------------|
| ■ # facilities | 7 | 10 | 3 | 3 | 9 |
| ■ # IJ citations | 12 | 20 | 5 | 5 | 26 |

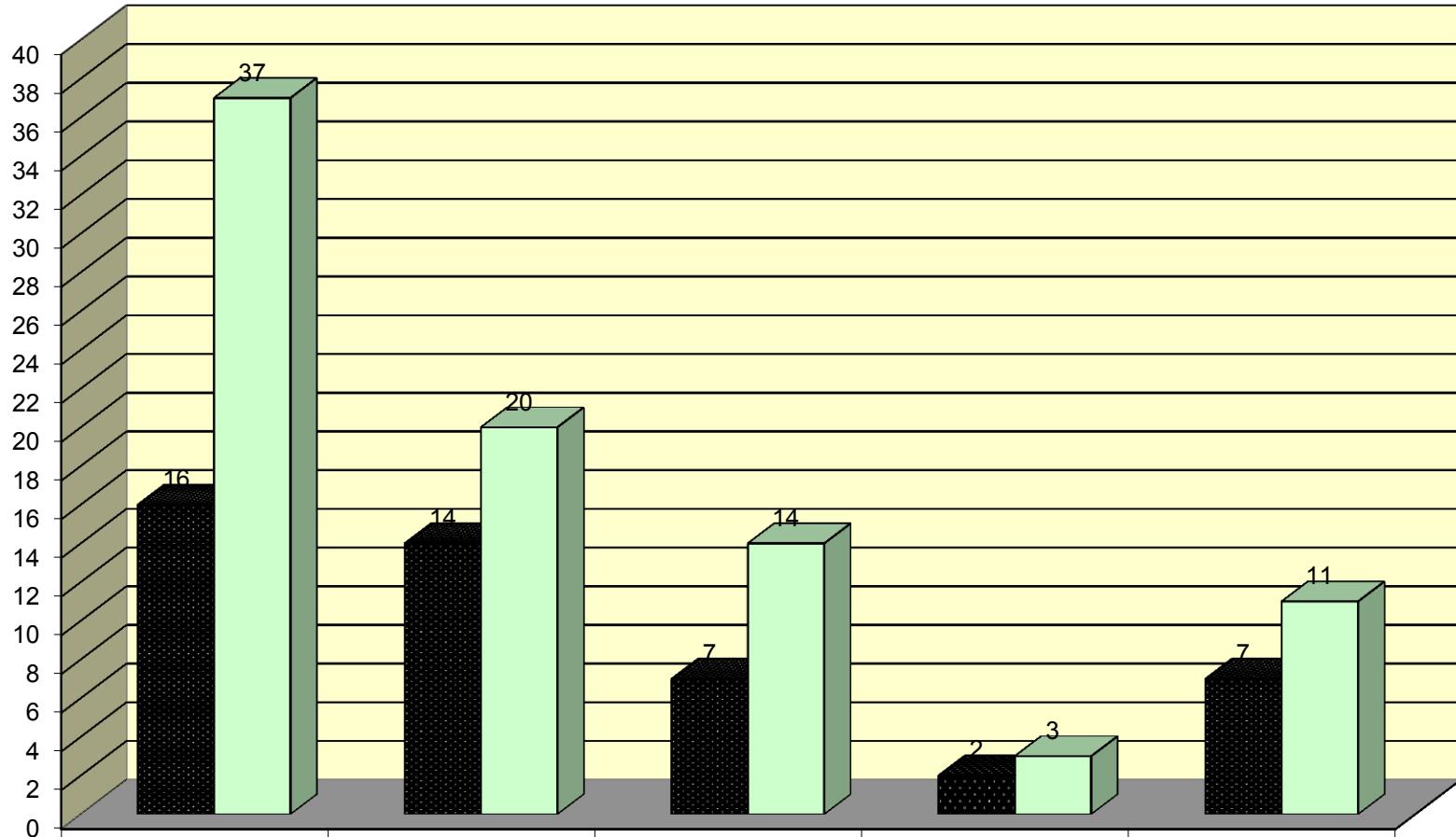


Immediate Jeopardy Citations by Regional Office 2006





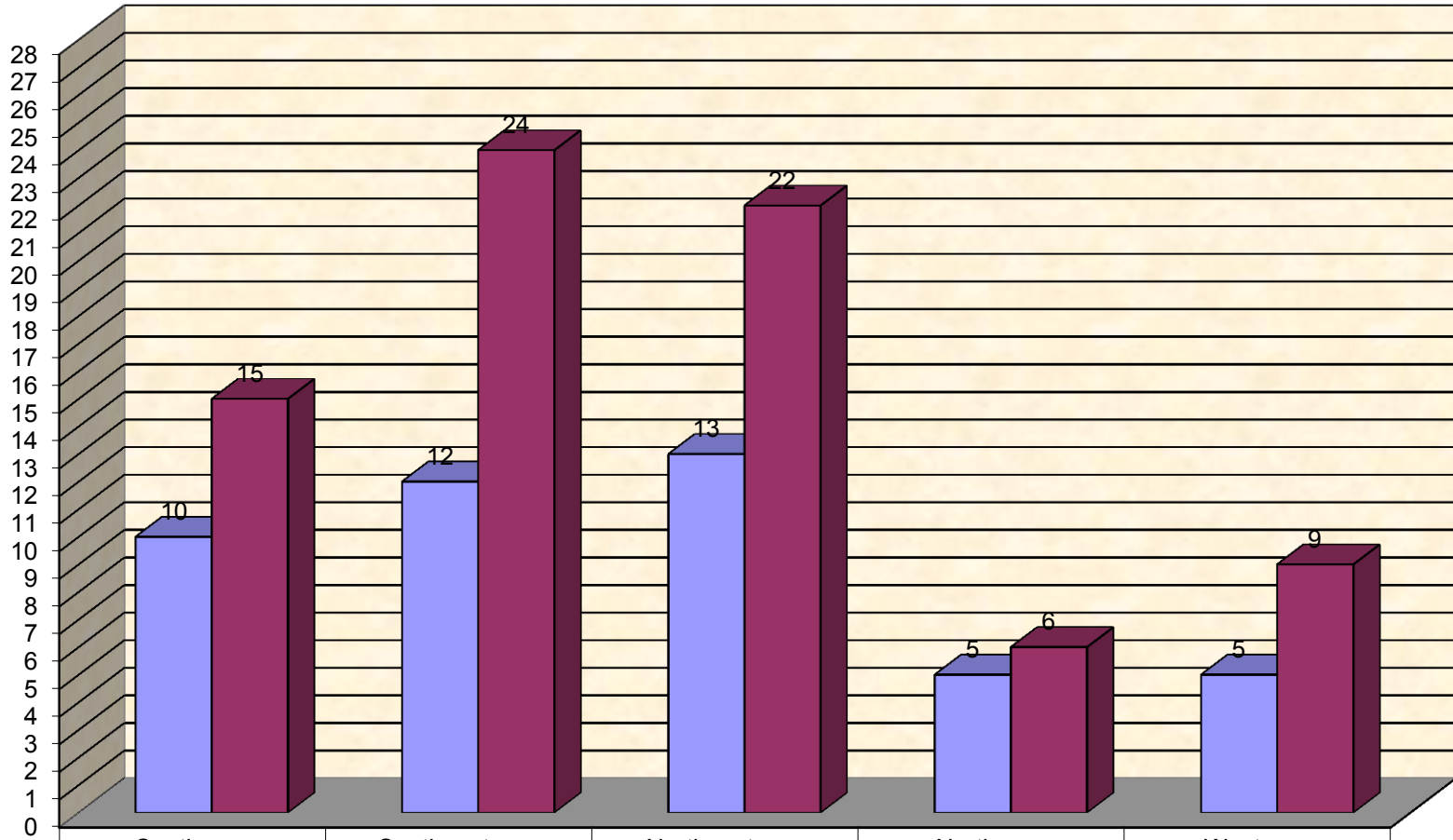
Immediate Jeopardy Citations by Regional Office 2007



| | Southern | Southeastern | Northeastern | Northern | Western |
|------------------|----------|--------------|--------------|----------|---------|
| ■ # facilities | 16 | 14 | 7 | 2 | 7 |
| □ # IJ citations | 37 | 20 | 14 | 3 | 11 |



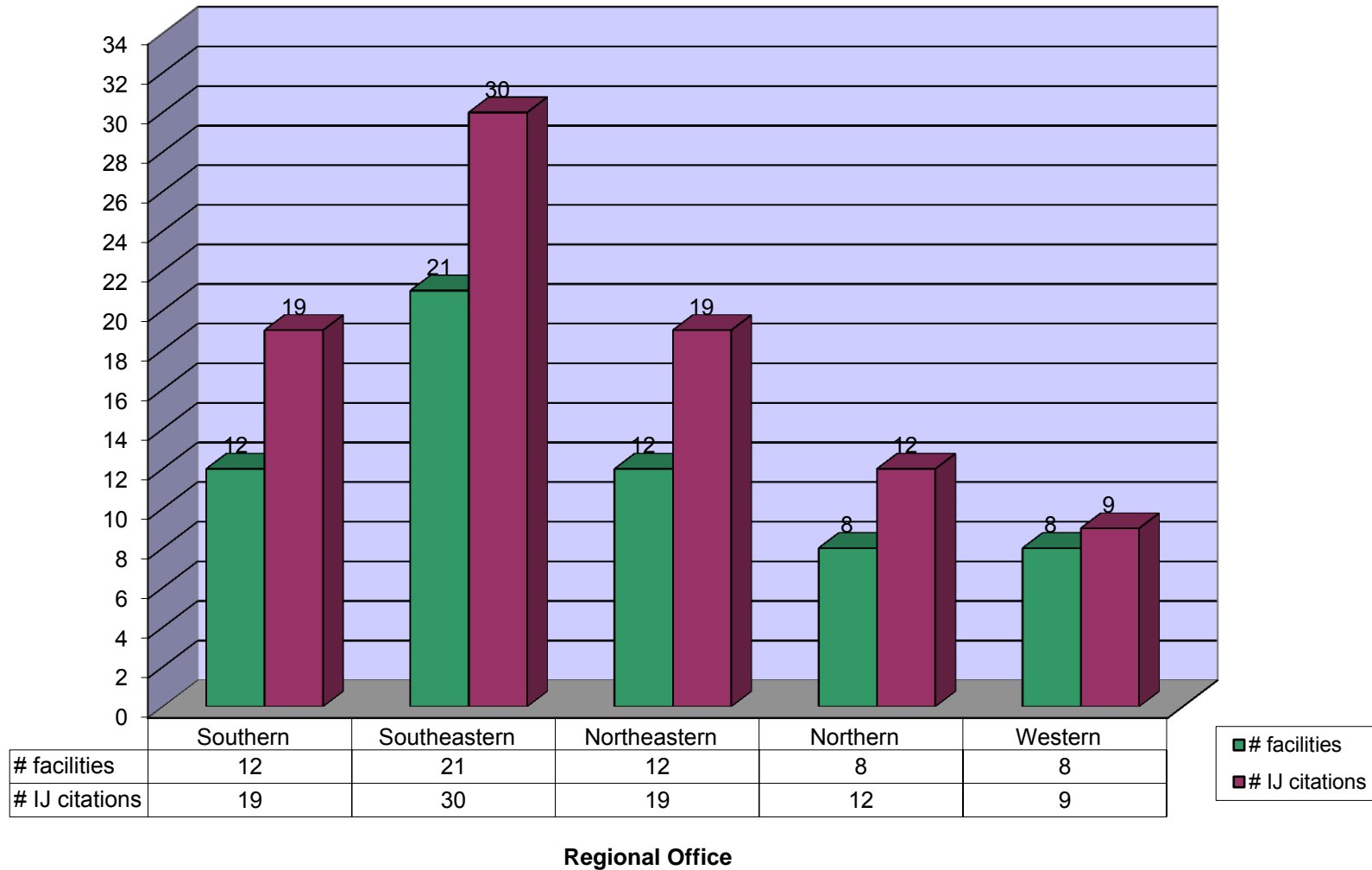
Immediate Jeopardy Citations by Regional Office 2008



| | Southern | Southeastern | Northeastern | Northern | Western |
|----------------|----------|--------------|--------------|----------|---------|
| # facilities | 10 | 12 | 13 | 5 | 5 |
| # IJ citations | 15 | 24 | 22 | 6 | 9 |

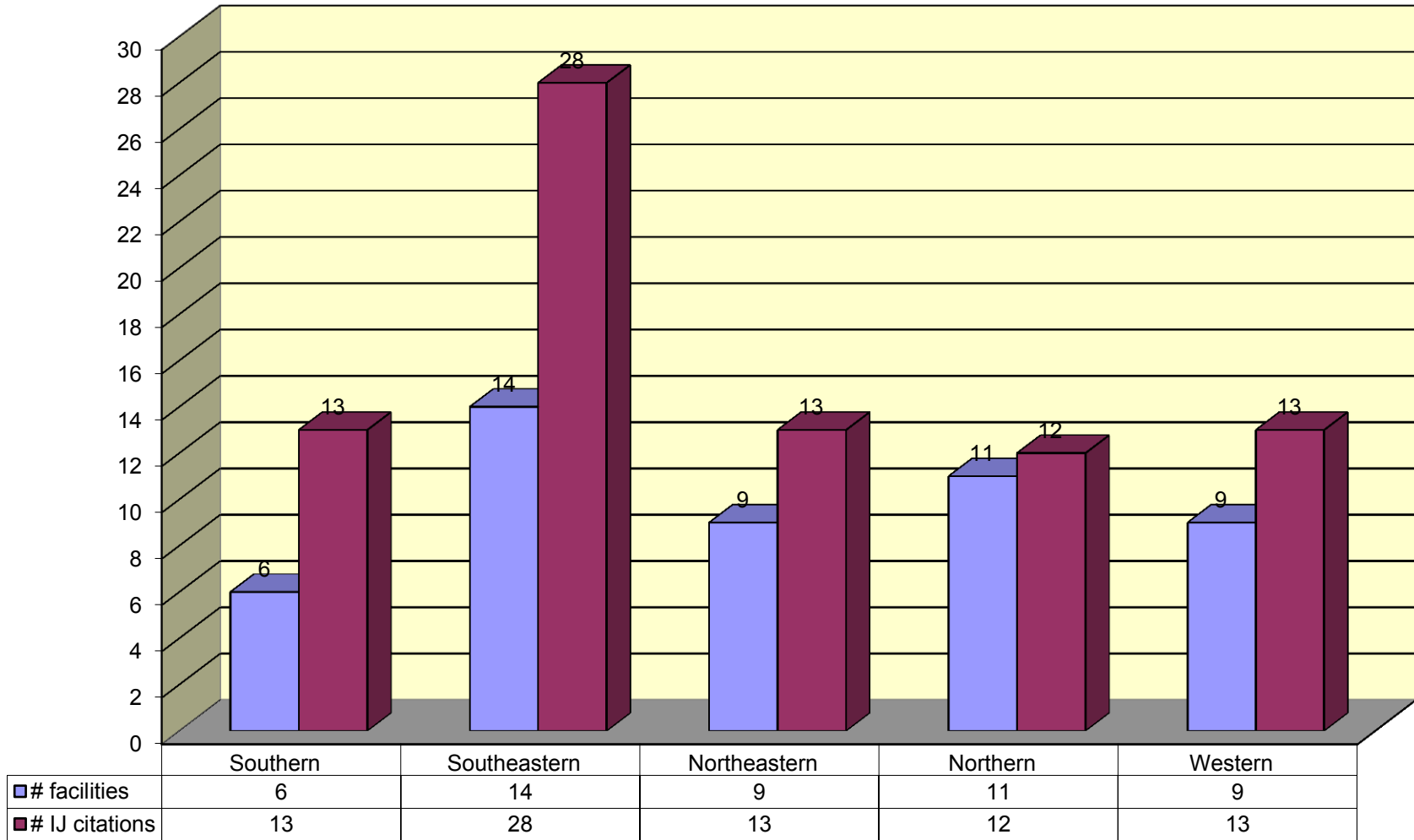


Immediate Jeopardy Citations by Regional Office 2009





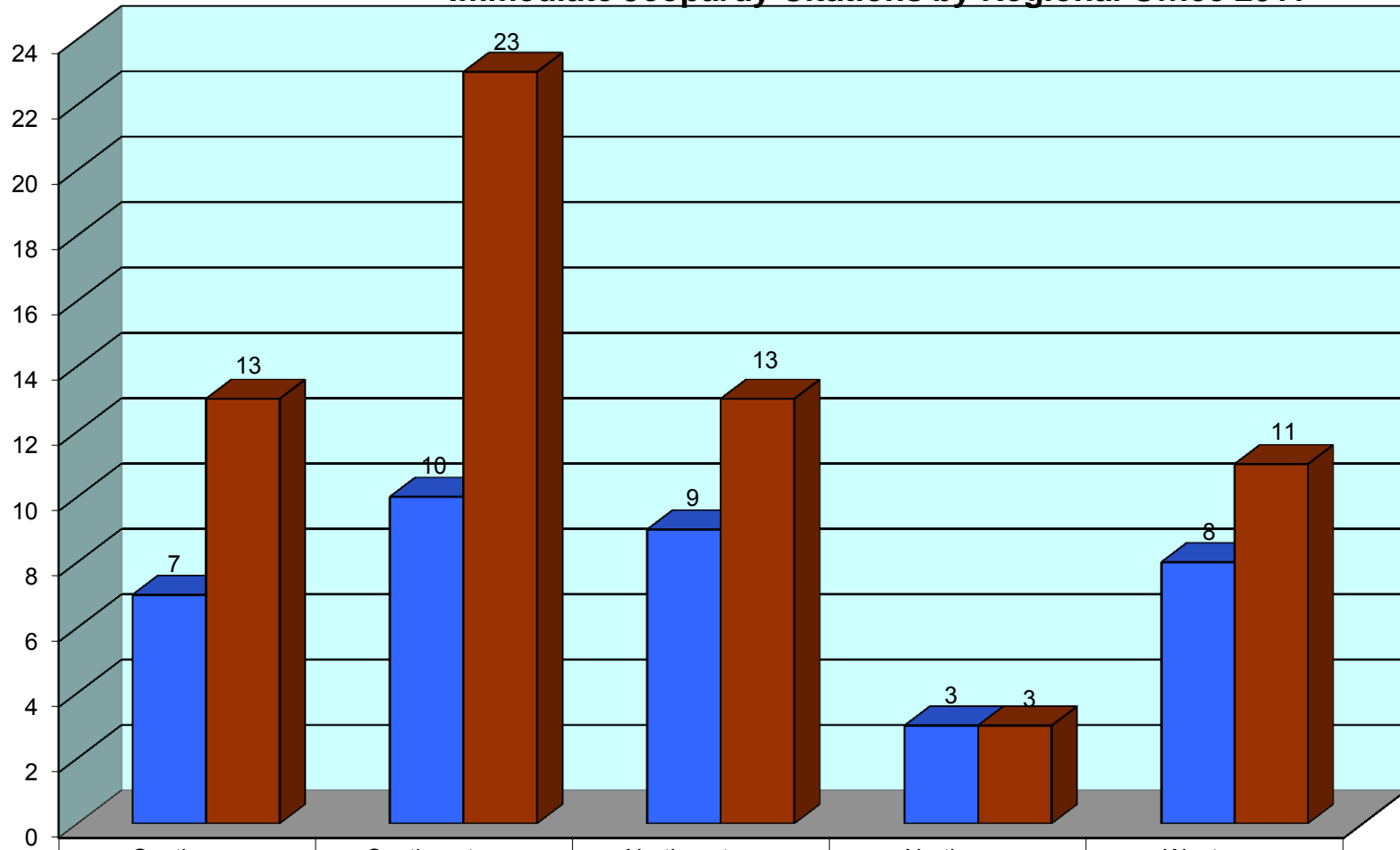
Immediate Jeopardy Citations by Regional Office 2010



facilities # IJ citations



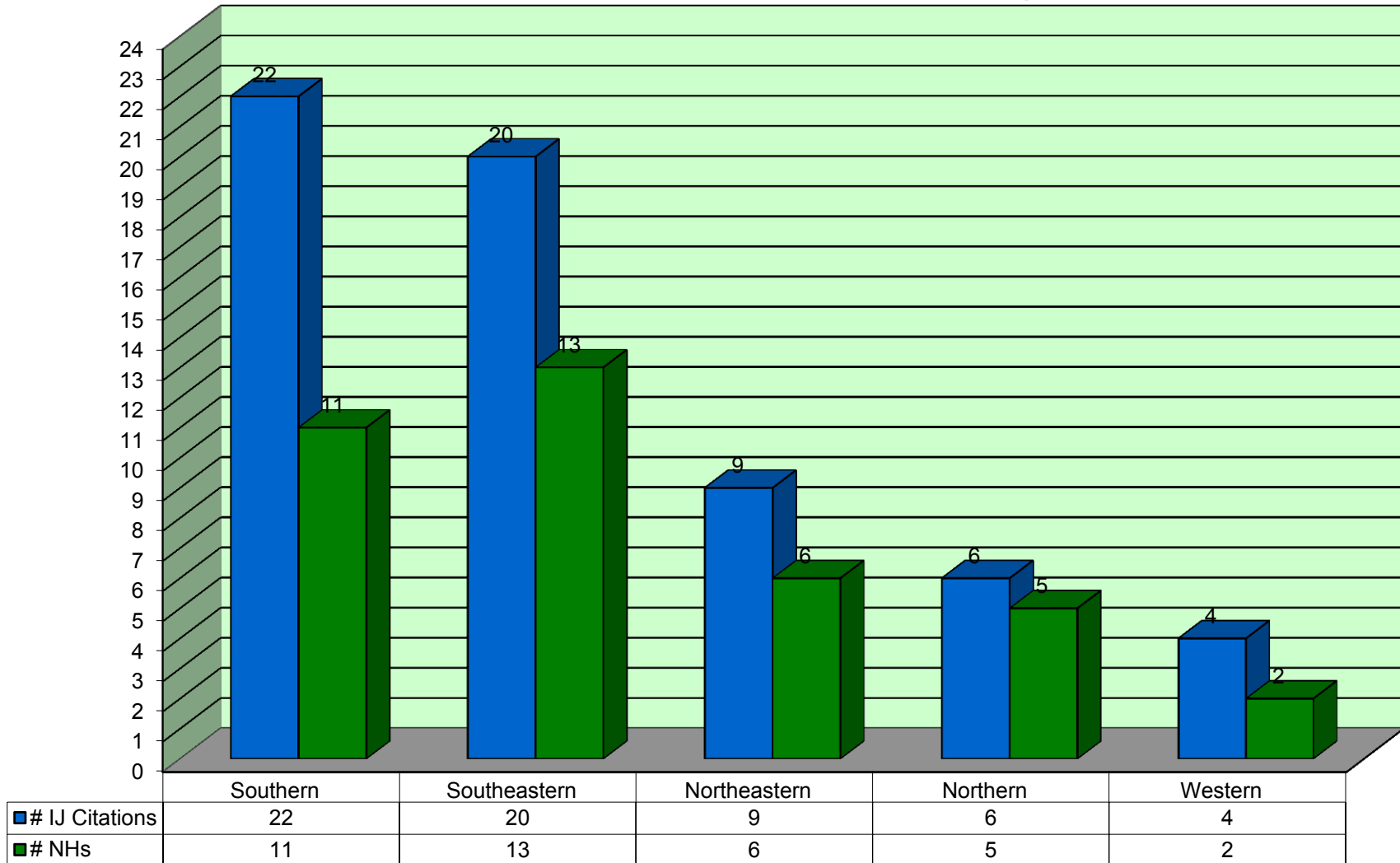
Immediate Jeopardy Citations by Regional Office 2011



| | Southern | Southeastern | Northeastern | Northern | Western |
|----------------|----------|--------------|--------------|----------|---------|
| # facilities | 7 | 10 | 9 | 3 | 8 |
| # IJ citations | 13 | 23 | 13 | 3 | 11 |

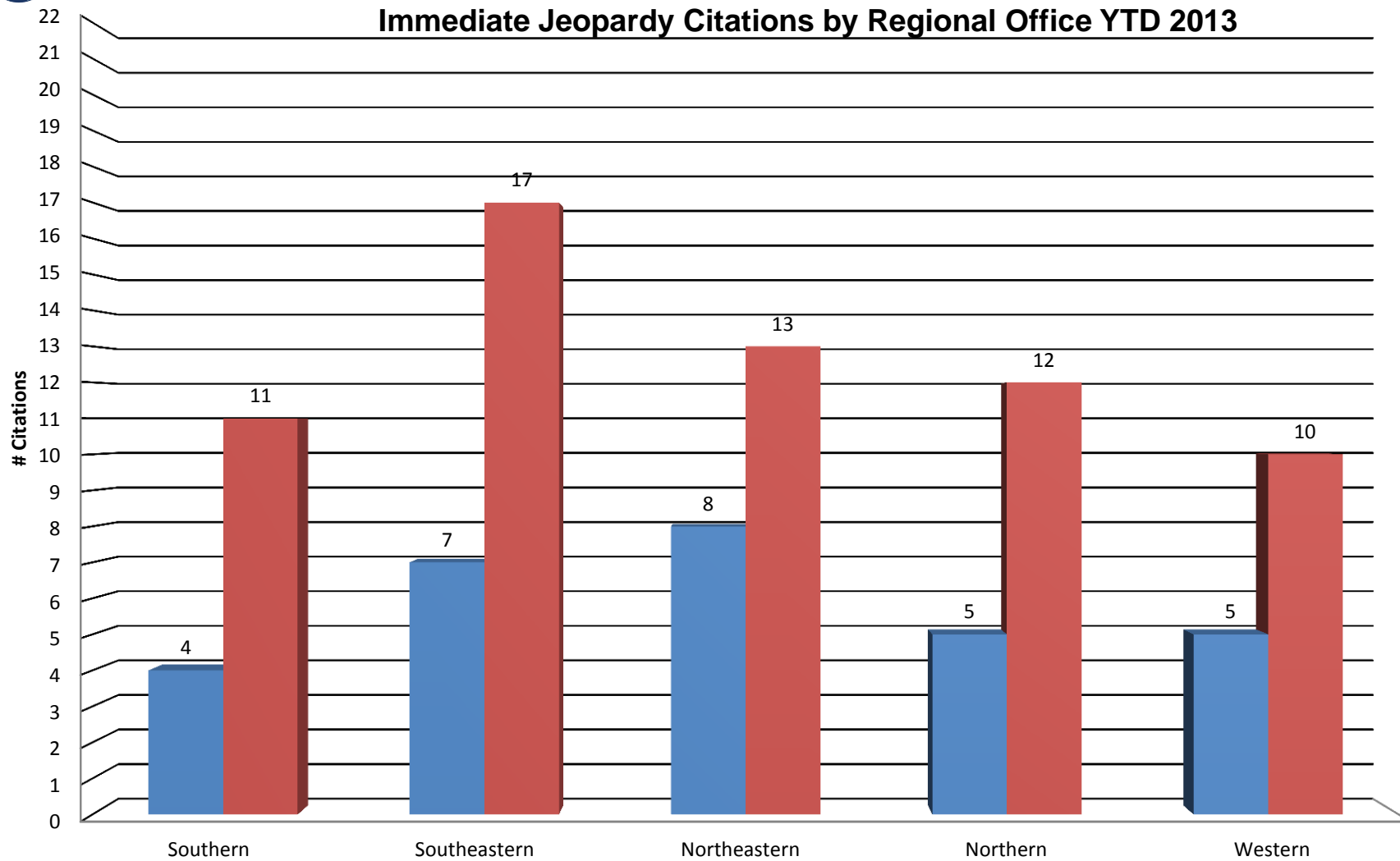


Immediate Jeopardy Citations by Regional Office 2012





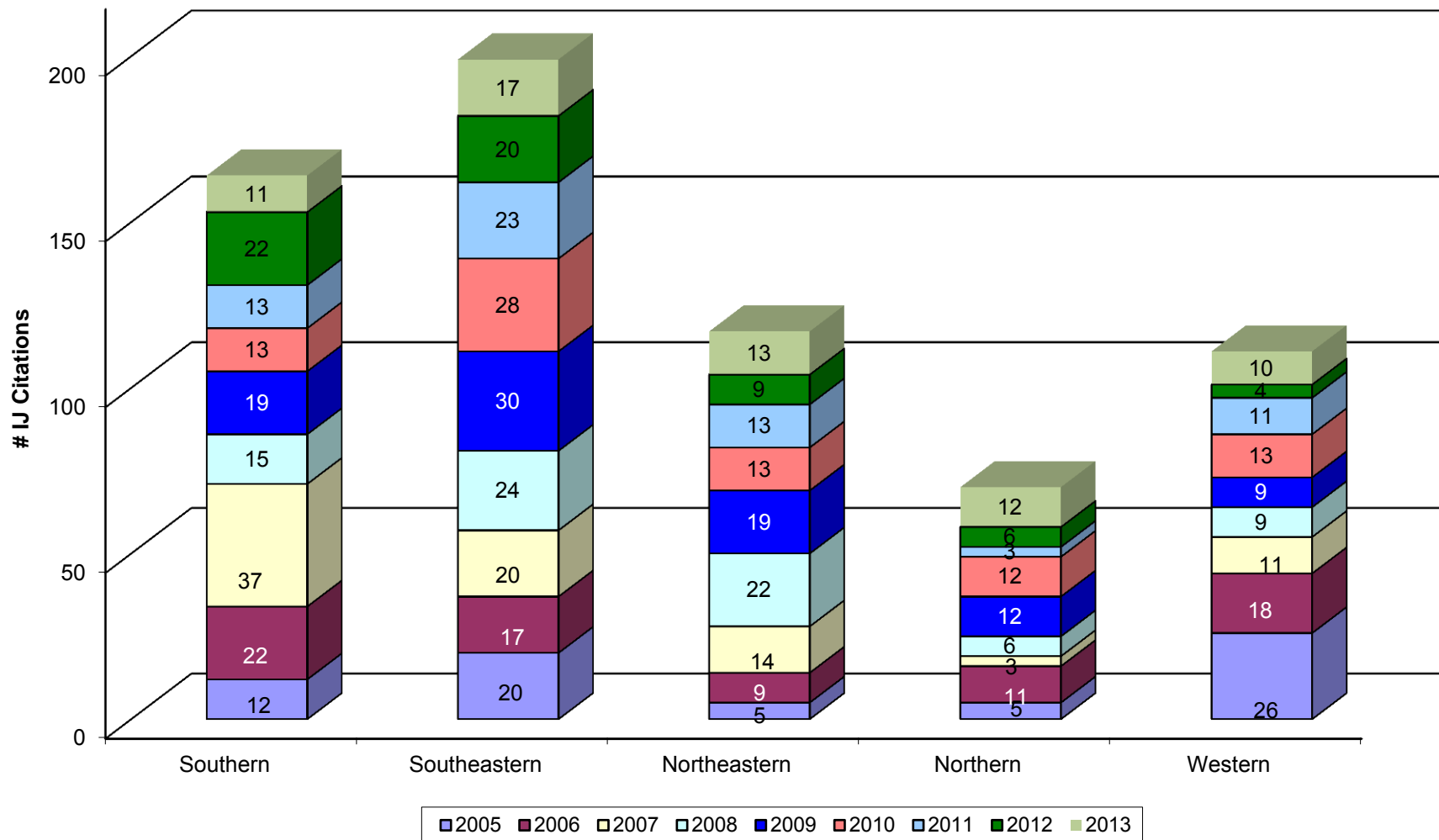
Immediate Jeopardy Citations by Regional Office YTD 2013



| | Southern | Southeastern | Northeastern | Northern | Western |
|----------------|----------|--------------|--------------|----------|---------|
| # facilities | 4 | 7 | 8 | 5 | 5 |
| # IJ citations | 11 | 17 | 13 | 12 | 10 |



Trends in Immediate Jeopardy Citations by Region 2005 - YTD 2013





Federal Tags Cited at the Level of Immediate Jeopardy 2005 thru YTD 2013

