



# **Wisconsin Coalition for Collaborative Excellence in Assisted Living (WCCEAL)**

Update 2012



# Introduction and History



# Events so far .....

- Approval from DHS Secretary
- Met with Associations and Advocates
- Developed Guiding Values
- Partnership with U.W. Madison/CHSRA for a research component
- Updated DQA database to recognize this new group
- Approved first group – WAHSA!
- CHSRA/DQA received \$200,000 grant!
- All four association's programs approved

# Next Steps .....

- Meet with the Coalition to further develop and refine what we want to accomplish
- CHSRA use of grant to:
  - Develop a satisfaction survey
  - Develop performance measures (data collection system)
  - Study the effective of the collaborative
  - Publish articles
- Communities implement comprehensive QA & QI with help of associations
- Evaluate effectiveness
- Submit for additional grants (sustainability)

# What should we collect?



# QI and QA

- Facility Information
- Resident Information
- Measures
  - QI Structure and Process
  - QI Outcomes
  - QI Improvement Satisfaction

How could this work, and what could you expect to get back?



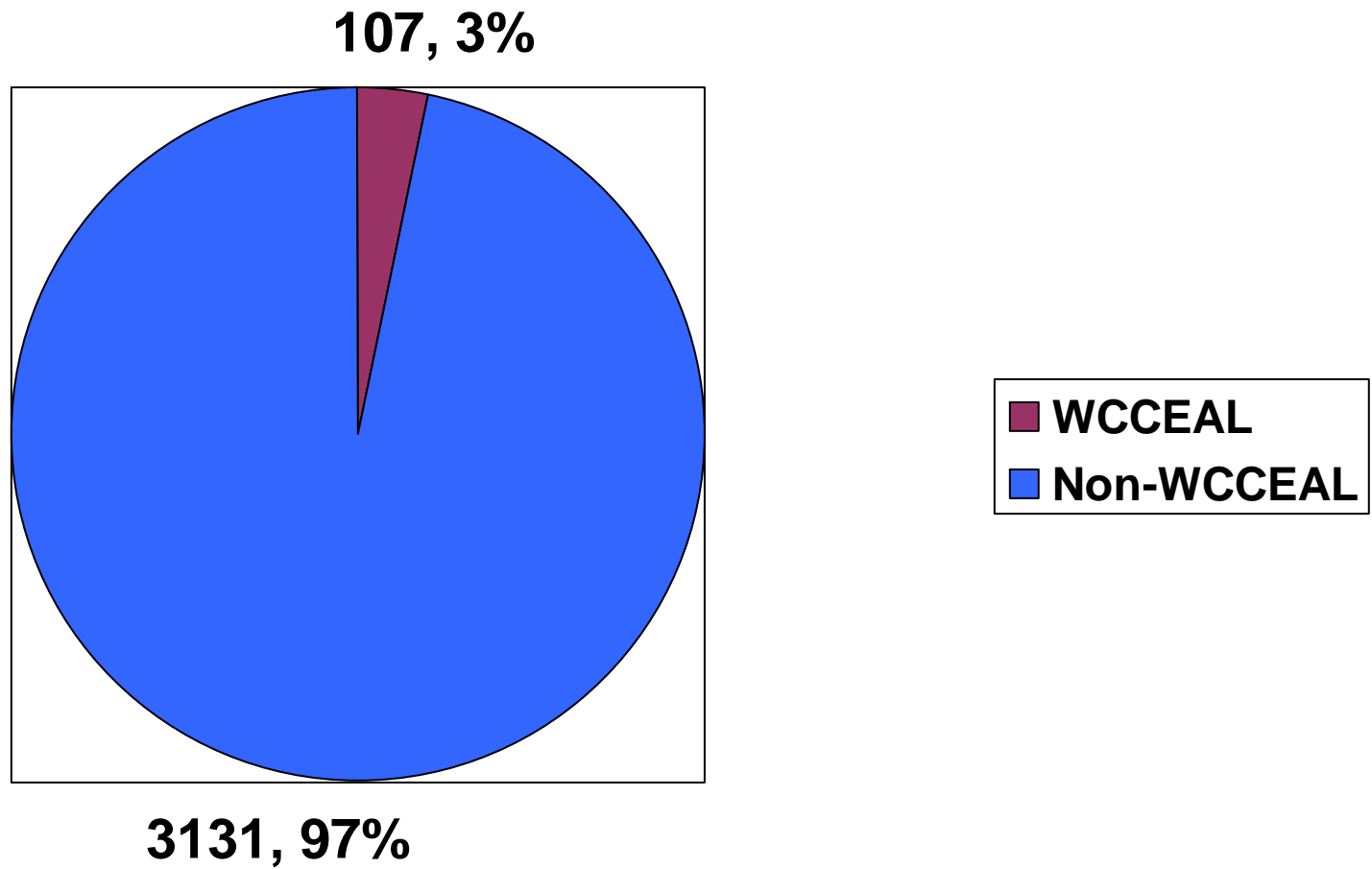




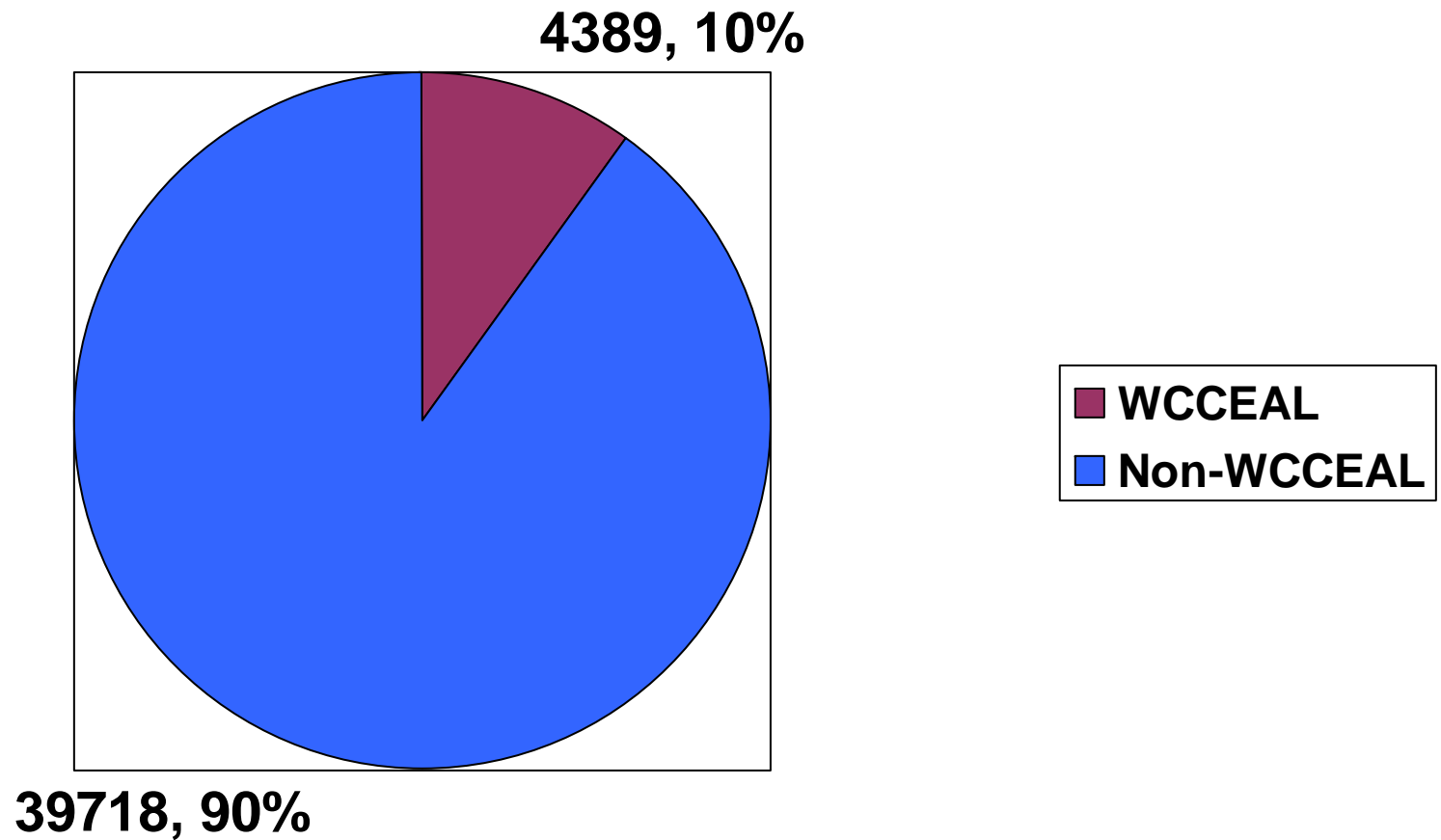
# **“State of Assisted Living”**

WCCEAL vs. Non-WCCEAL  
Calendar Year 2011

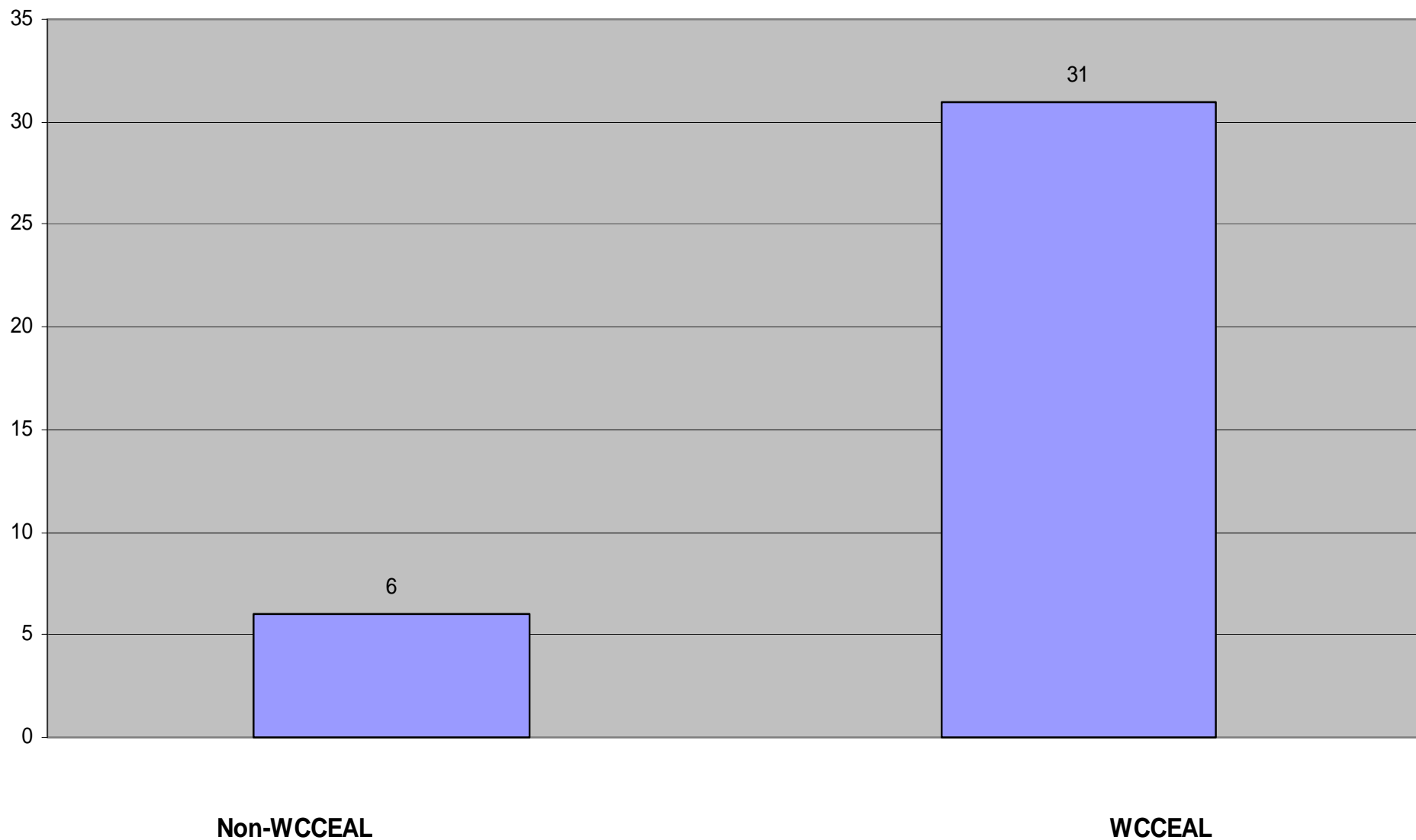
# # of Communities



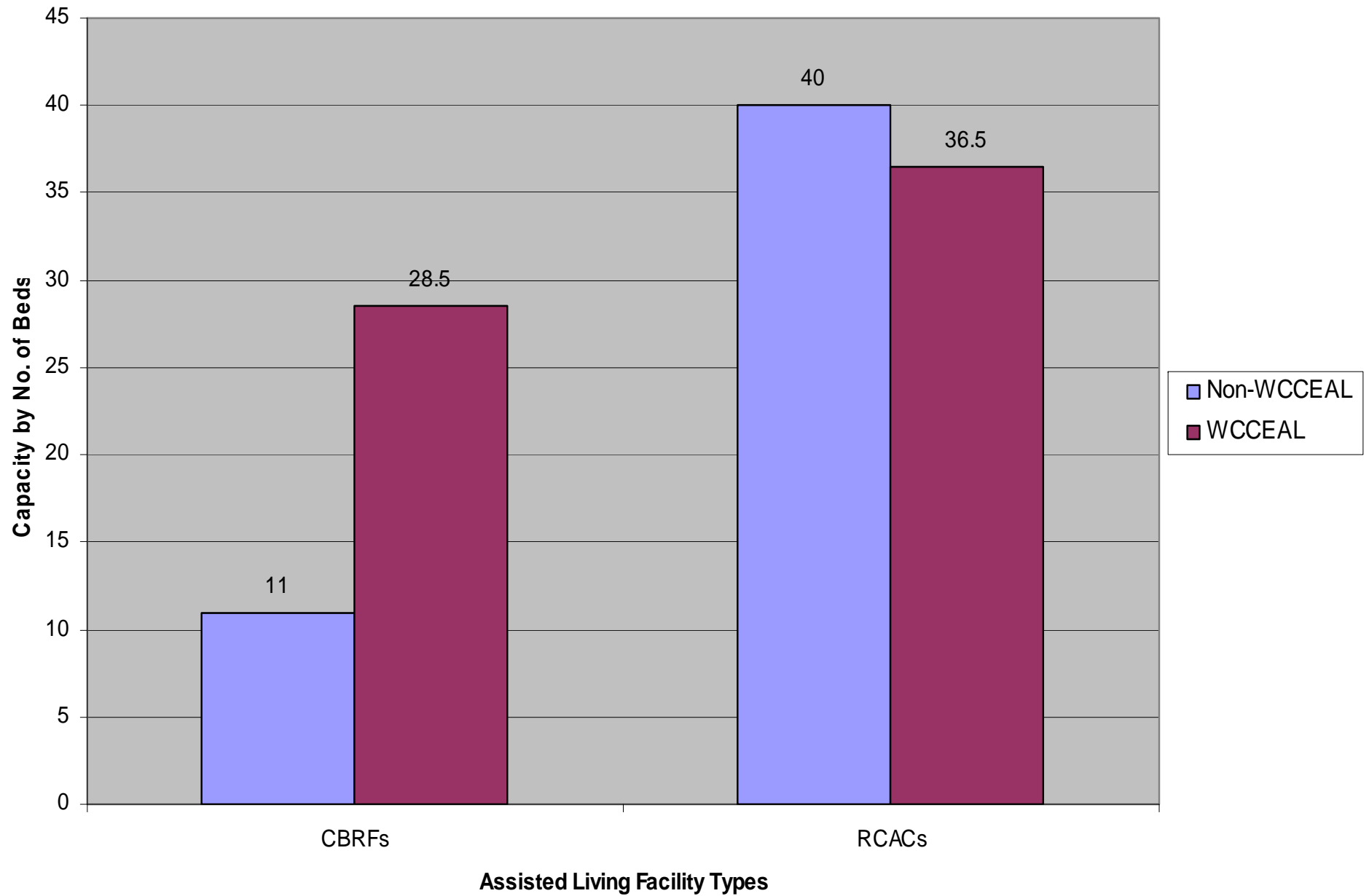
# # of Beds/Apts



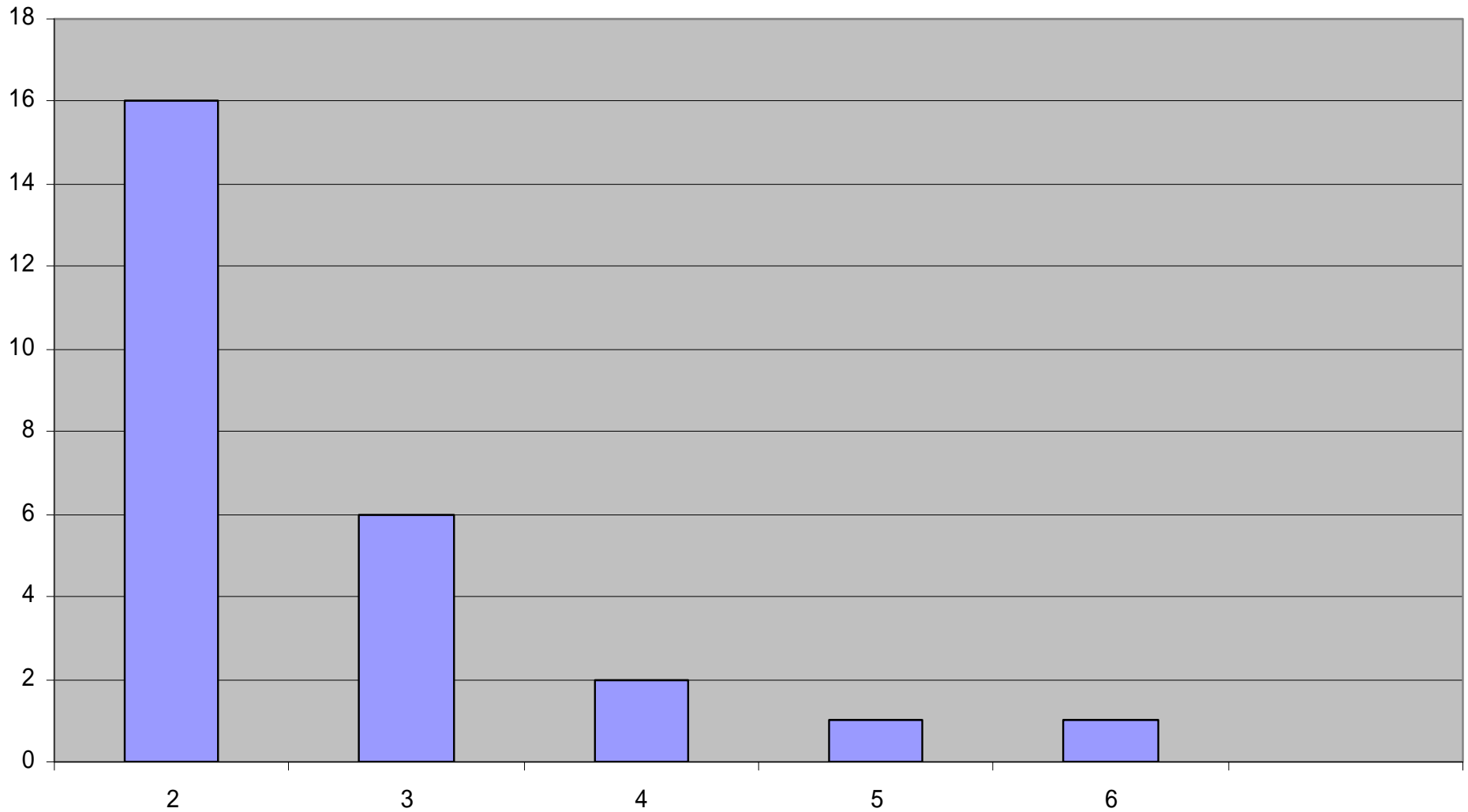
**WCCEAL AND Non-WCCEAL AL FACILITIES ON DECEMBER 31, 2011: MEDIAN CAPACITY IN BEDS**



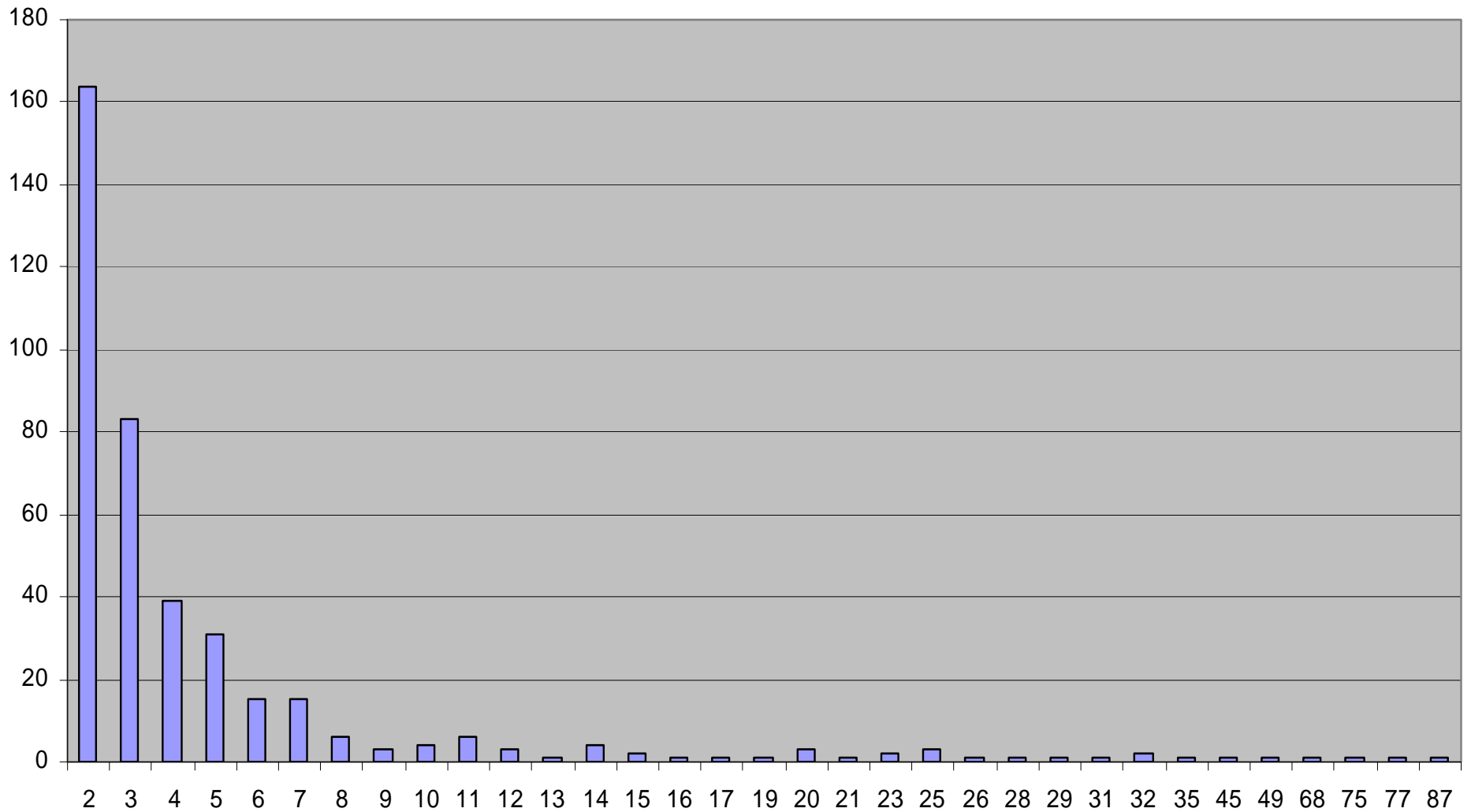
Median Capacity by Number of Beds on Dec. 31, 2011: Comparison Limited to RCACs and CBRFs



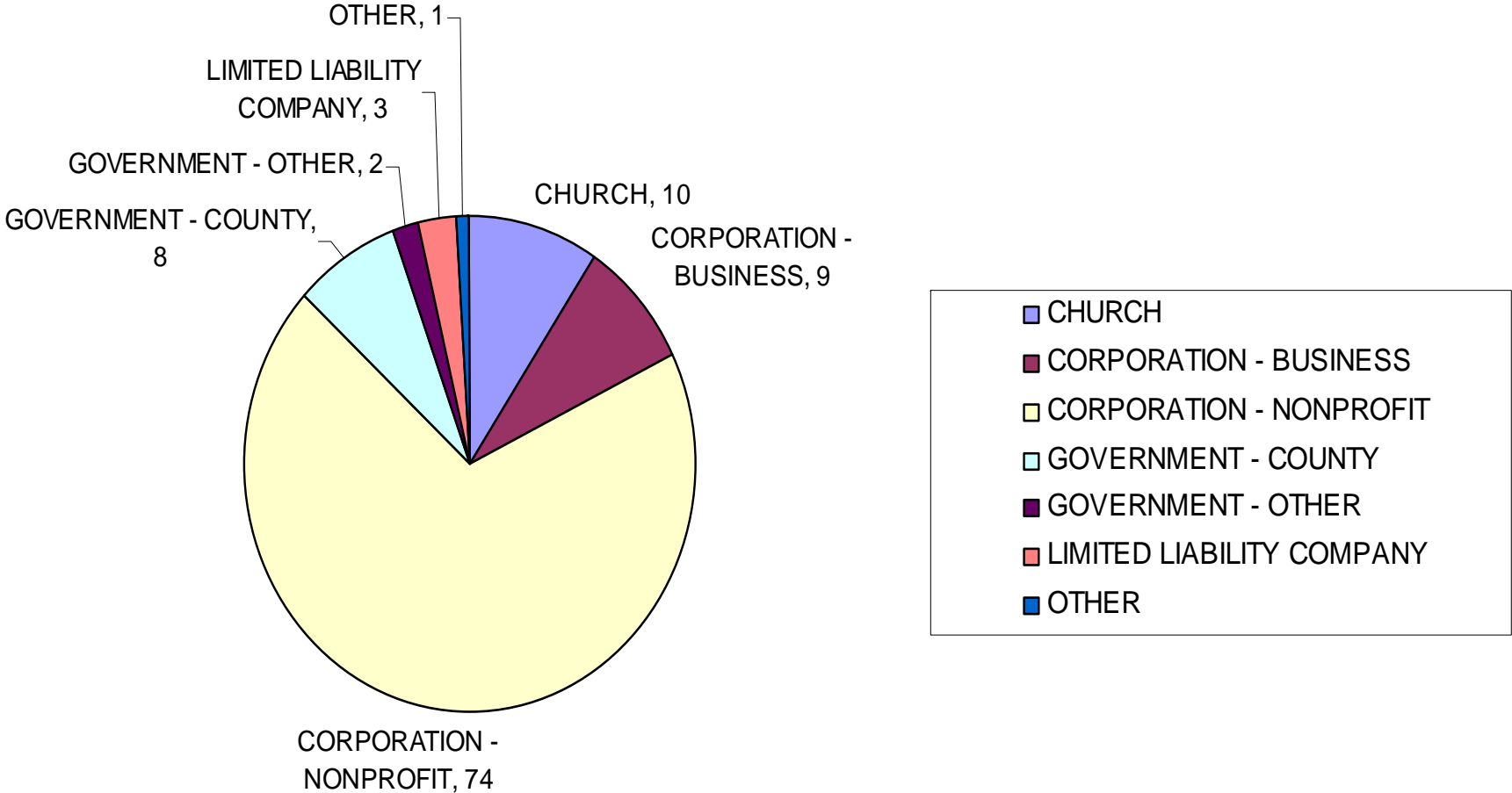
**WCCEAL Assisted Living Facilities: 60 Non-Independent Facilities**  
**26 Affiliates with WCCEAL Facilities**  
**47 Independent WCCEAL Facilities**  
**(54 Facilities affiliated with WAHSA Facilities but not in WCCEAL Collaborative)**



**Non-WCCEAL Assisted Living Facilities: 2267 Non-Independent Facilities  
401 Affiliates  
965 Independent Facilities  
(29 Affiliates that had both WAHSA and Non-WCCEAL facilities were excluded to avoid  
double-counting)**

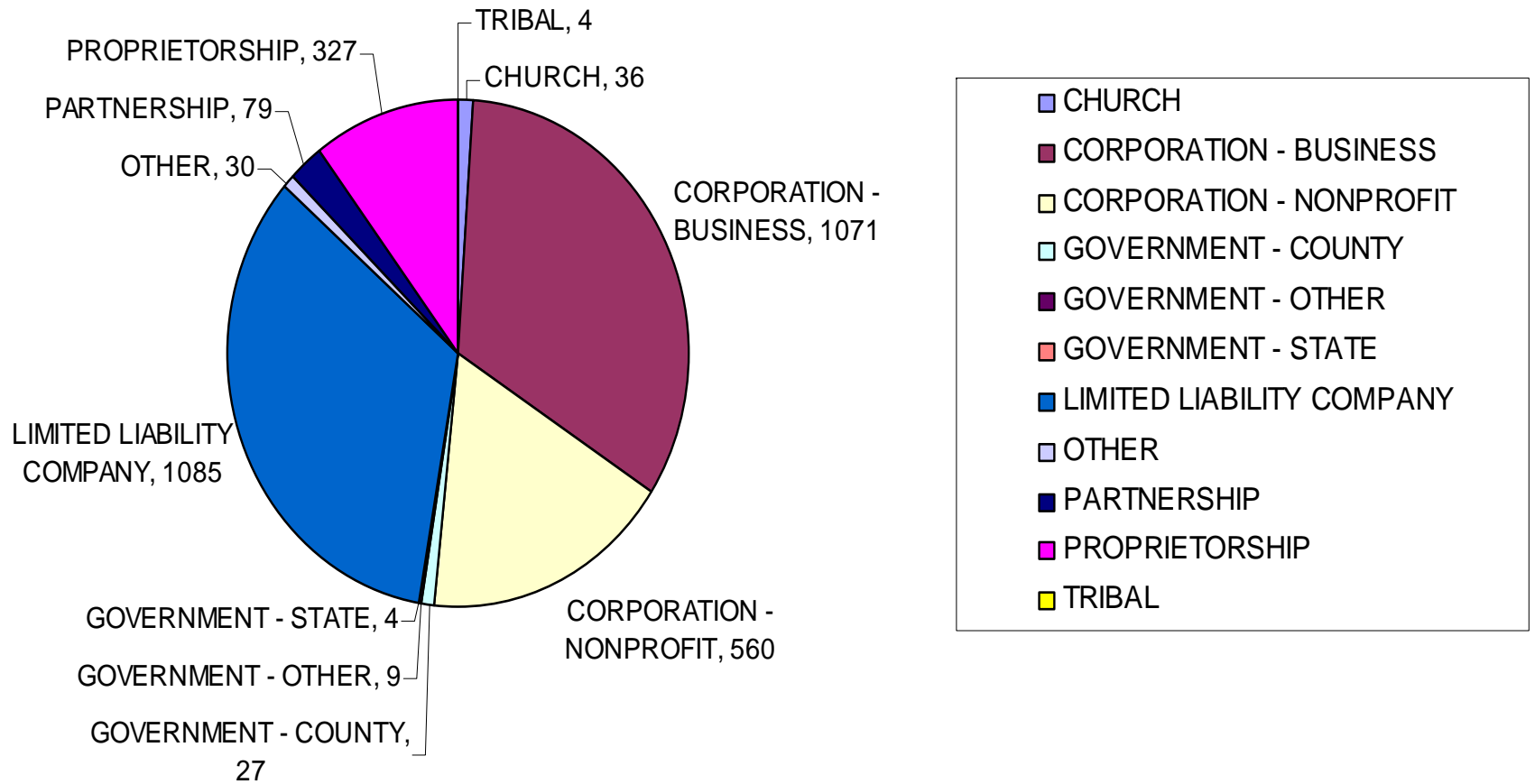


**WCCEAL AL Facilities -- Ownership by Count on December 31, 2011**

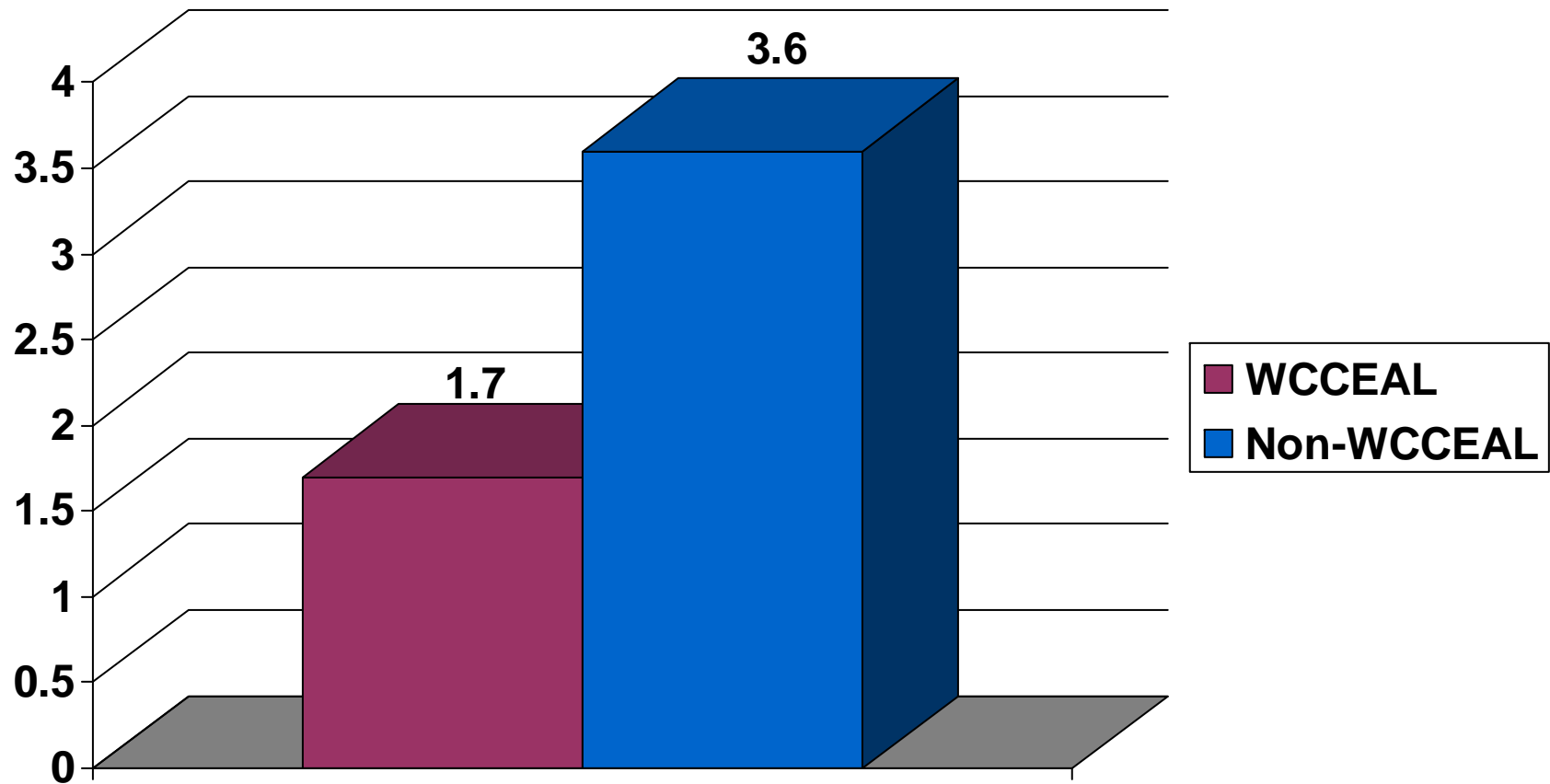




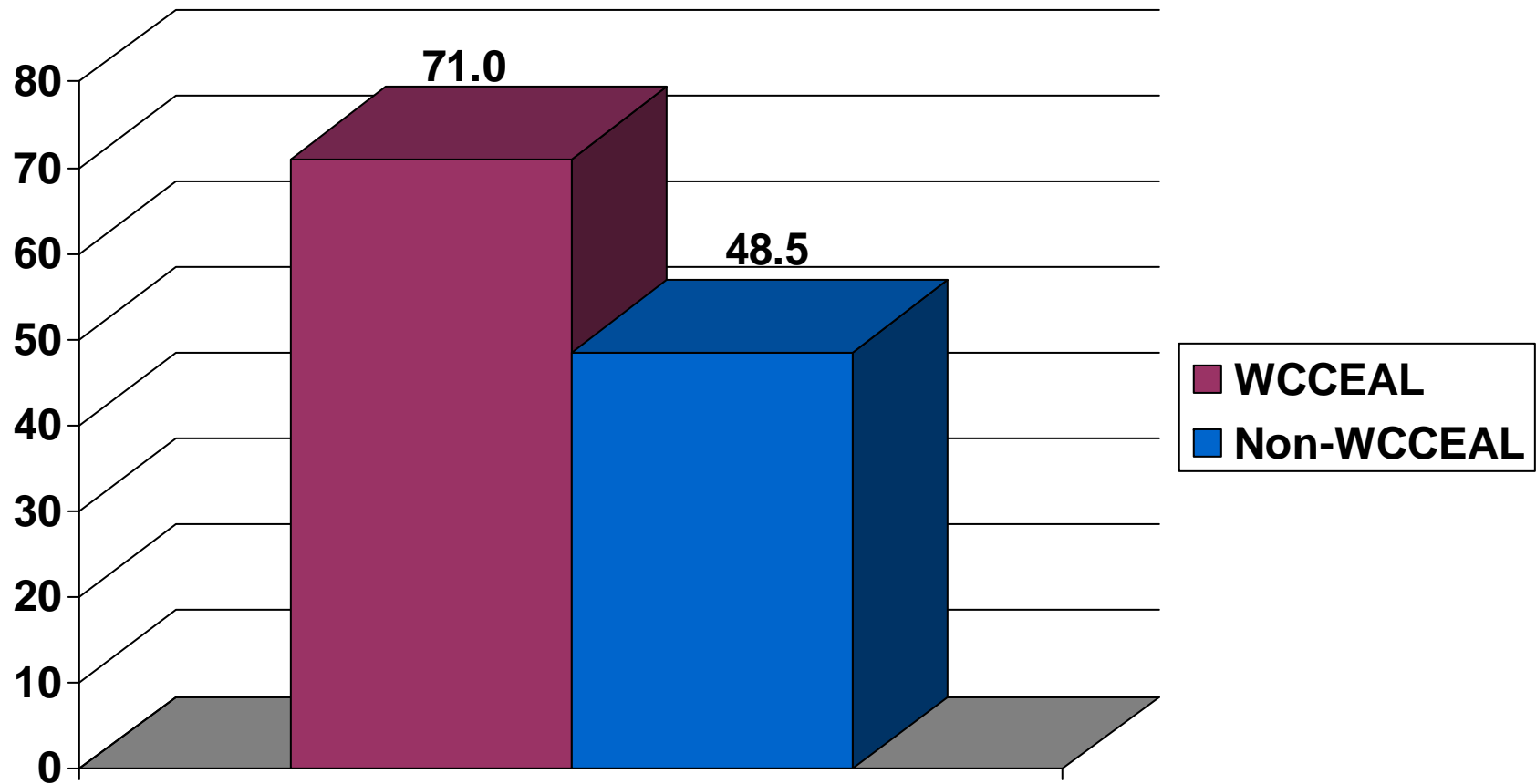
### Non-WCCEAL AL Facilities: Ownership by Count on December 31, 2011



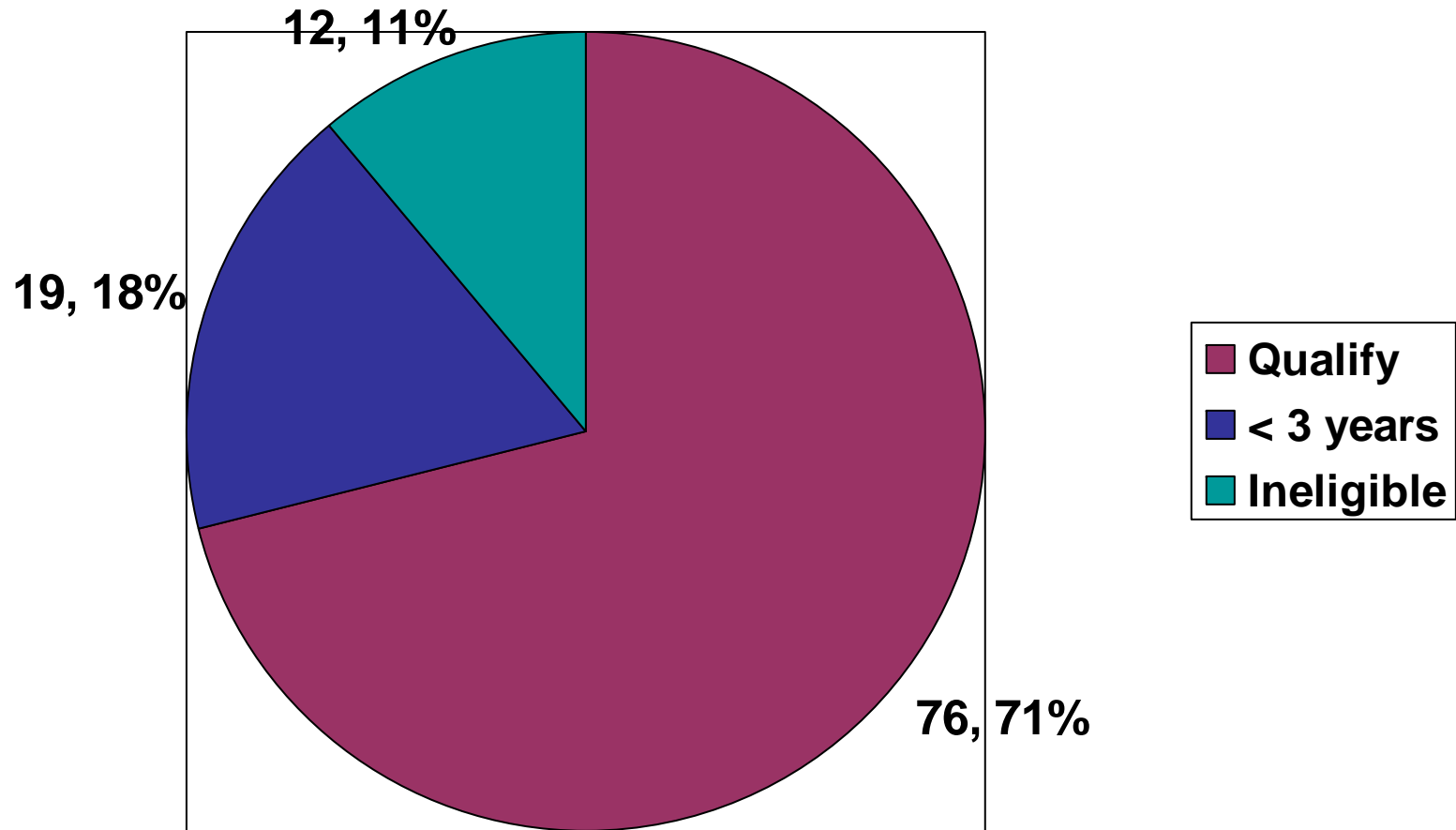
# Avg. Citation per Survey



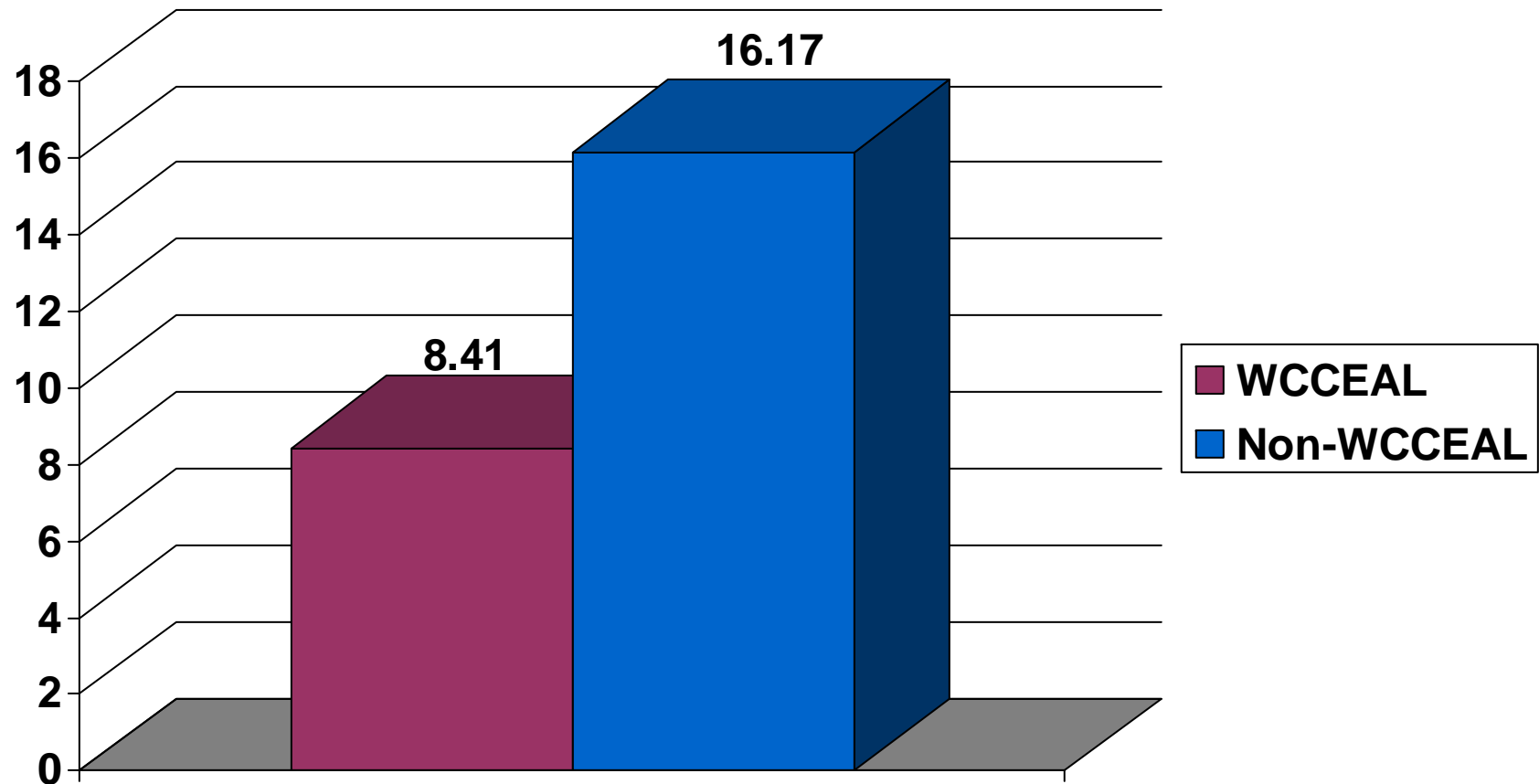
# Qualifying for Abbreviated



# WCCEAL – Abbreviated Survey Qualification

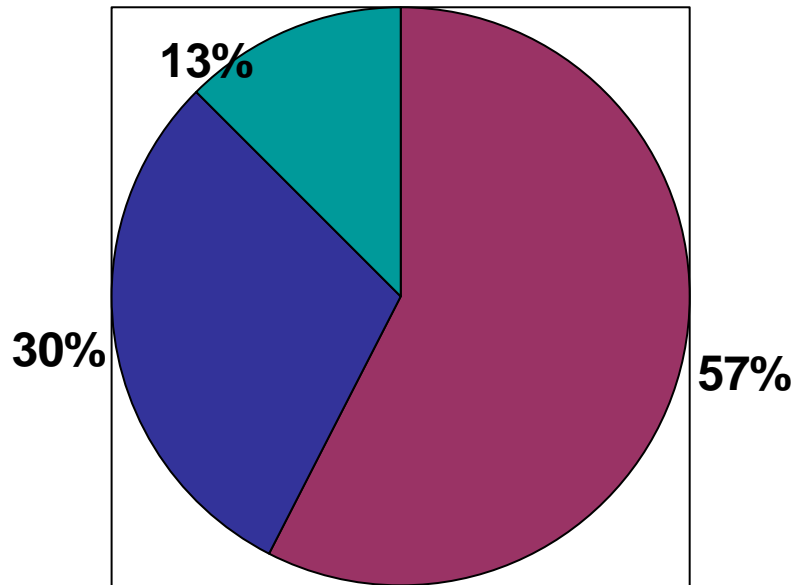


# % making up 100% of Complaints



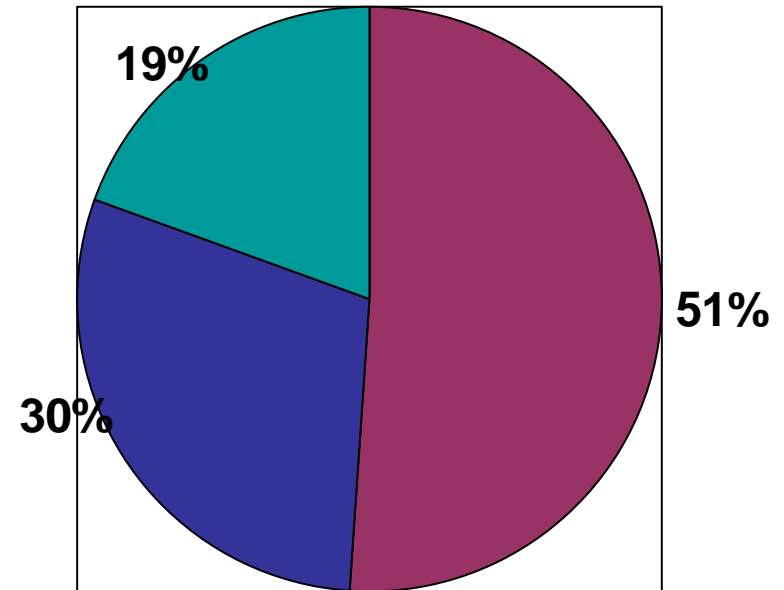
# Results of Surveys Conducted

**WCCEAL**



■ No SOD ■ SOD ■ Enforcement

**Non-WCCEAL**



■ No SOD ■ SOD ■ Enforcement

What if two years from now .....



