

**Division of Quality Assurance
Bureau of Nursing Home Resident Care**

**Changes in
Demographics of
Nursing Home Residents
1996 – 2023**

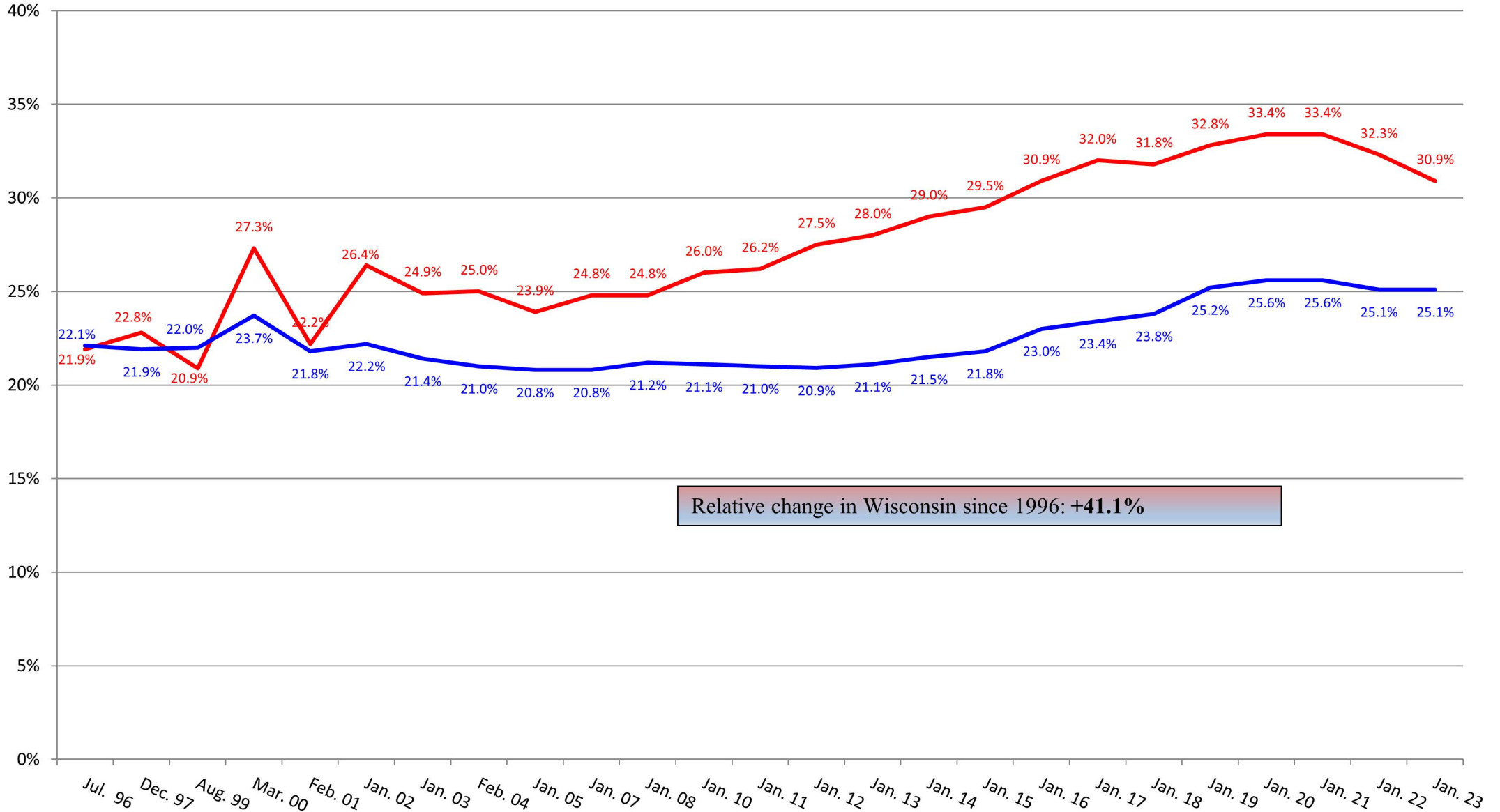
CASPER 4 Data

Prepared by Sonja Murray



Percentage of Residents Not on T18 or T19

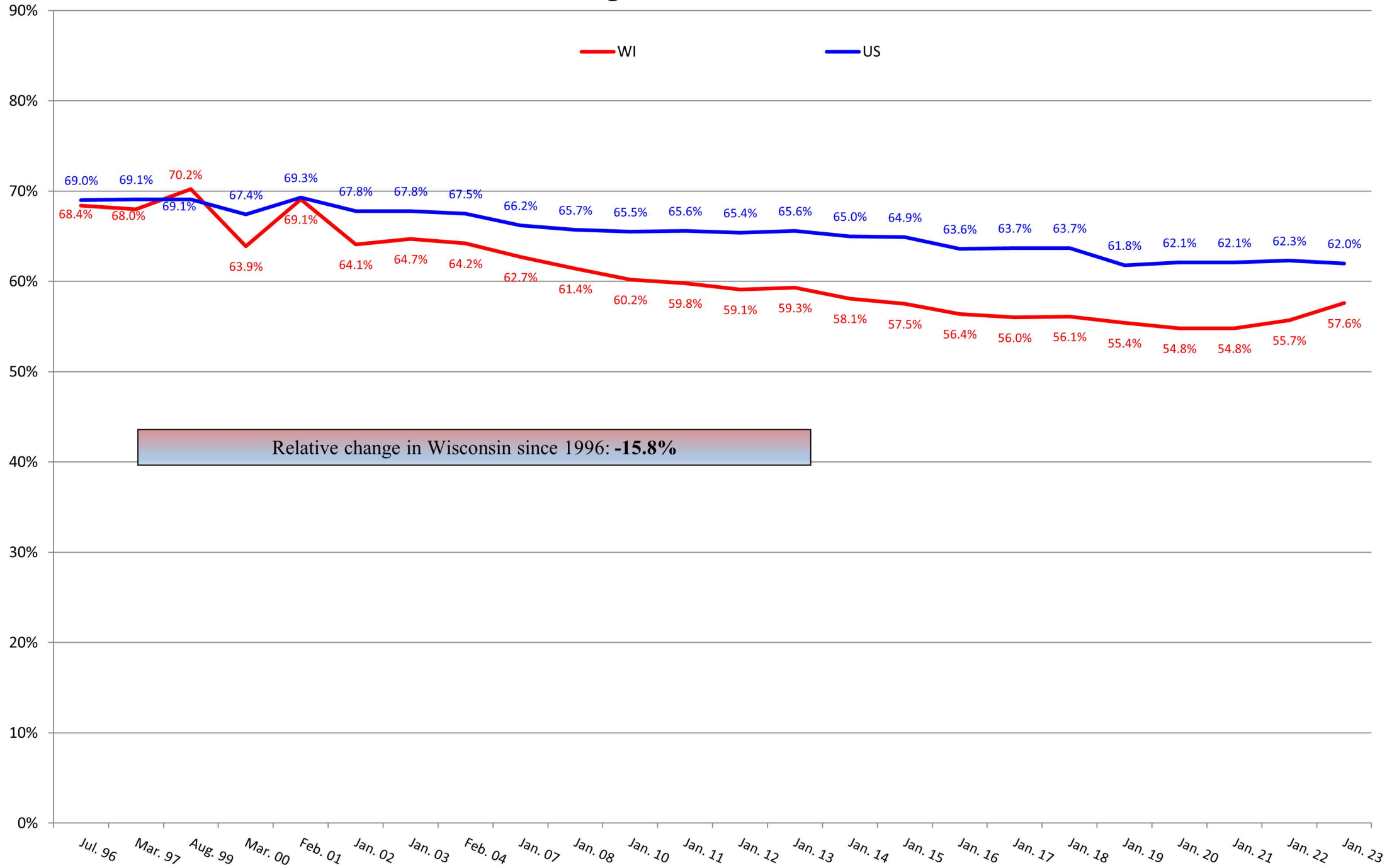
WI US



Relative change in Wisconsin since 1996: **+41.1%**



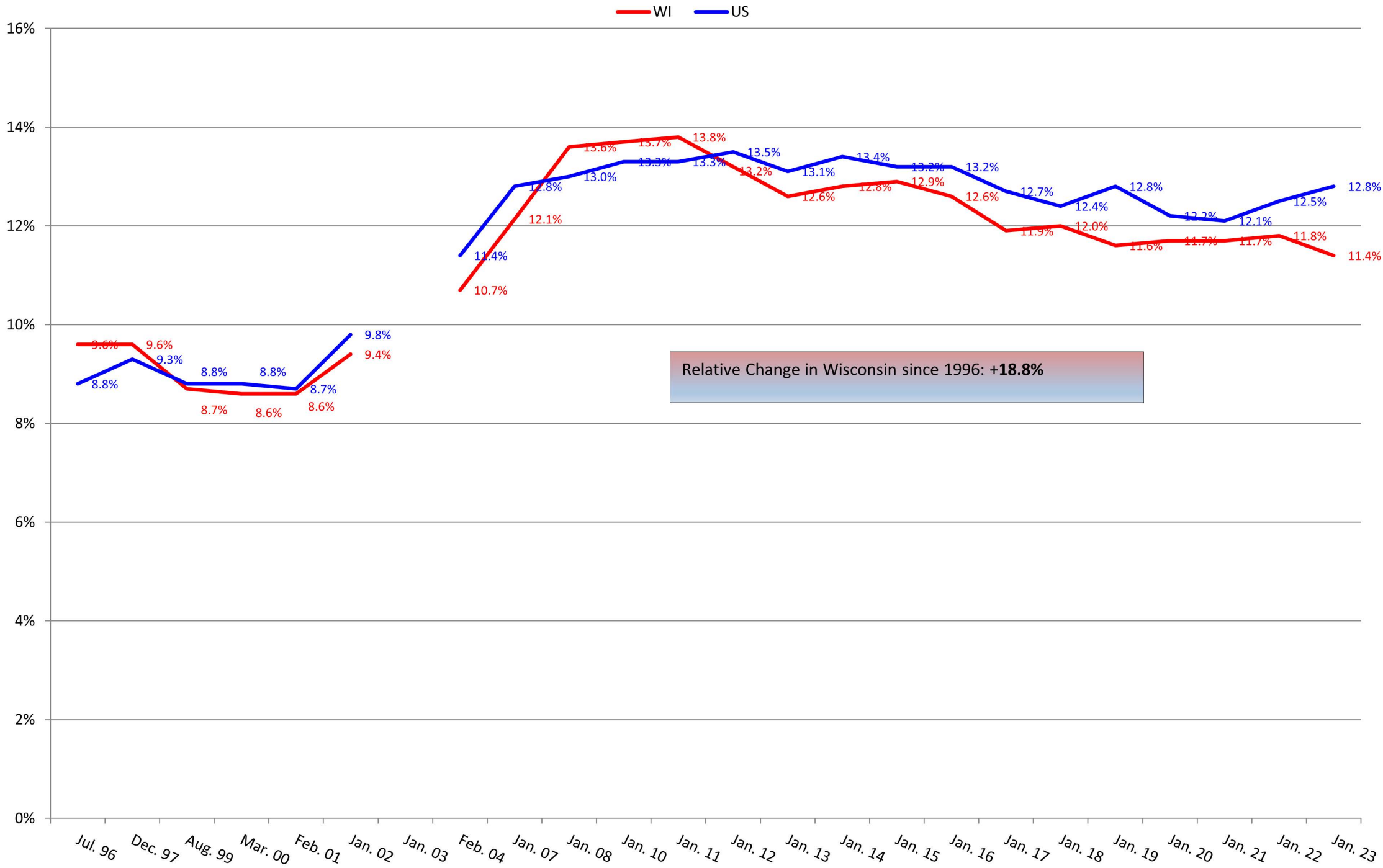
Percentage of Residents on Medicaid



Relative change in Wisconsin since 1996: **-15.8%**

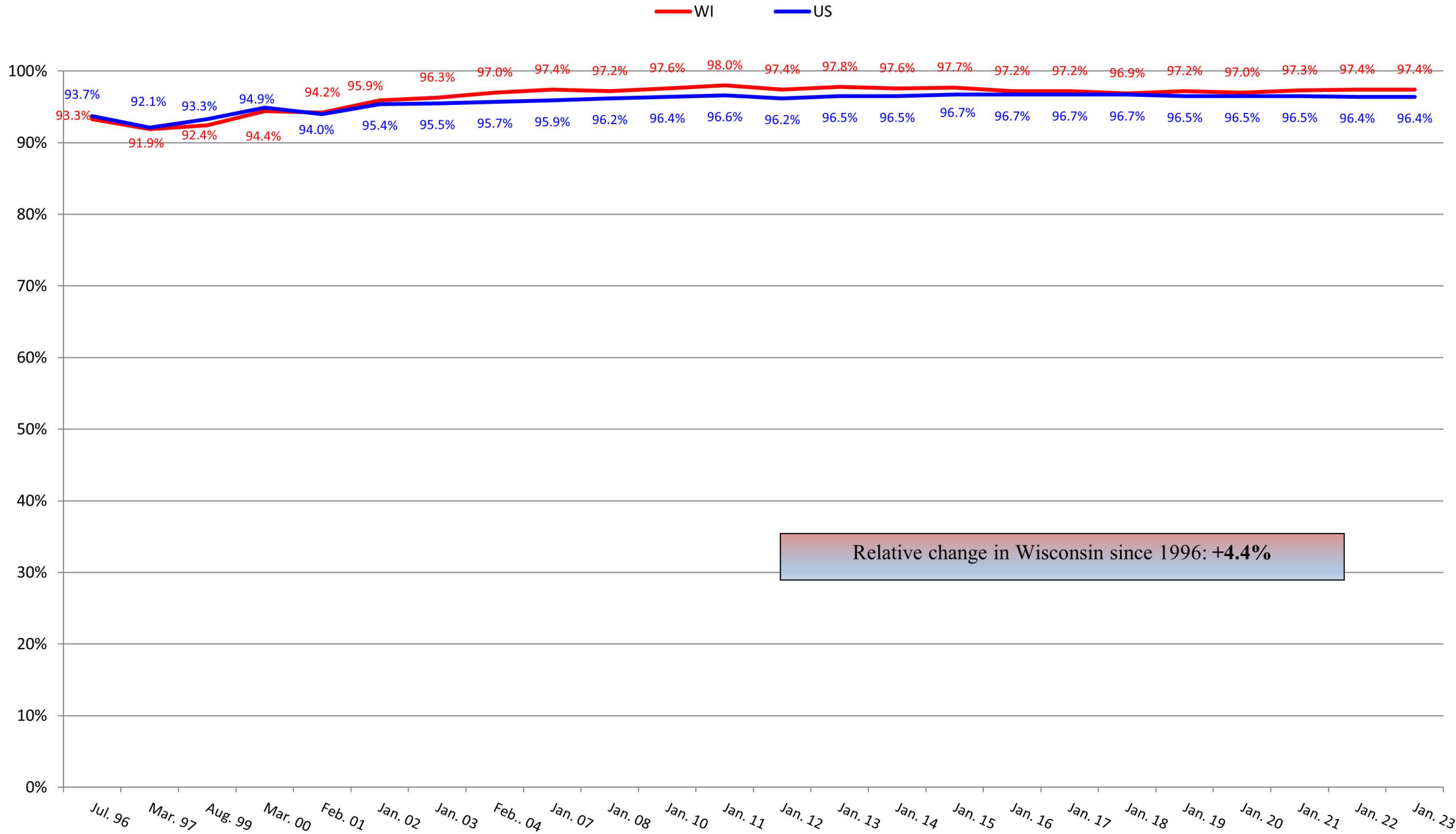


Percentage of Residents on Medicare



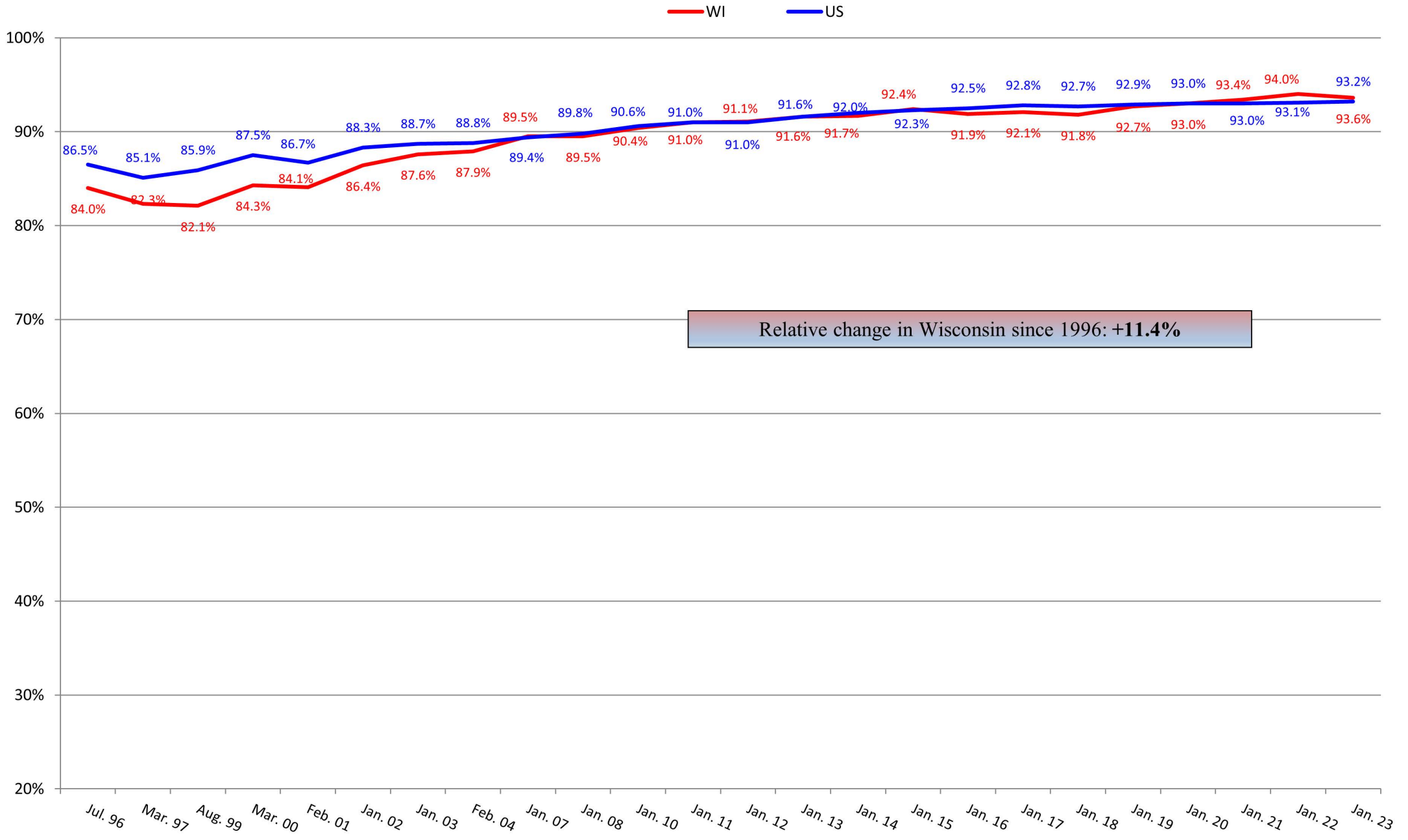


Percentage of Residents Dependent on or Requiring Assistance with Bathing





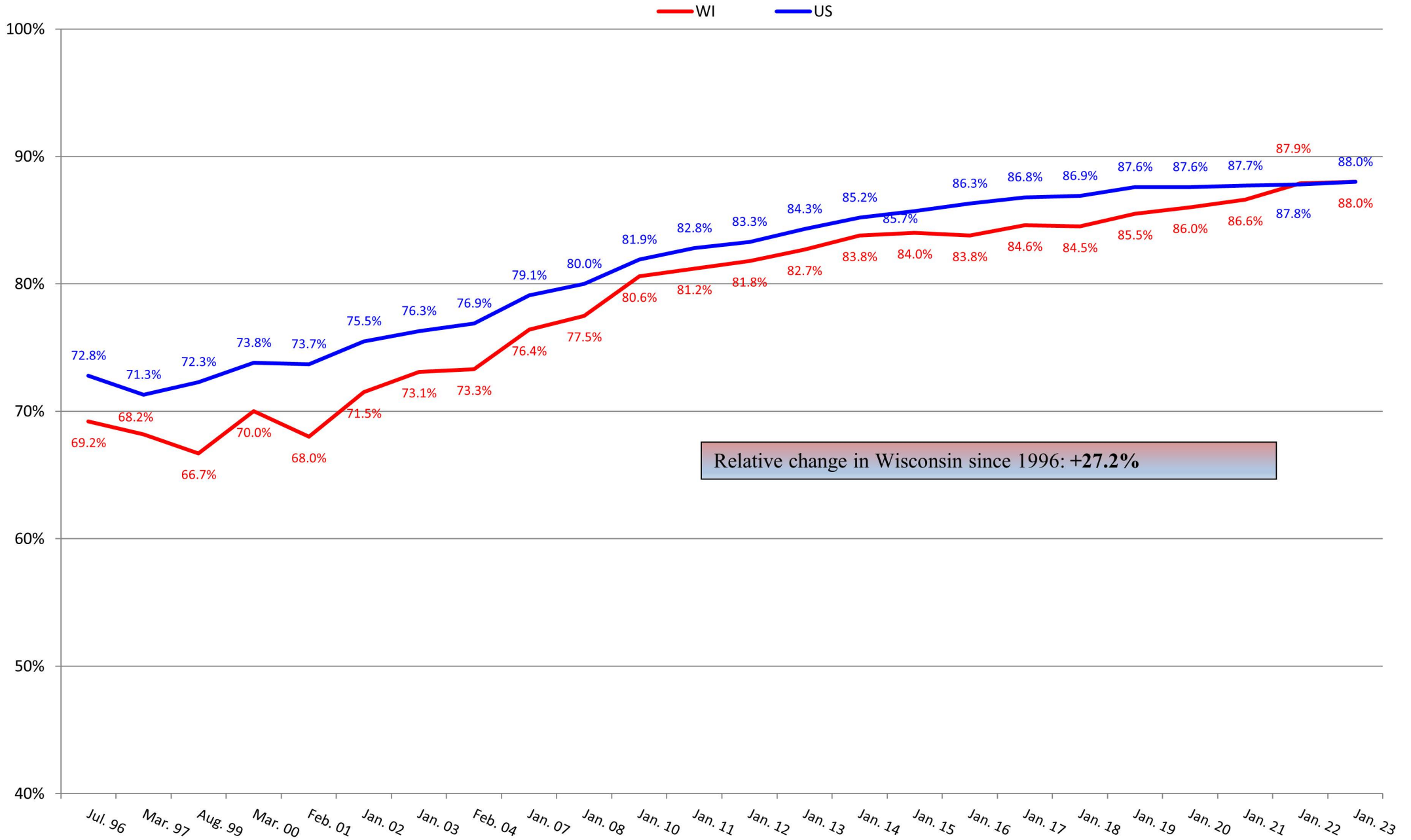
Percentage of Residents Dependent on or Requiring Assistance with Dressing



Relative change in Wisconsin since 1996: **+11.4%**

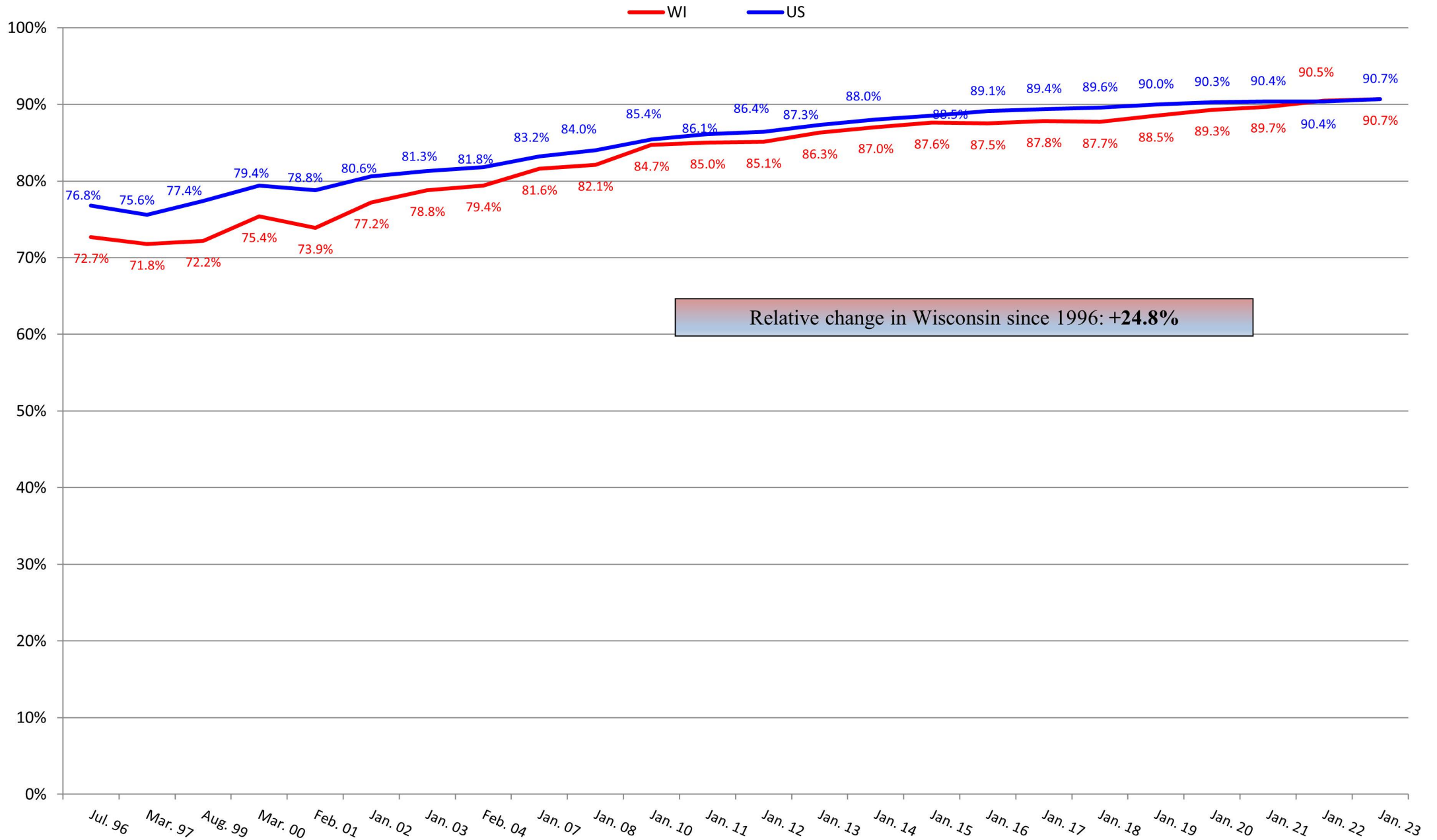


Percentage of Residents Dependent on or Requiring Assistance with Transfers



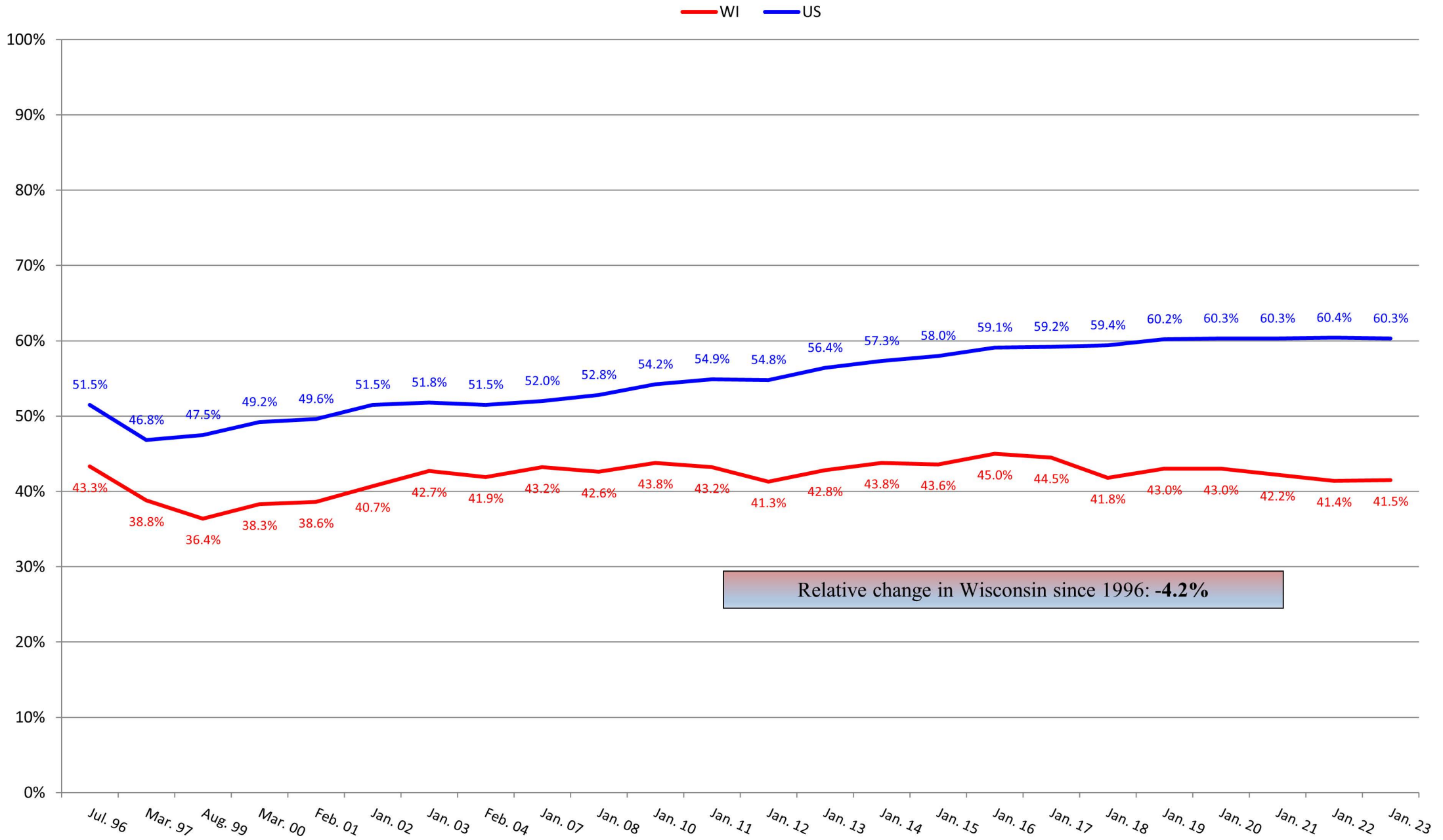


Percentage of Residents Dependent on or Requiring Assistance with Toileting



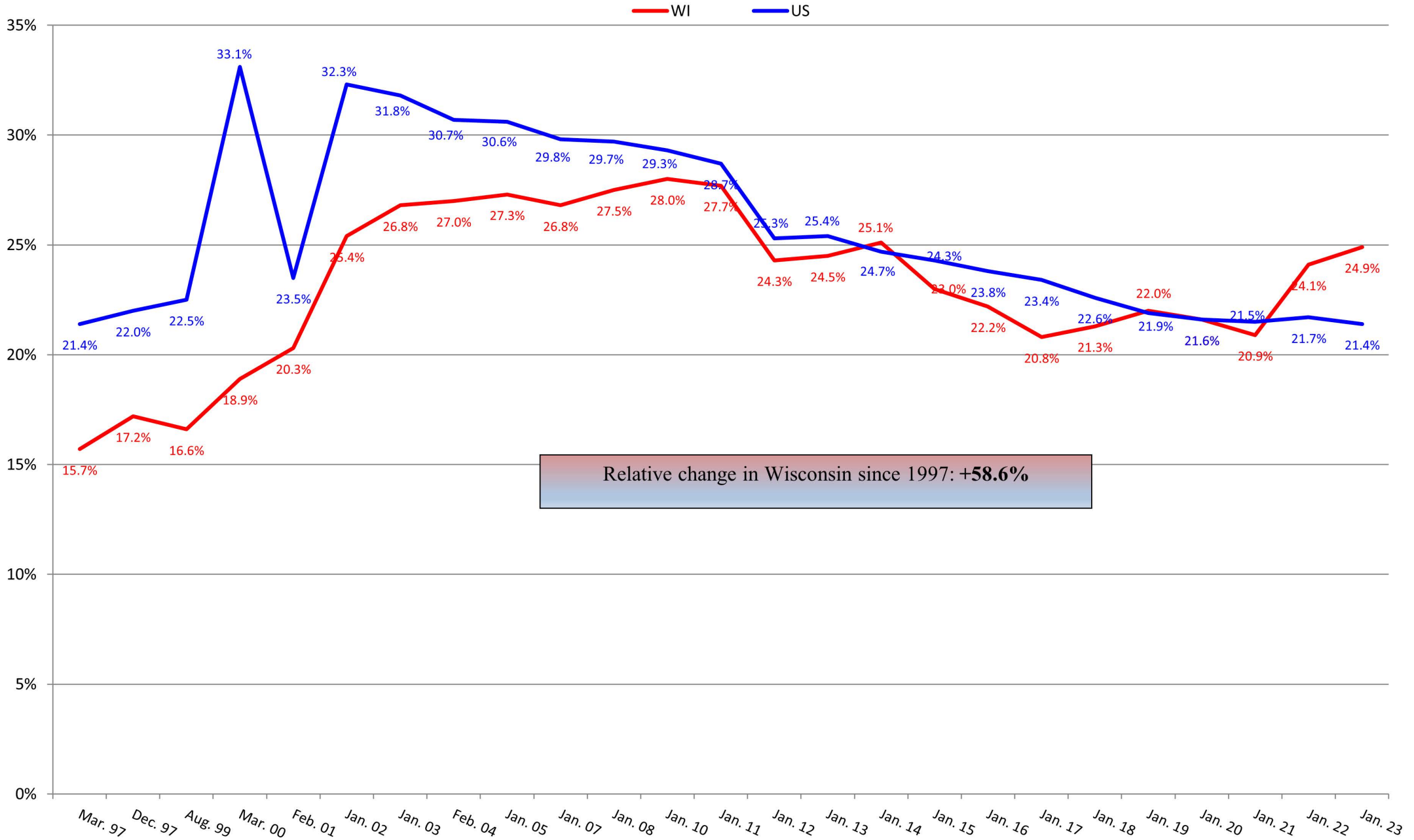


Percentage of Residents Dependent on or Requiring Assistance with Eating



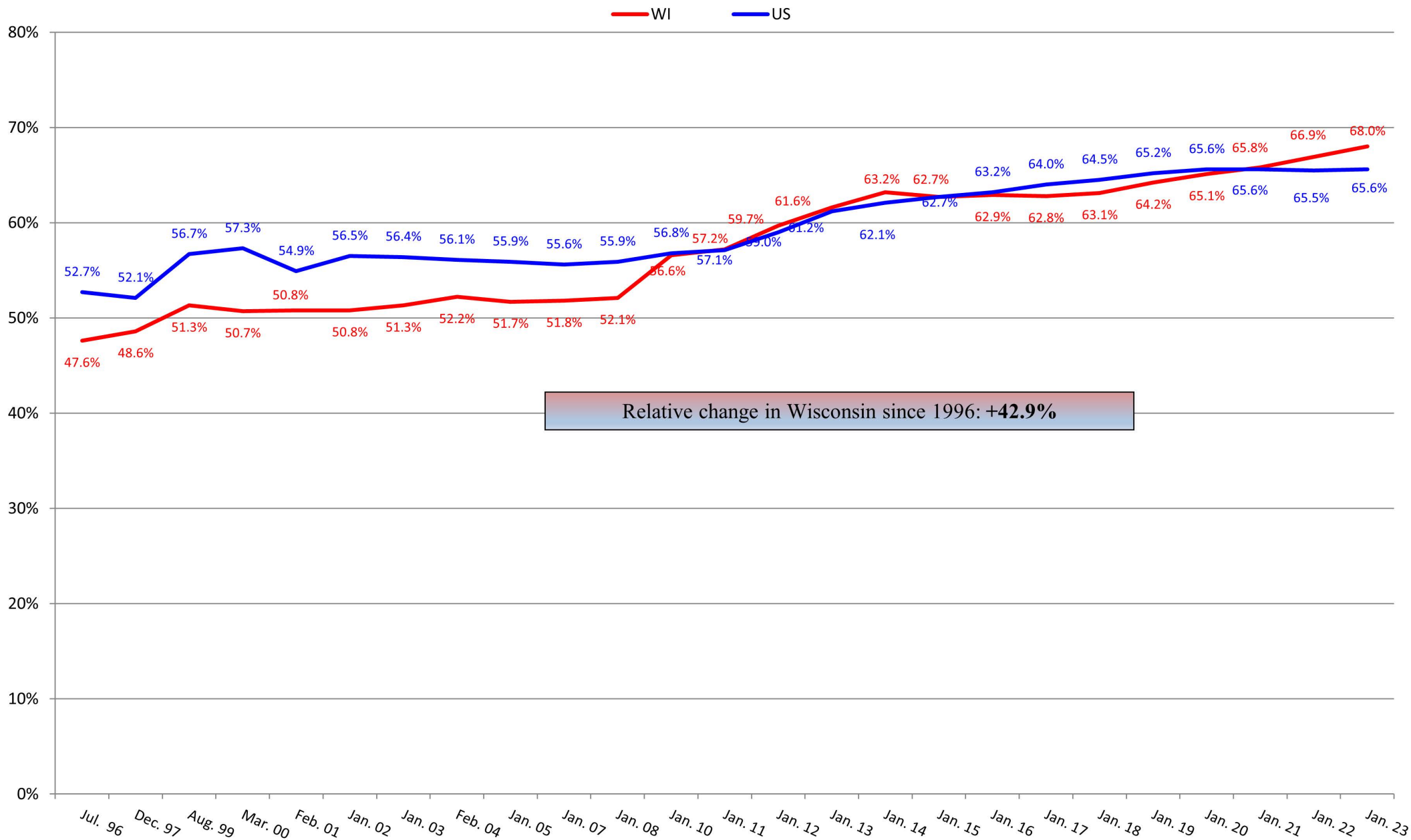


Percentage of Residents with Contractures





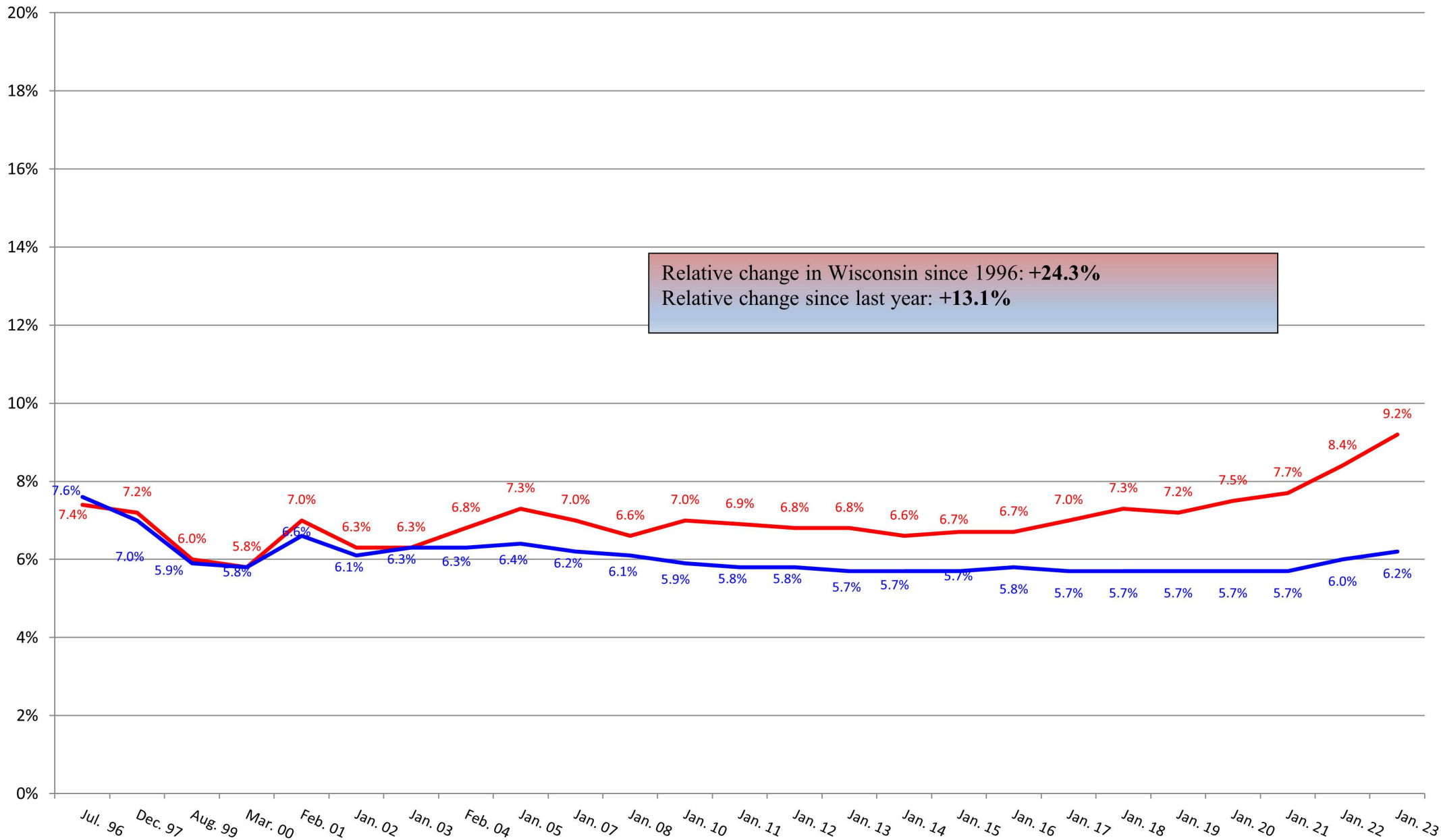
Percentage of Residents Who are Incontinent of Bladder





Percentage of Residents with Catheter

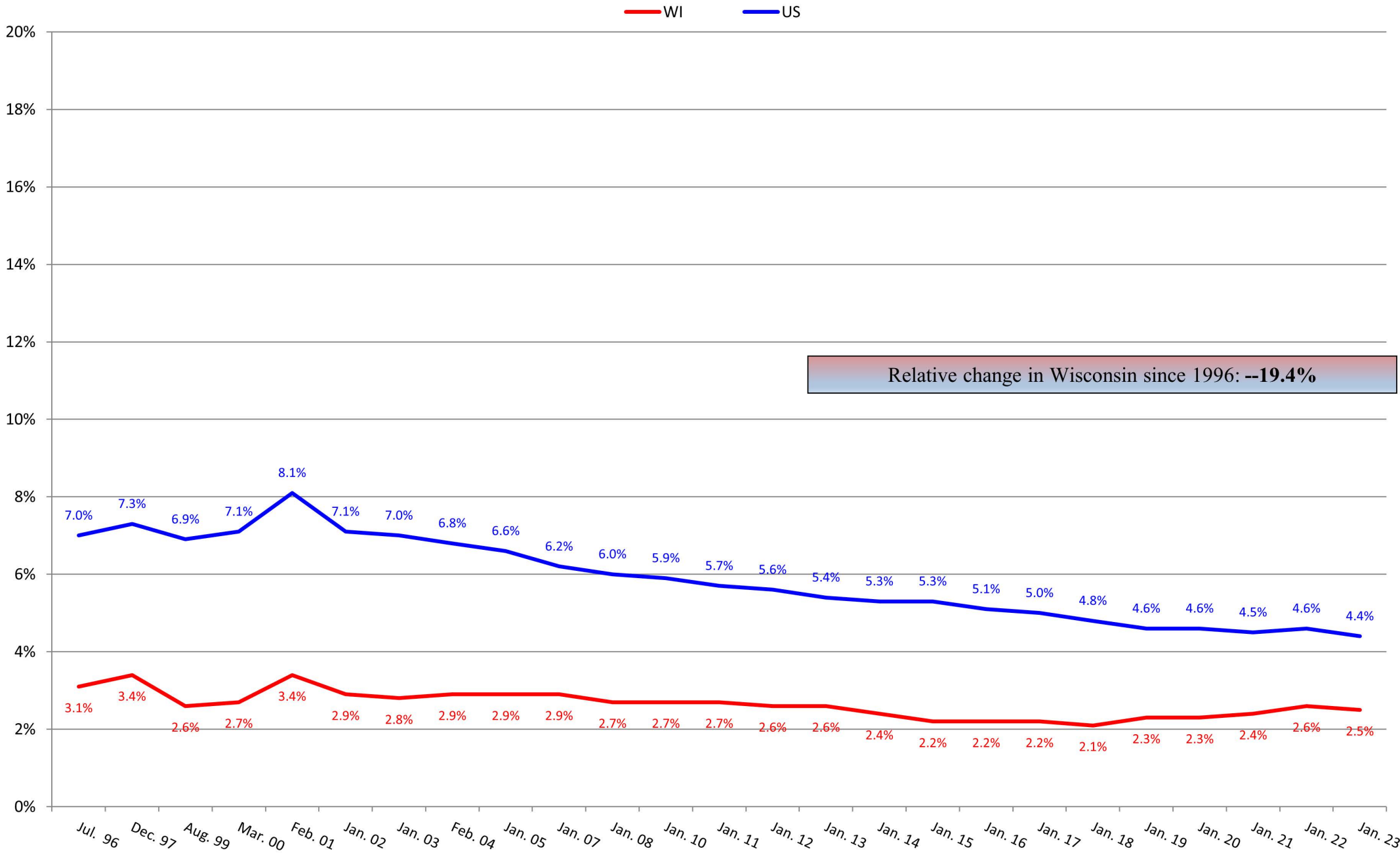
WI US



Relative change in Wisconsin since 1996: **+24.3%**
 Relative change since last year: **+13.1%**



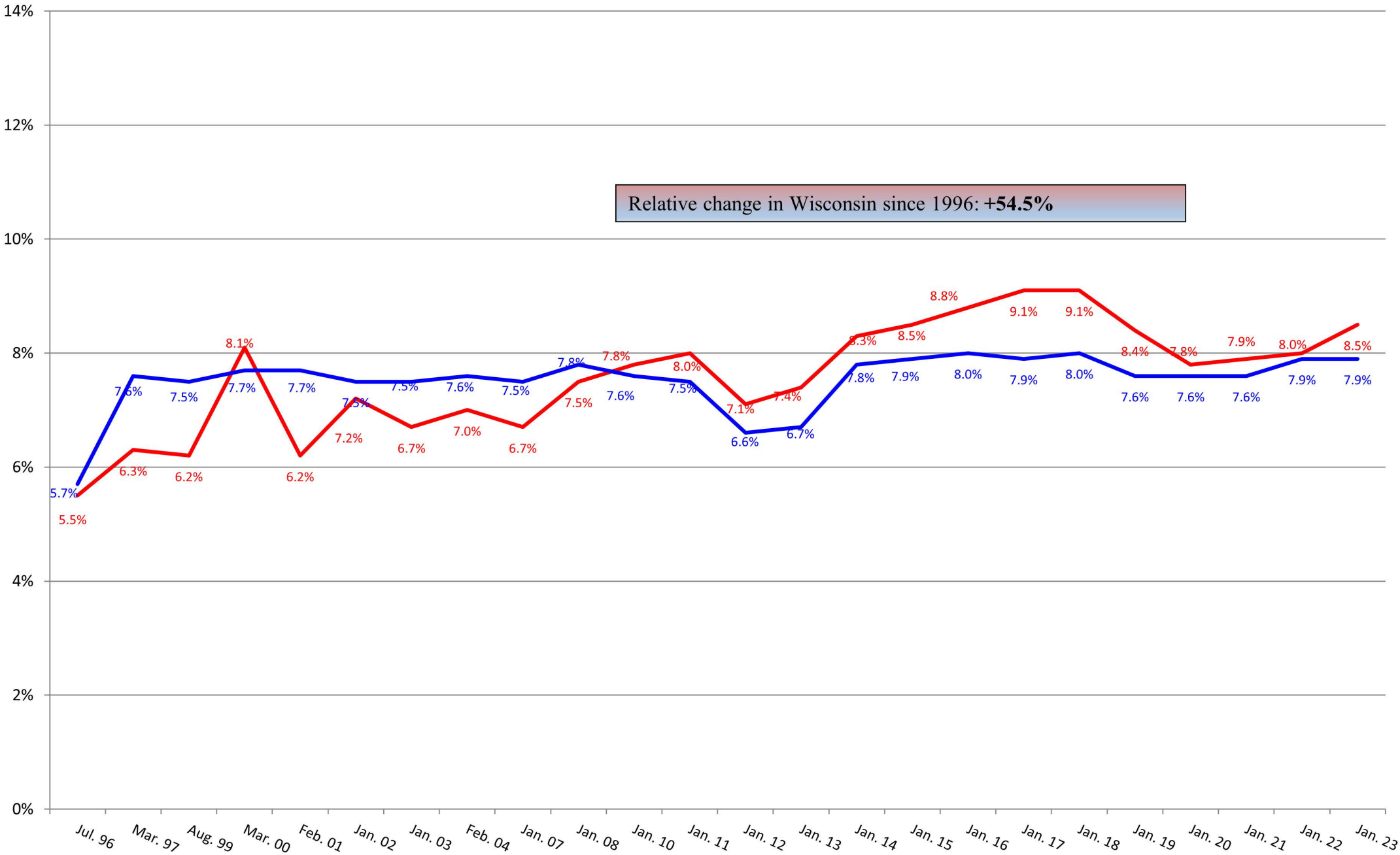
Percentage of Residents on Feeding Tubes





Percentage of Residents with Unplanned Weight Loss

WI US

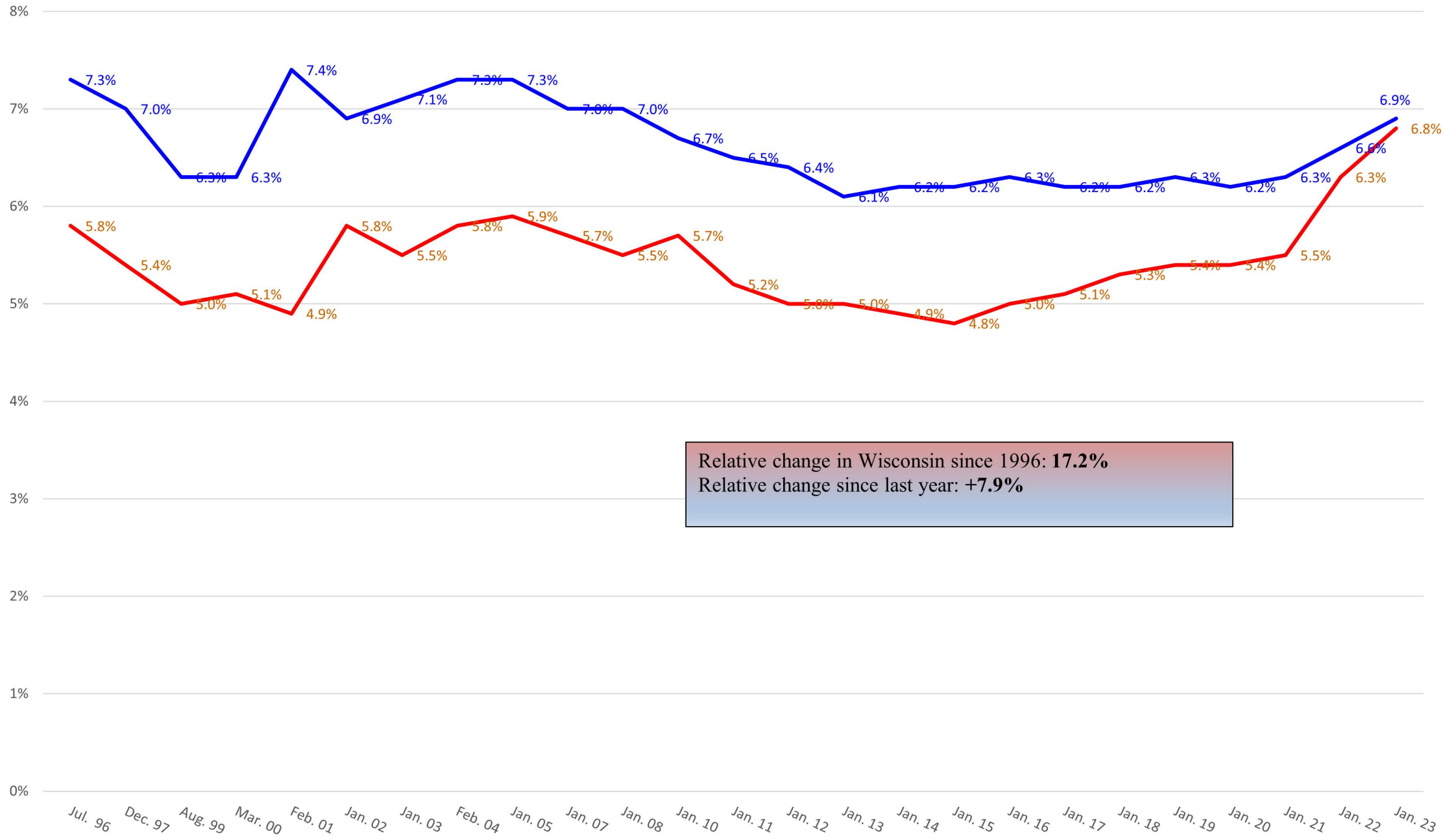


Relative change in Wisconsin since 1996: +54.5%



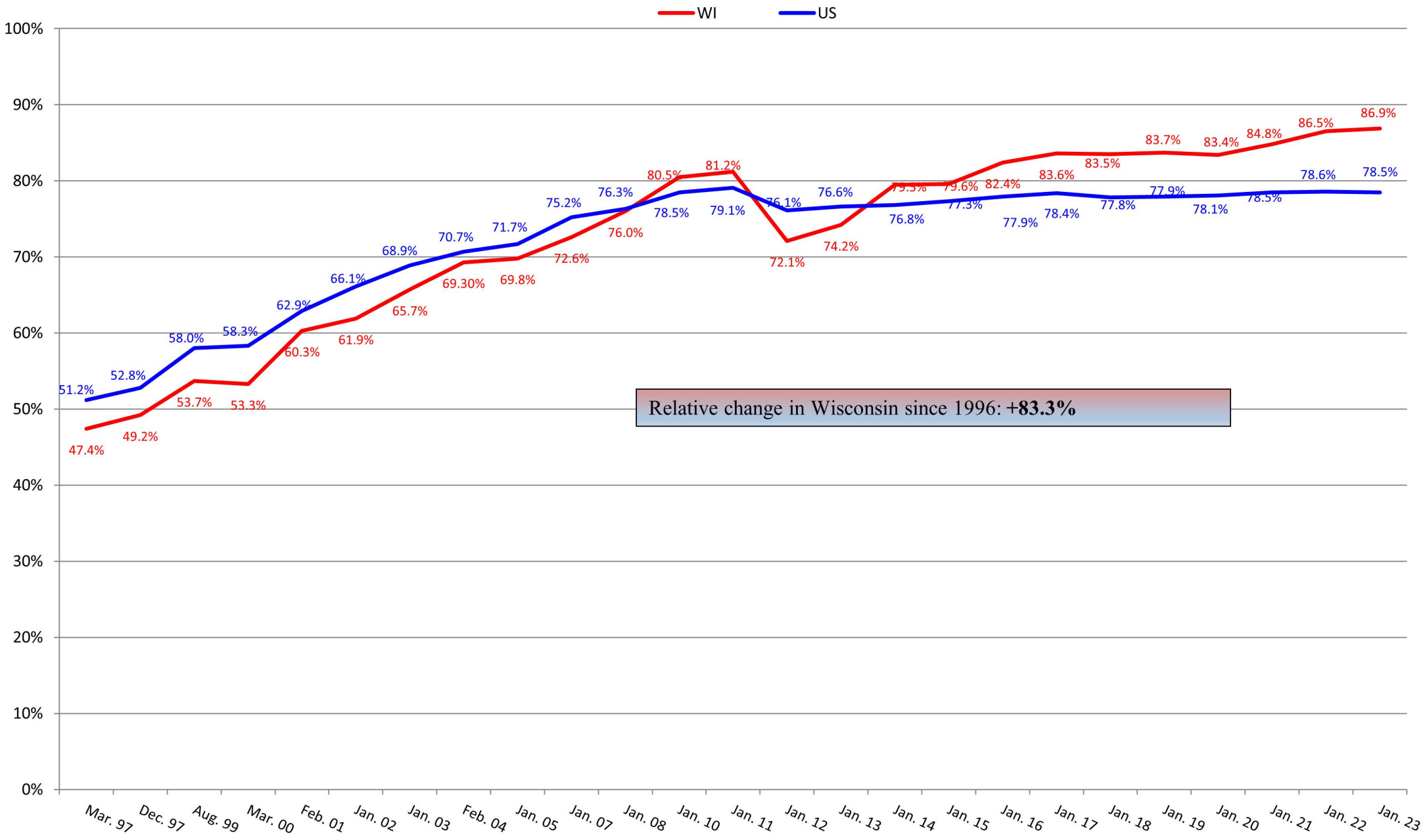
Percentage of Residents with Pressure Injuries

WI US





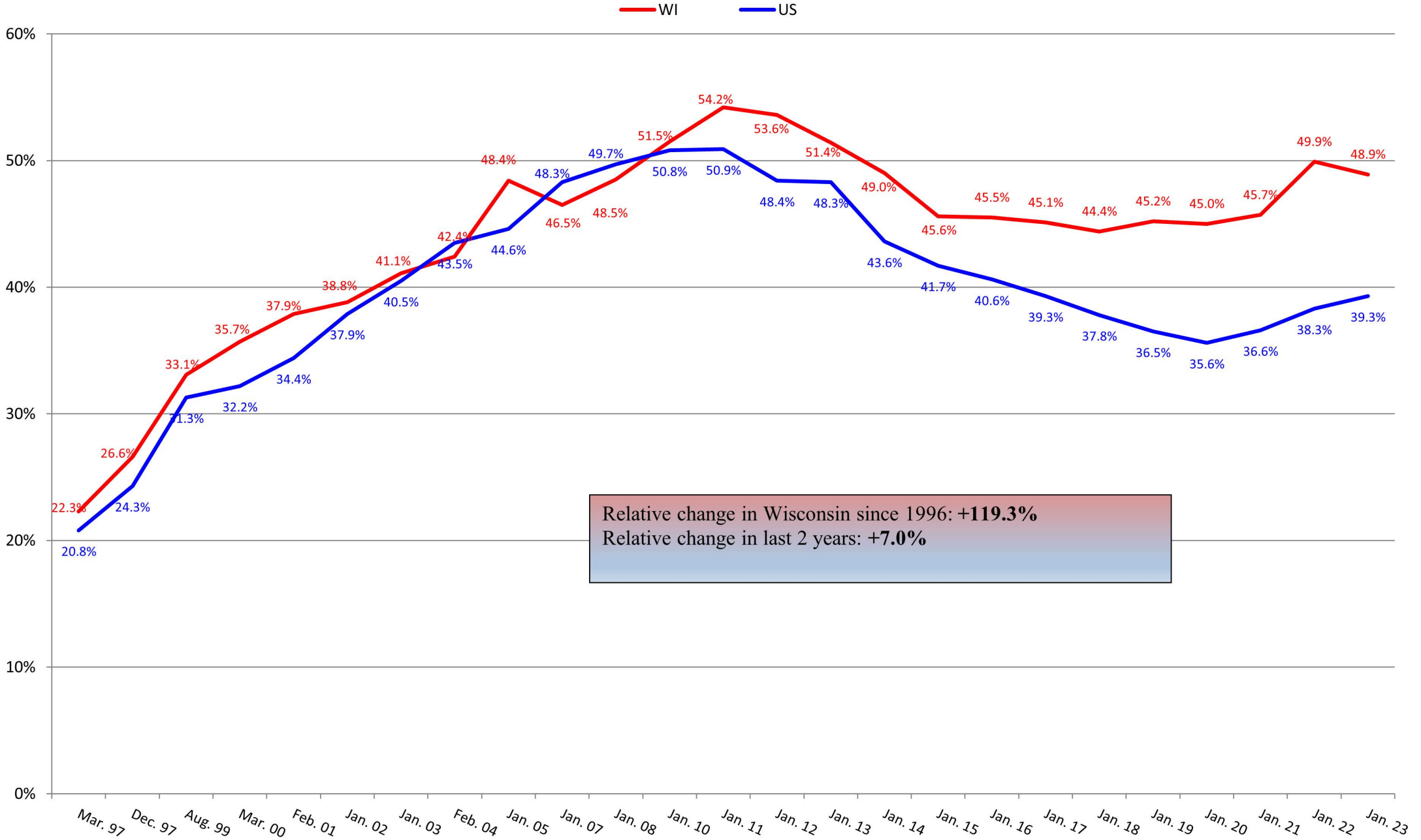
Percentage of Residents Receiving Preventative Skin Care



Relative change in Wisconsin since 1996: **+83.3%**

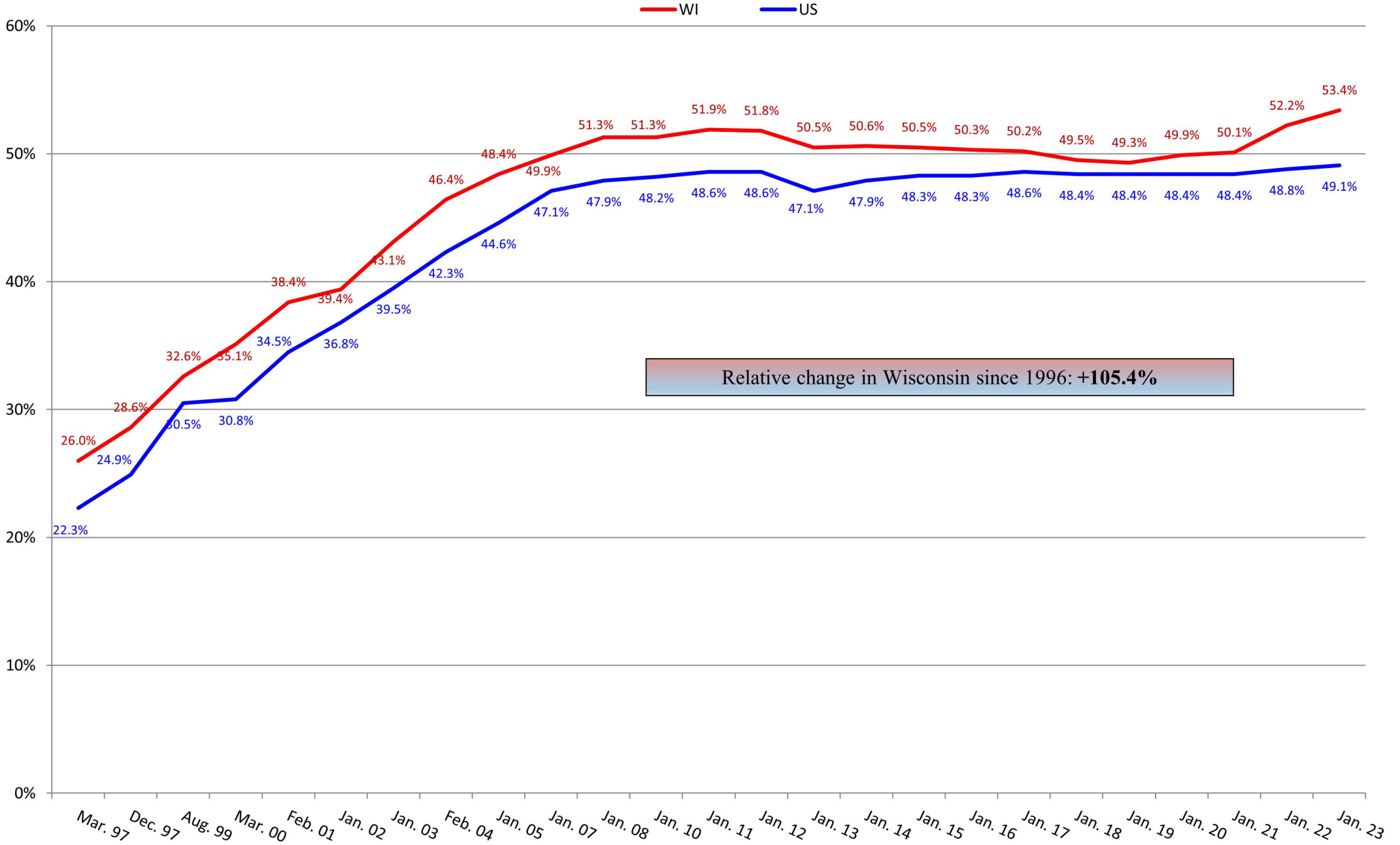


Percentage of Residents with Depression Diagnosis





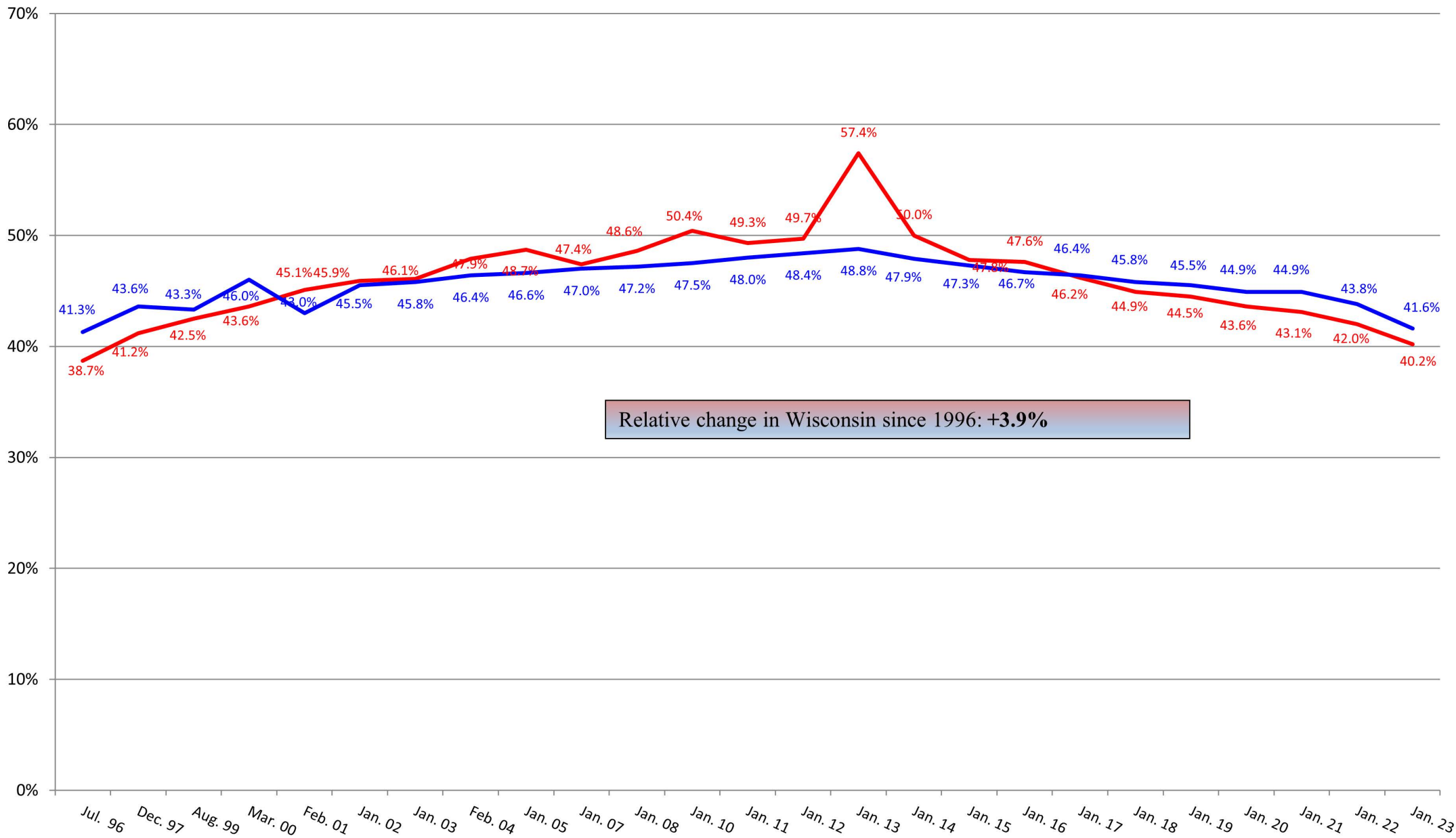
Percentage of Residents Receiving Antidepressant





Percentage of Residents with Dementia

WI US

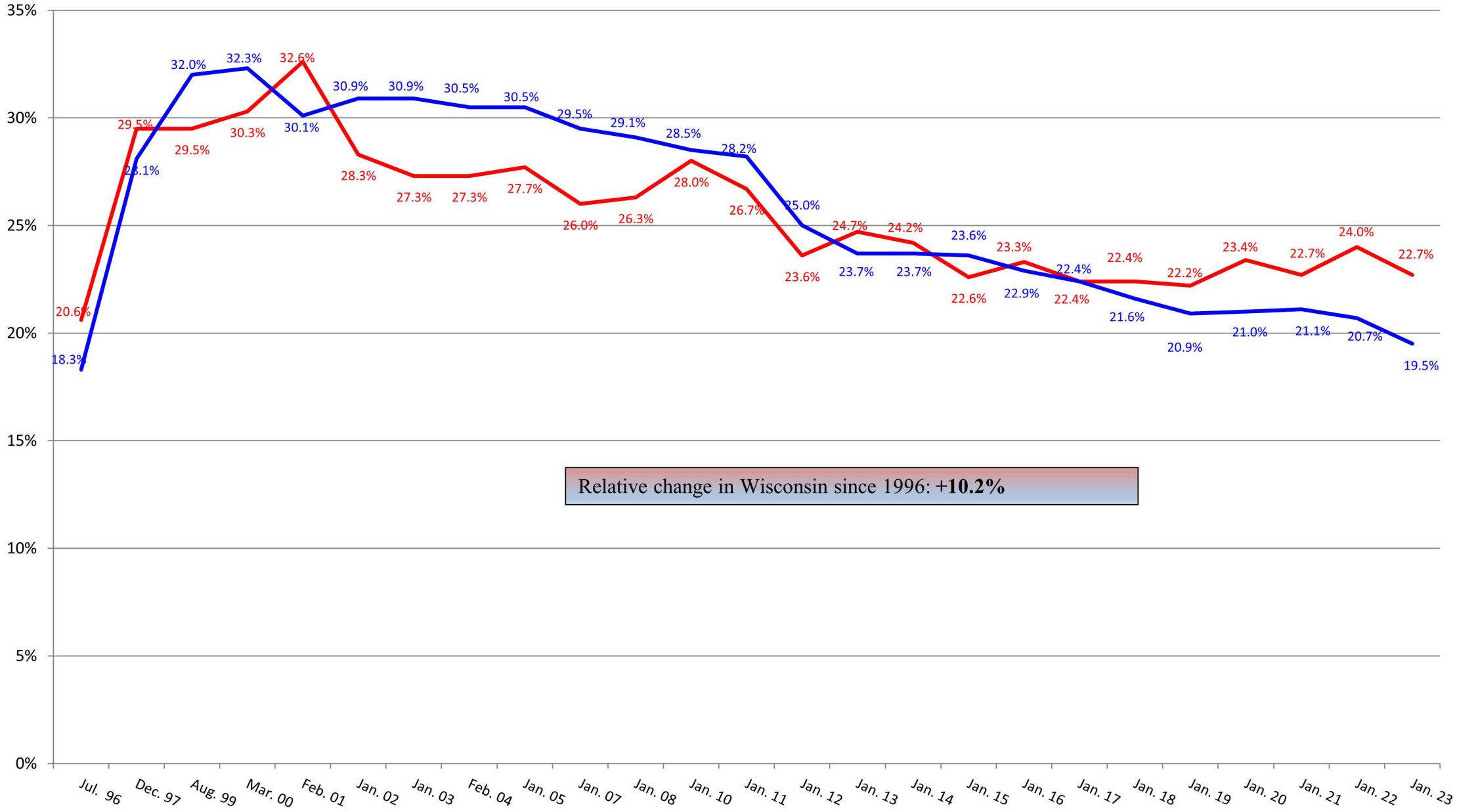


Relative change in Wisconsin since 1996: +3.9%



Percentage of Residents with Behavior Symptoms

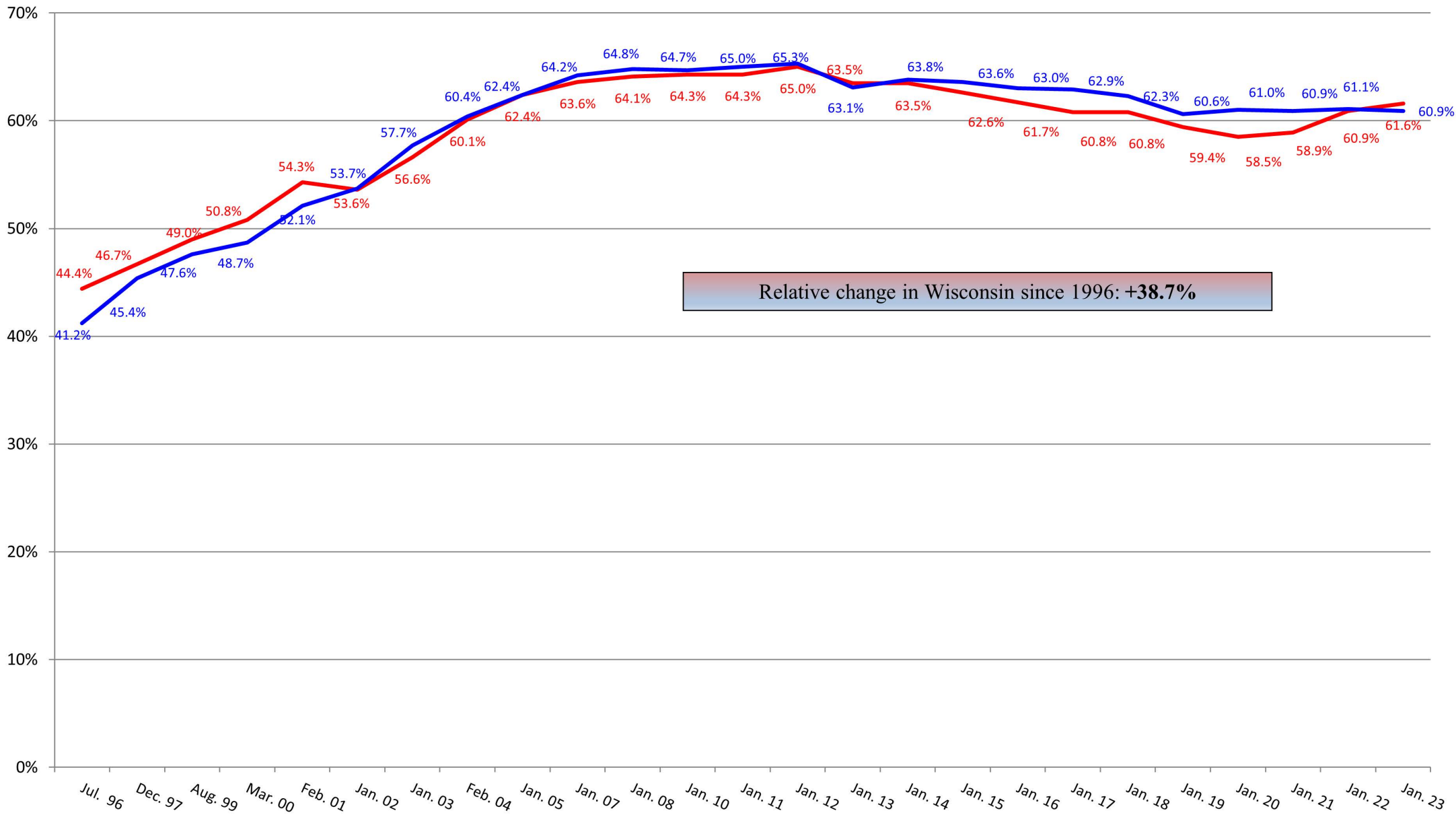
WI US





Percentage of Residents on Psychoactive Medications

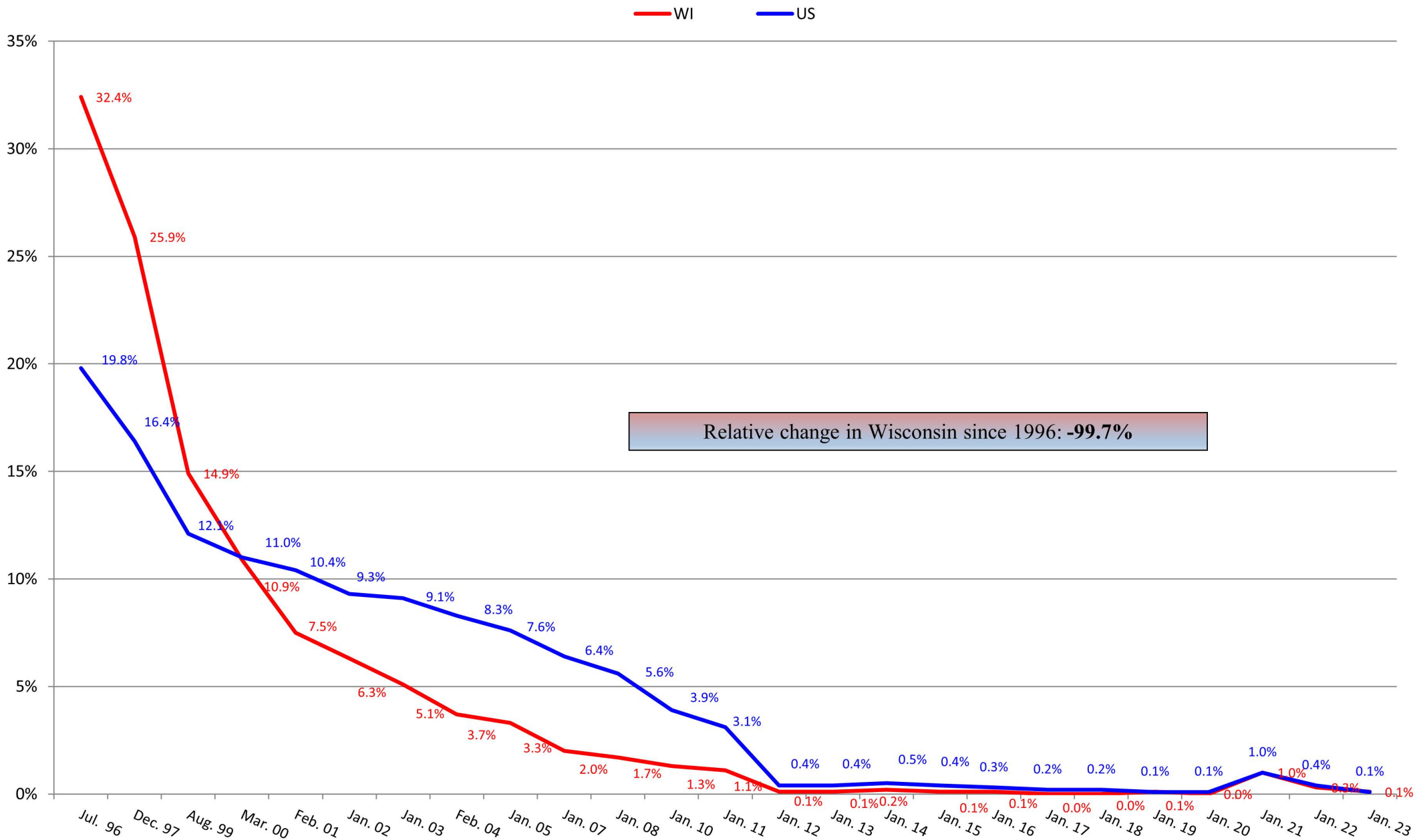
WI US



Relative change in Wisconsin since 1996: **+38.7%**

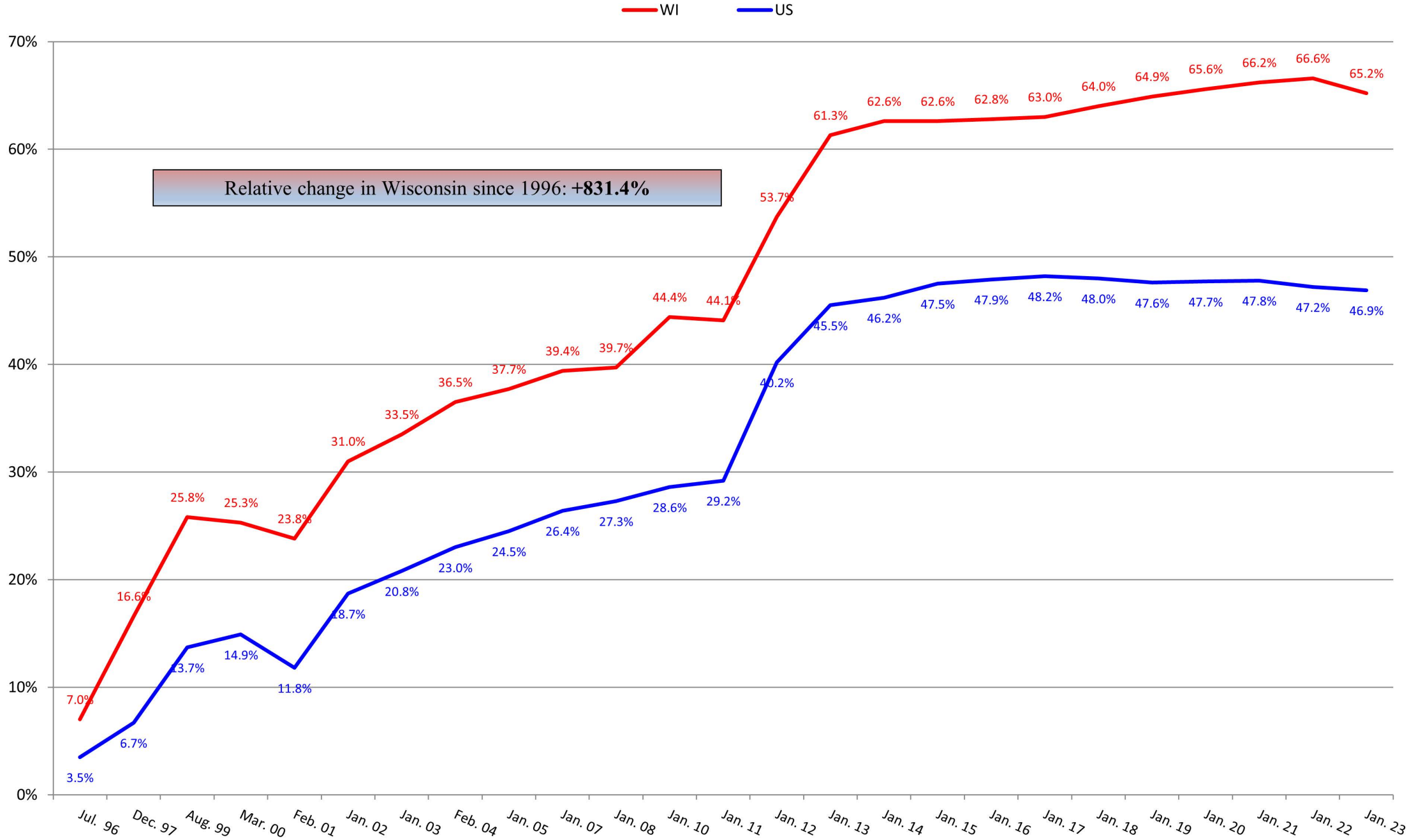


Percentage of Residents Who are Restrained



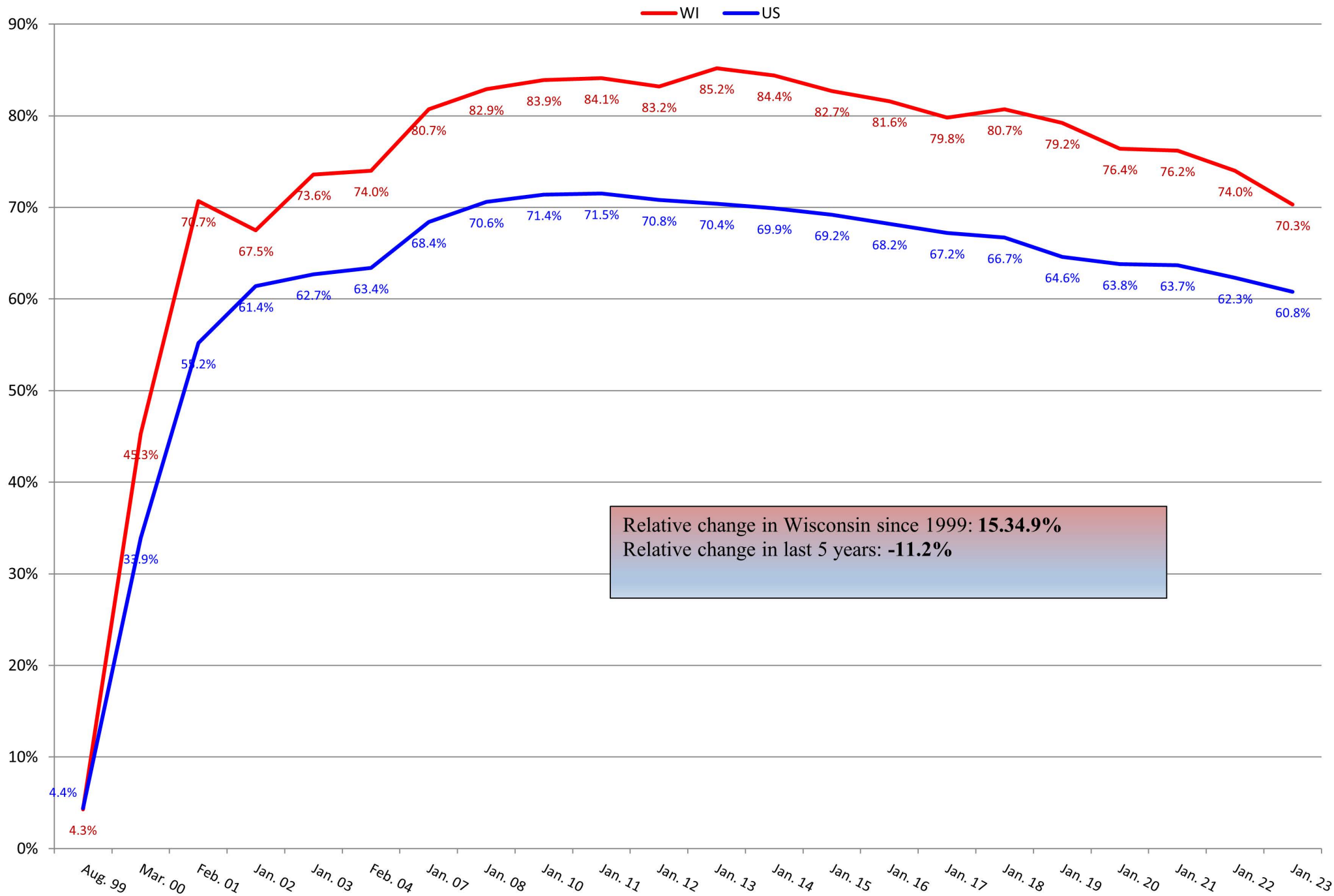


Percentage of Residents on Pain Management Program





Percentage of Residents Immunized for Flu





Percentage of Residents Immunized for Pneumonia

WI US

