

Scott Walker
Governor

Kitty Rhoades
Secretary



State of Wisconsin
Department of Health Services

DIVISION OF LONG TERM CARE

1 WEST WILSON STREET
PO BOX 7851
MADISON WI 53707-7851

Telephone: 608-266-0036
FAX: 608-266-2713
TTY: 888-241-9432
dhs.wisconsin.gov

AGENDA

Nursing Home Provider Meeting Wisconsin Medicaid Nursing Facility Payment Methods

Wednesday, August 21, 2013
9:00AM - 12:00 PM
Conference Room 751
1 West Wilson St.
Madison, WI 53703

- 1. Welcome and opening remarks – Tom Lawless & Brian Shoup**
- 2. Rate Setting Scenario Model Results – Jim Robinson**
- 3. Modernization program update – Dave Varana**
- 4. Vent Rate Workgroup Recommendations – Dave Varana + other participants**
- 5. BEHCI Workgroup Recommendations – Dave Varana + other participants**
- 6. SP Payment Split – Dave Varana**
- 7. Cost Report Redesign – Dave Varana**

SFY 2014 WI T19 FFS Nursing Home Model

Calculation of Medicaid Access Incentive

	NF	ICF/IID
1 Monthly Bed Assessment	\$ 170.00	\$ 910.00
2 Days per month	<u>30.4</u>	<u>30.4</u>
3 Daily Bed Assessment	\$ 5.59	\$ 29.93
4 Patients per Bed	<u>90.5%</u>	<u>90.5%</u>
5 Bed Assessment per Patient Day	\$ 6.18	\$ 33.08
6 Medicaid Patient Percentage	<u>64.0%</u>	<u>99.5%</u>
7 Bed Assessment per Medicaid Patient Day (=MAI)	<u>\$ 9.65</u>	<u>\$ 33.24</u>
	Prior Year MAI	\$ 33.24
	Change	\$ -
	PDs	84,285
	Expend.	\$ -

Budgeted Amounts for Rate and Acuity Increases

	NF	ICF/IID
1 Rate increase supported by GPR/FED <i>% of base expenditures</i>	\$ 1,101,912 0.1%	\$ 238,788 1.2%
2 Increase in patient liability (est.)	\$ 4,748,964 0.6%	\$ - 0.0%
3 Provision for Medicaid Access Incentive	\$ - 0.0%	\$ - 0.0%
4 Provision for Acuity Increase (2% CMI Increase)	\$ 13,128,600 1.5%	\$ - 0.0%
Total	\$ 18,979,476 2.2%	\$ 238,788 1.2%
<i>Expected PDs</i>	5,396,550	84,285
<i>Base Expenditures</i>	\$ 848,918,996	\$ 20,640,019

Preliminary SFY 2014 WI T19 FFS Nursing Home Model Scenario Results

Scenario Description	Nursing Facilities				ICFs/MR			
	For-Profit	Tax-Exempt	Local Govt	Total	For-Profit	Tax-Exempt	Local Govt	Total
T19 FFS PDs	2,512,402	1,764,938	1,119,210	5,396,550	3,352	27,028	53,905	84,285
Gross Expenditures (000's)								
2 Scen 2: SFY14 Base Scenario with SFY14 DHS Projected PDs	396,573.4	282,111.8	170,233.8	848,919.0	591.8	6,632.7	13,415.5	20,640.0
3 Scen 3: Inflate 2011 Final CRs to 2012 and calculate rates for SFY14 using SFY13 formula and average SFY13 acuity	397,787.2	282,272.8	170,263.6	850,323.6	593.9	6,632.9	13,416.3	20,643.1
4 Scen 4: Apply Selected 2012 Raw CR and other information to better estimate 2012 Final CR values	398,229.6	282,585.7	170,728.6	851,543.9	594.3	6,629.9	13,526.7	20,750.8
5 Scen 5: Estimate MDS 3.0/RUG-IV basis for AllRes CMI related to shift from 2011 CR to 2012 CR period	398,317.4	282,632.9	170,750.4	851,700.7	594.3	6,629.9	13,526.7	20,750.8
6 Scen 6: SFY14 LFs w/o Dunn/Dodge/Richland Reclass	398,253.3	282,550.6	170,728.7	851,532.6	594.3	6,629.6	13,521.3	20,745.2
7 Scen 7: SFY14 LFs w/ Dunn Reclass	398,254.5	282,551.8	171,068.9	851,875.2	594.3	6,629.6	13,521.3	20,745.2
8 Scen 8: SFY14 LFs w/ Dodge Reclass	398,345.6	283,065.5	171,347.5	852,758.7	594.3	6,632.2	13,784.4	21,010.9
9 Scen 9: SFY14 LFs w/ Richland Reclass	398,346.7	283,072.5	171,513.0	852,932.3	594.3	6,632.2	13,784.4	21,010.9
10 Scen 10: Change LFs outside of Madison to offset Richland relocation	398,337.1	282,969.3	171,446.3	852,752.7	594.3	6,628.7	13,779.3	21,002.3
11 Scen 11: Property/Modernization Incentive cost estimates for SFY14 (cost neutral)	398,337.1	282,969.3	171,446.3	852,752.7	594.3	6,628.7	13,779.3	21,002.3
12 Scen 12: Average SFY14 acuity	403,105.8	286,448.3	172,866.7	862,420.9	594.3	6,628.7	13,778.7	21,001.7
13 Scen 13: SFY14 Proposed change to Behavior/CI Add-on (cost neutral)	403,105.8	286,448.3	172,866.7	862,420.9	594.3	6,628.7	13,778.7	21,001.7
14 Scen 14: Proposed Ventilator Rate Change (\$550 -> \$561)	403,170.1	286,564.8	172,866.7	862,601.5	594.3	6,628.7	13,778.7	21,001.7
15 Scen 15: Adjust DC Bases to Hit Expenditure Targets	405,050.6	288,603.5	174,248.8	867,902.9	593.6	6,589.8	13,695.2	20,878.5
Cumulative Increase in Gross Expenditures from Base Scenario (000's)								
3 Scen 3: Inflate 2011 Final CRs to 2012 and calculate rates for SFY14 using SFY13 formula and average SFY13 acuity	1,213.8	161.0	29.8	1,404.6	2.1	0.1	0.8	3.0
4 Scen 4: Apply Selected 2012 Raw CR and other information to better estimate 2012 Final CR values	1,656.2	473.9	494.8	2,624.9	2.5	(2.9)	111.2	110.8
5 Scen 5: Estimate MDS 3.0/RUG-IV basis for AllRes CMI related to shift from 2011 CR to 2012 CR period	1,744.0	521.1	516.6	2,781.7	2.5	(2.9)	111.2	110.8
6 Scen 6: SFY14 LFs w/o Dunn/Dodge/Richland Reclass	1,679.9	438.8	494.9	2,613.6	2.5	(3.1)	105.8	105.2
7 Scen 7: SFY14 LFs w/ Dunn Reclass	1,681.2	440.0	835.0	2,956.2	2.5	(3.1)	105.8	105.2
8 Scen 8: SFY14 LFs w/ Dodge Reclass	1,772.3	953.8	1,113.6	3,839.7	2.5	(0.6)	368.9	370.9
9 Scen 9: SFY14 LFs w/ Richland Reclass	1,773.4	960.7	1,279.2	4,013.3	2.5	(0.6)	368.9	370.9
10 Scen 10: Change LFs outside of Madison to offset Richland relocation	1,763.7	857.5	1,212.5	3,833.7	2.5	(4.1)	363.8	362.3
11 Scen 11: Property/Modernization Incentive cost estimates for SFY14 (cost neutral)	1,763.7	857.5	1,212.5	3,833.7	2.5	(4.1)	363.8	362.3
12 Scen 12: Average SFY14 acuity	6,532.4	4,336.5	2,632.9	13,501.9	2.5	(4.0)	363.2	361.7
13 Scen 13: SFY14 Proposed change to Behavior/CI Add-on (cost neutral)	6,532.4	4,336.5	2,632.9	13,501.9	2.5	(4.0)	363.2	361.7
15 Scen 14: Proposed Ventilator Rate Change (\$550 -> \$561)	6,596.7	4,453.0	2,632.9	13,682.5	2.5	(4.0)	363.2	361.7
14 Scen 15: Adjust DC Bases to Hit Expenditure Targets	8,477.2	6,491.7	4,015.0	18,983.9	1.8	(43.0)	279.7	238.5
Expenditures PPD								
2 Scen 2: SFY14 Base Scenario with SFY14 DHS Projected PDs	157.85	159.84	152.10	157.31	176.56	245.40	248.87	244.88
3 Scen 3: Inflate 2011 Final CRs to 2012 and calculate rates for SFY14 using SFY13 formula and average SFY13 acuity	158.33	159.93	152.13	157.57	177.19	245.41	248.89	244.92
4 Scen 4: Apply Selected 2012 Raw CR and other information to better estimate 2012 Final CR values	158.51	160.11	152.54	157.79	177.32	245.30	250.93	246.20
5 Scen 5: Estimate MDS 3.0/RUG-IV basis for AllRes CMI related to shift from 2011 CR to 2012 CR period	158.54	160.14	152.56	157.82	177.32	245.30	250.93	246.20
6 Scen 6: SFY14 LFs w/o Dunn/Dodge/Richland Reclass	158.51	160.09	152.54	157.79	177.31	245.29	250.83	246.13
7 Scen 7: SFY14 LFs w/ Dunn Reclass	158.52	160.09	152.85	157.86	177.31	245.29	250.83	246.13
8 Scen 8: SFY14 LFs w/ Dodge Reclass	158.55	160.38	153.10	158.02	177.31	245.38	255.72	249.28
9 Scen 9: SFY14 LFs w/ Richland Reclass	158.55	160.39	153.24	158.05	177.31	245.38	255.72	249.28
10 Scen 10: Change LFs outside of Madison to offset Richland relocation	158.55	160.33	153.19	158.02	177.31	245.25	255.62	249.18
11 Scen 11: Property/Modernization Incentive cost estimates for SFY14 (cost neutral)	158.55	160.33	153.19	158.02	177.31	245.25	255.62	249.18
12 Scen 12: Average SFY14 acuity	160.45	162.30	154.45	159.81	177.31	245.25	255.61	249.17
13 Scen 12: Average SFY14 acuity	160.45	162.30	154.45	159.81	177.31	245.25	255.61	249.17
14 Scen 14: Proposed Ventilator Rate Change (\$550 -> \$561)	160.47	162.37	154.45	159.84	177.31	245.25	255.61	249.17
15 Scen 15: Adjust DC Bases to Hit Expenditure Targets	161.22	163.52	155.69	160.83	177.09	243.81	254.06	247.71

Preliminary SFY 2014 WI T19 FFS Nursing Home Model Scenario Results

Scenario Description	Nursing Facilities				ICFs/MR			
	For-Profit	Tax-Exempt	Local Govt	Total	For-Profit	Tax-Exempt	Local Govt	Total
T19 FFS PDs	2,512,402	1,764,938	1,119,210	5,396,550	3,352	27,028	53,905	84,285
Cumulative Increase in Expenditures PPD from Base Scenario								
3 Scen 3: Inflate 2011 Final CRs to 2012 and calculate rates for SFY14 using SFY13 formula and average SFY13 acuity	0.48	0.09	0.03	0.26	0.63	0.01	0.01	0.04
4 Scen 4: Apply Selected 2012 Raw CR and other information to better estimate 2012 Final CR values	0.66	0.27	0.44	0.49	0.75	(0.11)	2.06	1.31
5 Scen 5: Estimate MDS 3.0/RUG-IV basis for AllRes CMI related to shift from 2011 CR to 2012 CR period	0.69	0.30	0.46	0.52	0.75	(0.11)	2.06	1.31
6 Scen 6: SFY14 LFs w/o Dunn/Dodge/Richland Reclass	0.67	0.25	0.44	0.48	0.75	(0.11)	1.96	1.25
7 Scen 7: SFY14 LFs w/ Dunn Reclass	0.67	0.25	0.75	0.55	0.75	(0.11)	1.96	1.25
8 Scen 8: SFY14 LFs w/ Dodge Reclass	0.71	0.54	1.00	0.71	0.75	(0.02)	6.84	4.40
9 Scen 9: SFY14 LFs w/ Richland Reclass	0.71	0.54	1.14	0.74	0.75	(0.02)	6.84	4.40
10 Scen 10: Change LFs outside of Madison to offset Richland relocation	0.70	0.49	1.08	0.71	0.75	(0.15)	6.75	4.30
11 Scen 11: Property/Modernization Incentive cost estimates for SFY14 (cost neutral)	0.70	0.49	1.08	0.71	0.75	(0.15)	6.75	4.30
12 Scen 12: Average SFY14 acuity	2.60	2.46	2.35	2.50	0.75	(0.15)	6.74	4.29
13 Scen 13: SFY14 Proposed change to Behavior/CI Add-on (cost neutral)	2.60	2.46	2.35	2.50	0.75	(0.15)	6.74	4.29
14 Scen 14: Proposed Ventilator Rate Change (\$550 -> \$561)	2.63	2.52	2.35	2.54	0.75	(0.15)	6.74	4.29
15 Scen 15: Adjust DC Bases to Hit Expenditure Targets	3.37	3.68	3.59	3.52	0.53	(1.59)	5.19	2.83
Cumulative Percent Increase in Expenditures from Base Scenario								
3 Scen 3: Inflate 2011 Final CRs to 2012 and calculate rates for SFY14 using SFY13 formula and average SFY13 acuity	0.3%	0.1%	0.0%	0.2%	0.4%	0.0%	0.0%	0.0%
4 Scen 4: Apply Selected 2012 Raw CR and other information to better estimate 2012 Final CR values	0.4%	0.2%	0.3%	0.3%	0.4%	0.0%	0.8%	0.5%
5 Scen 5: Estimate MDS 3.0/RUG-IV basis for AllRes CMI related to shift from 2011 CR to 2012 CR period	0.4%	0.2%	0.3%	0.3%	0.4%	0.0%	0.8%	0.5%
6 Scen 6: SFY14 LFs w/o Dunn/Dodge/Richland Reclass	0.4%	0.2%	0.3%	0.3%	0.4%	0.0%	0.8%	0.5%
7 Scen 7: SFY14 LFs w/ Dunn Reclass	0.4%	0.2%	0.5%	0.3%	0.4%	0.0%	0.8%	0.5%
8 Scen 8: SFY14 LFs w/ Dodge Reclass	0.4%	0.3%	0.7%	0.5%	0.4%	0.0%	2.7%	1.8%
9 Scen 9: SFY14 LFs w/ Richland Reclass	0.4%	0.3%	0.8%	0.5%	0.4%	0.0%	2.7%	1.8%
10 Scen 10: Change LFs outside of Madison to offset Richland relocation	0.4%	0.3%	0.7%	0.5%	0.4%	-0.1%	2.7%	1.8%
11 Scen 11: Property/Modernization Incentive cost estimates for SFY14 (cost neutral)	0.4%	0.3%	0.7%	0.5%	0.4%	-0.1%	2.7%	1.8%
12 Scen 12: Average SFY14 acuity	1.6%	1.5%	1.5%	1.6%	0.4%	-0.1%	2.7%	1.8%
13 Scen 13: SFY14 Proposed change to Behavior/CI Add-on (cost neutral)	1.6%	1.5%	1.5%	1.6%	0.4%	-0.1%	2.7%	1.8%
14 Scen 14: Proposed Ventilator Rate Change (\$550 -> \$561)	1.7%	1.6%	1.5%	1.6%	0.4%	-0.1%	2.7%	1.8%
15 Scen 15: Adjust DC Bases to Hit Expenditure Targets	2.1%	2.3%	2.4%	2.2%	0.3%	-0.6%	2.1%	1.2%
Increase in Gross Expenditures from Prior Scenario (000's)								
3 Scen 3: Inflate 2011 Final CRs to 2012 and calculate rates for SFY14 using SFY13 formula and average SFY13 acuity	1,213.8	161.0	29.8	1,404.6	2.1	0.1	0.8	3.0
4 Scen 4: Apply Selected 2012 Raw CR and other information to better estimate 2012 Final CR values	442.4	312.9	465.0	1,220.3	0.4	(3.0)	110.4	107.8
5 Scen 5: Estimate MDS 3.0/RUG-IV basis for AllRes CMI related to shift from 2011 CR to 2012 CR period	87.8	47.2	21.7	156.7	(0.0)	-	-	-
6 Scen 6: SFY14 LFs w/o Dunn/Dodge/Richland Reclass	(64.1)	(82.3)	(21.7)	(168.1)	(0.0)	(0.2)	(5.4)	(5.6)
7 Scen 7: SFY14 LFs w/ Dunn Reclass	1.2	1.2	340.2	342.6	(0.0)	-	-	-
8 Scen 8: SFY14 LFs w/ Dodge Reclass	91.1	513.8	278.6	883.4	-	2.5	263.1	265.7
9 Scen 9: SFY14 LFs w/ Richland Reclass	1.1	7.0	165.5	173.6	-	-	-	-
10 Scen 10: Change LFs outside of Madison to offset Richland relocation	(9.7)	(103.2)	(66.7)	(179.6)	(0.0)	(3.5)	(5.1)	(8.6)
11 Scen 11: Property/Modernization Incentive cost estimates for SFY14 (cost neutral)	-	-	-	-	-	-	-	-
12 Scen 12: Average SFY14 acuity	4,768.8	3,479.0	1,420.4	9,668.1	0.0	0.0	(0.6)	(0.6)
13 Scen 13: SFY14 Proposed change to Behavior/CI Add-on (cost neutral)	-	-	-	-	-	-	-	-
14 Scen 14: Proposed Ventilator Rate Change (\$550 -> \$561)	64.2	116.4	-	180.7	(0.0)	0.0	-	-
15 Scen 15: Adjust DC Bases to Hit Expenditure Targets	1,880.5	2,038.7	1,382.1	5,301.3	(0.7)	(38.9)	(83.5)	(123.2)

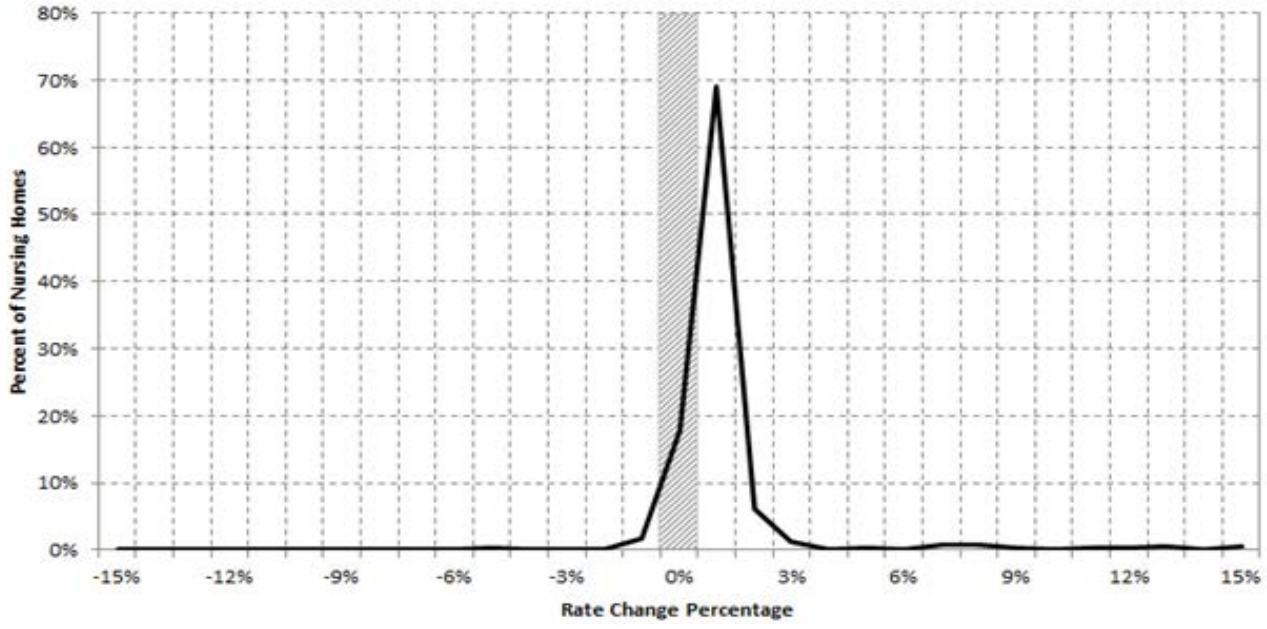
Preliminary SFY 2014 WI T19 FFS Nursing Home Model Scenario Results

Scenario Description	Nursing Facilities				ICFs/MR			
	For-Profit	Tax-Exempt	Local Govt	Total	For-Profit	Tax-Exempt	Local Govt	Total
T19 FFS PDs	2,512,402	1,764,938	1,119,210	5,396,550	3,352	27,028	53,905	84,285
Increase in Expenditures PPD from Prior Scenario								
3 Scen 3: Inflate 2011 Final CRs to 2012 and calculate rates for SFY14 using SFY13 formula and average SFY13 acuity	0.48	0.09	0.03	0.26	0.63	0.01	0.01	0.04
4 Scen 4: Apply Selected 2012 Raw CR and other information to better estimate 2012 Final CR values	0.18	0.18	0.42	0.23	0.12	(0.11)	2.05	1.28
5 Scen 5: Estimate MDS 3.0/RUG-IV basis for AllRes CMI related to shift from 2011 CR to 2012 CR period	0.03	0.03	0.02	0.03	(0.00)	-	-	-
6 Scen 6: SFY14 LFs w/o Dunn/Dodge/Richland Reclass	(0.03)	(0.05)	(0.02)	(0.03)	(0.01)	(0.01)	(0.10)	(0.07)
7 Scen 7: SFY14 LFs w/ Dunn Reclass	0.00	0.00	0.30	0.06	(0.00)	-	-	-
8 Scen 8: SFY14 LFs w/ Dodge Reclass	0.04	0.29	0.25	0.16	-	0.09	4.88	3.15
9 Scen 9: SFY14 LFs w/ Richland Reclass	0.00	0.00	0.15	0.03	-	-	-	-
10 Scen 10: Change LFs outside of Madison to offset Richland relocation	(0.00)	(0.06)	(0.06)	(0.03)	(0.00)	(0.13)	(0.09)	(0.10)
11 Scen 11: Property/Modernization Incentive cost estimates for SFY14 (cost neutral)	-	-	-	-	-	-	-	-
12 Scen 12: Average SFY14 acuity	1.90	1.97	1.27	1.79	0.00	0.00	(0.01)	(0.01)
13 Scen 13: SFY14 Proposed change to Behavior/CI Add-on (cost neutral)	-	-	-	-	-	-	-	-
14 Scen 14: Proposed Ventilator Rate Change (\$550 -> \$561)	0.03	0.07	-	0.03	(0.00)	0.00	-	-
15 Scen 15: Adjust DC Bases to Hit Expenditure Targets	0.75	1.16	1.23	0.98	(0.22)	(1.44)	(1.55)	(1.46)
Percent Increase in Expenditures from Prior Scenario								
3 Scen 3: Inflate 2011 Final CRs to 2012 and calculate rates for SFY14 using SFY13 formula and average SFY13 acuity	0.3%	0.1%	0.0%	0.2%	0.4%	0.0%	0.0%	0.0%
4 Scen 4: Apply Selected 2012 Raw CR and other information to better estimate 2012 Final CR values	0.1%	0.1%	0.3%	0.1%	0.1%	0.0%	0.8%	0.5%
5 Scen 5: Estimate MDS 3.0/RUG-IV basis for AllRes CMI related to shift from 2011 CR to 2012 CR period	0.0%	0.0%	0.0%	0.0%	0.0%	0.0%	0.0%	0.0%
6 Scen 6: SFY14 LFs w/o Dunn/Dodge/Richland Reclass	0.0%	0.0%	0.0%	0.0%	0.0%	0.0%	0.0%	0.0%
7 Scen 7: SFY14 LFs w/ Dunn Reclass	0.0%	0.0%	0.2%	0.0%	0.0%	0.0%	0.0%	0.0%
8 Scen 8: SFY14 LFs w/ Dodge Reclass	0.0%	0.2%	0.2%	0.1%	0.0%	0.0%	2.0%	1.3%
9 Scen 9: SFY14 LFs w/ Richland Reclass	0.0%	0.0%	0.1%	0.0%	0.0%	0.0%	0.0%	0.0%
10 Scen 10: Change LFs outside of Madison to offset Richland relocation	0.0%	0.0%	0.0%	0.0%	0.0%	-0.1%	0.0%	0.0%
11 Scen 11: Property/Modernization Incentive cost estimates for SFY14 (cost neutral)	0.0%	0.0%	0.0%	0.0%	0.0%	0.0%	0.0%	0.0%
12 Scen 12: Average SFY14 acuity	1.2%	1.2%	0.8%	1.1%	0.0%	0.0%	0.0%	0.0%
13 Scen 13: SFY14 Proposed change to Behavior/CI Add-on (cost neutral)	0.0%	0.0%	0.0%	0.0%	0.0%	0.0%	0.0%	0.0%
14 Scen 14: Proposed Ventilator Rate Change (\$550 -> \$561)	0.0%	0.0%	0.0%	0.0%	0.0%	0.0%	0.0%	0.0%
15 Scen 15: Adjust DC Bases to Hit Expenditure Targets	0.5%	0.7%	0.8%	0.6%	-0.1%	-0.6%	-0.6%	-0.6%

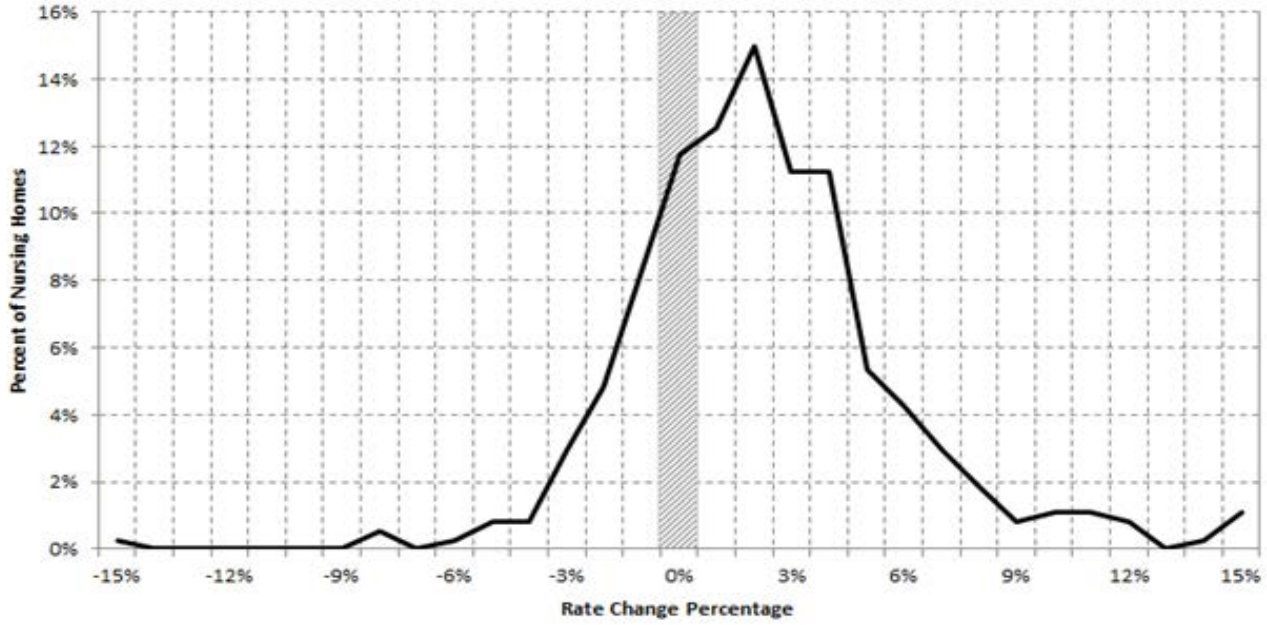
Preliminary SFY 2014 WI T19 FFS Nursing Home Model Rate Formula Values by Scenario

Scenario Description	DC Nursing Base		DC Other Base		Supp. Serv. Target		Beh/CI Base	Vent. Rate
	NF	ICF/MR	NF	ICF/MR	NF	ICF/MR		
Rate Formula Values								
2 Scen 2: SFY14 Base Scenario with SFY14 DHS Proj PDs	74.85	68.81	12.52	14.85	45.60	43.56	0.29	550.00
15 Scen 15: Adjust DC Bases to Hit Expenditure Targets	75.93	68.16	12.70	14.71	45.60	43.56	0.29	561.00
Percentage of Base Scenario (Scen 2) Values								
15 Scen 15: Adjust DC Bases to Hit Expenditure Targets	101.4%	99.1%	101.4%	99.1%	100.0%	100.0%	100.0%	102.0%

**WI Medicaid FFS SFY14 Nursing Home
Rate Change Percentages
(w/o Acuity Change)**



**WI Medicaid FFS SFY14 Nursing Home
Rate Change Percentages
(w/ Acuity Change)**



WI Medicaid Nursing Home Average Nursing Wage per Hour

Excluding County and State/Tribal-Owned Nursing Homes (excludes purchased services and fringe benefits)

Labor Regions**	Modeled T19 Patient		Facility Count		Wages (thousands)		Hours (thousands)		Wage per Hour		Percentage Change		Rescaled Industry		Rescaled	
	SFY13 Pds	SFY14 Pds	2010 CR	2011 CR	2010 CR	2011 CR	2010 CR	2011 CR	2010 CR	2011 CR	% Inc. 09CR to 10CR	% Inc. 10CR to 11CR	SFY13	SFY14	% Inc. SFY12 to SFY13	% Inc. SFY13 to SFY14
Rural	2,411,578	2,173,664	131	126	207,234	197,407	12,673	11,908	16.35	16.58	0.8%	1.4%	0.951	0.952	-0.6%	0.1%
Minneapolis	143,261	127,130	13	13	15,667	15,103	934	919	16.77	16.44	0.4%	-1.9%	0.975	0.944	-0.9%	-3.2%
Duluth/Superior	76,748	60,526	4	4	7,910	7,348	458	424	17.28	17.35	3.0%	0.4%	1.005	0.996	1.5%	-0.9%
Eau Claire	148,826	132,730	11	11	20,707	21,268	1,254	1,278	16.51	16.64	6.8%	0.8%	0.960	0.955	5.4%	-0.5%
La Crosse	128,959	117,056	5	5	14,021	14,139	771	797	18.19	17.73	7.8%	-2.5%	1.058	1.018	6.2%	-3.8%
Wausau	159,487	157,899	7	7	15,217	15,531	853	850	17.84	18.28	1.1%	2.4%	1.037	1.049	-0.4%	1.2%
Madison	431,219	412,814	30	30	62,450	61,239	3,316	3,247	18.83	18.86	1.8%	0.1%	1.095	1.082	0.4%	-1.2%
Janesville	153,900	159,070	7	7	14,730	14,808	877	880	16.79	16.82	2.5%	0.2%	0.976	0.966	1.0%	-1.0%
Racine	111,404	98,951	5	5	11,562	11,513	673	659	17.19	17.48	-0.8%	1.6%	1.000	1.003	-2.2%	0.3%
Kenosha	178,334	159,967	8	8	19,101	18,077	1,060	973	18.02	18.58	1.3%	3.1%	1.047	1.066	-0.2%	1.8%
Green Bay	318,249	293,077	18	18	32,302	31,603	1,978	1,907	16.33	16.57	-0.7%	1.5%	0.949	0.951	-2.1%	0.2%
Sheboygan	140,053	133,873	9	9	14,134	13,345	781	736	18.09	18.14	1.7%	0.3%	1.052	1.041	0.3%	-1.0%
Milwaukee	1,064,745	1,013,440	59	59	180,577	180,832	9,834	9,665	18.36	18.71	1.0%	1.9%	1.067	1.074	-0.5%	0.7%
Appleton	200,678	180,267	11	11	19,950	19,337	1,142	1,102	17.47	17.54	3.6%	0.4%	1.016	1.007	2.2%	-0.9%
Oshkosh	175,784	165,641	6	6	17,424	15,966	984	891	17.71	17.93	3.1%	1.2%	1.030	1.029	1.7%	-0.1%
Fond Du Lac	105,772	94,732	8	8	14,177	13,811	842	817	16.84	16.90	3.7%	0.3%	0.979	0.970	2.2%	-0.9%
Total	5,948,996	5,480,835	332	327	667,164	651,327	38,431	37,052	17.20	17.42	1.4%	1.3%	1.000	1.000	0.0%	0.0%

WI Medicaid Nursing Home Proposed Preliminary SFY14 Labor Factors

Labor Region	Modeled T19 PDS		Unadj. PPS Index		Adj. to Rural Base		Rescaled PPS Index			Preliminary WI Labor Factors*		
	SFY13 Pds	SFY14 Pds	FFY13	FFY14	FFY13	FFY14	FFY13	FFY14	% Chg	SFY13	SFY14	% Chg
Rural	2,411,578	2,173,664	0.9142	0.8904	0.9142	0.8904	0.921	0.907	-1.5%	0.951	0.952	0.1%
Minneapolis	143,261	127,130	1.1336	1.1213	1.1866	1.1737	1.196	1.196	0.0%	1.196	1.196	0.0%
Duluth/Superior	76,748	60,526	1.0741	1.0123	1.1243	1.0596	1.133	1.080	-4.7%	1.133	1.080	-4.7%
Eau Claire	148,826	132,730	0.9705	1.0103	1.0158	1.0575	1.024	1.078	5.3%	0.960	0.955	-0.5%
La Crosse	128,959	117,056	1.0070	1.0205	1.0540	1.0682	1.062	1.089	2.5%	1.058	1.018	-3.8%
Wausau	159,487	157,899	0.8921	0.8802	0.9338	0.9213	0.941	0.939	-0.2%	1.037	1.049	1.2%
Madison	431,219	412,814	1.1264	1.1414	1.1790	1.1947	1.188	1.218	2.5%	1.095	1.082	-1.2%
Janesville	153,900	159,070	0.9458	0.9071	0.9900	0.9495	0.968	0.968	-3.0%	0.976	0.966	-1.0%
Racine	111,404	98,951	0.9158	0.8903	0.9586	0.9319	0.966	0.950	-1.7%	1.000	1.003	0.3%
Kenosha	178,334	159,967	1.0558	1.0658	1.1051	1.1156	1.114	1.137	2.1%	1.047	1.066	1.8%
Green Bay	318,249	293,077	0.9793	0.9587	1.0250	1.0335	1.023	1.023	-1.0%	0.949	0.951	0.2%
Sheboygan	140,053	133,873	0.9515	0.9203	0.9959	0.9633	1.004	0.982	-2.2%	1.052	1.041	-1.0%
Milwaukee	1,064,745	1,013,440	0.9931	0.9856	1.0395	1.0316	1.047	1.051	0.4%	1.067	1.074	0.7%
Appleton	200,678	180,267	0.9268	0.9445	0.9701	0.9886	0.978	1.007	3.0%	1.016	1.007	-0.9%
Oshkosh	175,784	165,641	0.9433	0.9398	0.9874	0.9837	0.995	1.002	0.7%	1.030	1.029	-0.1%
Fond Du Lac	105,772	94,732	0.9158	0.9477	0.9586	0.9920	0.966	1.011	4.7%	0.979	0.970	-0.9%
Total	5,948,996	5,480,835			0.9924	0.9813	1.000	1.000	0.0%	1.007	1.007	0.0%

\$ 163.58 \$ 165.81 <--PPS Urban Base

\$ 156.28 \$ 158.41 <--PPS Rural Base

*Sauk County moved to the Madison LR beginning SFY07, Rock County in SFY09, and Dodge and Richland in SFY14. Dunn moved to Minneapolis LR beginning SFY14.

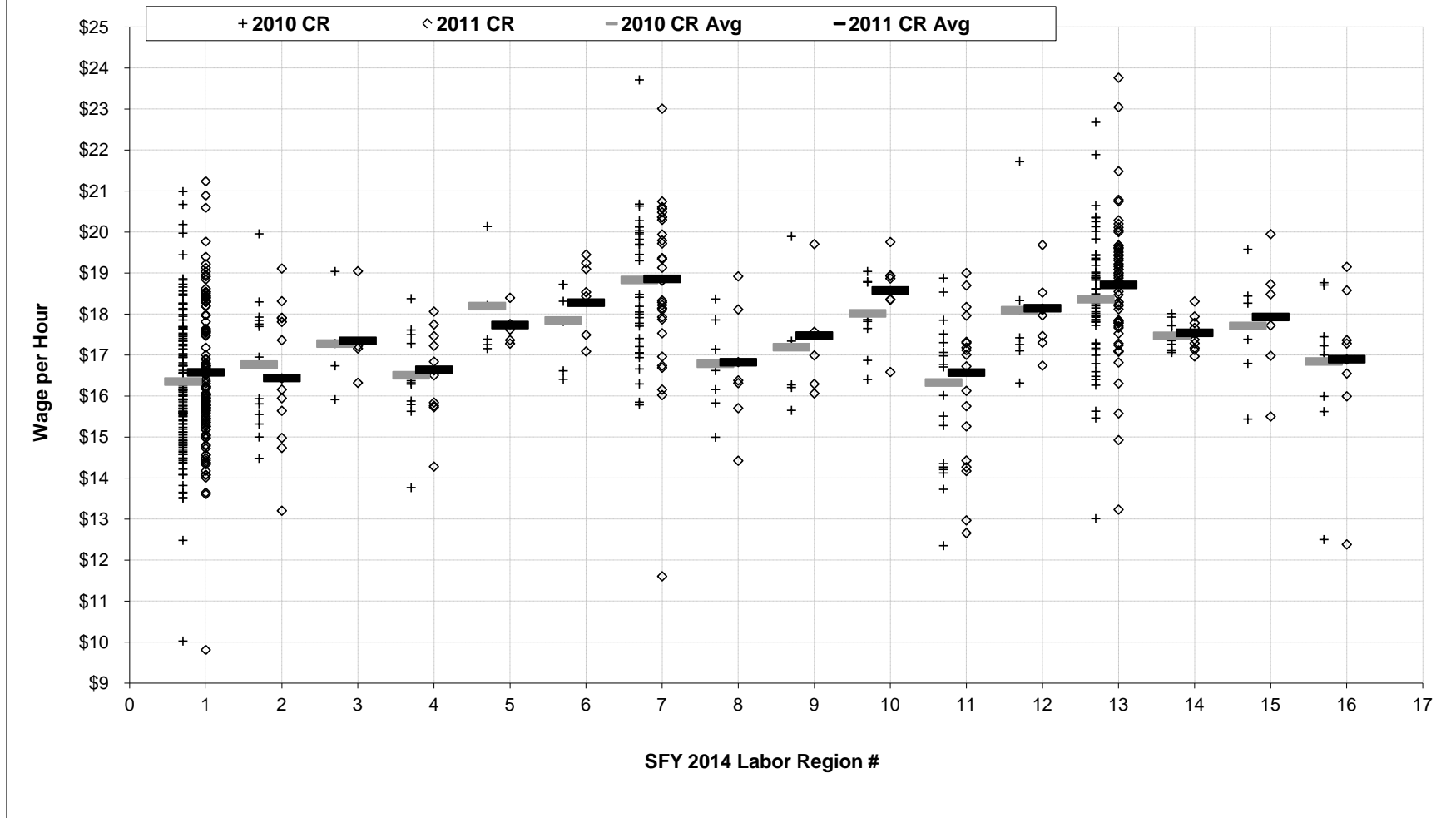
Proposed Final SFY14 Labor Factors

Final SFY12	Final SFY13	Prelim. SFY14	Final SFY14*	% Chg	Adjusted Final**
0.956	0.954	0.952	0.954	0.0%	0.953
1.164	1.172	1.188	1.175	0.3%	1.174
1.080	1.095	1.073	1.083	-1.1%	1.082
0.948	0.958	0.955	0.954	-0.4%	0.953
1.018	1.034	1.018	1.023	-1.1%	1.022
1.038	1.037	1.049	1.041	0.4%	1.040
1.088	1.091	1.082	1.087	-0.4%	1.087
1.088	1.091	1.082	1.087	-0.4%	1.087
1.006	1.003	1.000	1.003	0.0%	1.002
1.040	1.042	1.047	1.043	0.1%	1.042
0.972	0.963	0.949	0.961	-0.2%	0.960
1.039	1.042	1.052	1.044	0.2%	1.043
1.076	1.073	1.067	1.072	-0.1%	1.071
0.997	1.004	1.016	1.006	0.2%	1.005
1.007	1.012	1.030	1.016	0.4%	1.015
0.941	0.949	0.979	0.956	0.7%	0.955

* Final values based upon a three-year moving average.

** Labor factors other than Madison and Janesville reduced to offset cost of Richland County relocation to Madison LR.

SFY14 Labor Factor Development *



- | | | | | | | | |
|---|-----------------|---|------------|----|-----------|----|-------------|
| 1 | Rural | 5 | La Crosse | 9 | Racine | 13 | Milwaukee |
| 2 | Minneapolis | 6 | Wausau | 10 | Kenosha | 14 | Appleton |
| 3 | Duluth/Superior | 7 | Madison | 11 | Green Bay | 15 | Oshkosh |
| 4 | Eau Claire | 8 | Janesville | 12 | Sheboygan | 16 | Fond Du Lac |

* Includes non-County and non-State/Tribal Owned Facilities with 2011 Final Cost Reports.

WI 12/31/2012 Nursing Home Non-DD Residents

Includes in-house and bedhold residents; excludes TBI and ventilator residents; July 2013 MDS/MMIS Extract

PopID	Name	Medicaid FFS Non-DD Residents			All-Resident Non-DD Residents		
		Count	RUG-48 NA	RUG-48 CMI	Count	RUG-48 NA	RUG-48 CMI
103	Algoma Medical Center & LTCU	41	-	0.932	53	-	0.928
105	American Heritage Care Center	19	-	1.295	46	3	1.306
107	American Lutheran Home-Menomonie	15	-	0.977	39	1	1.097
108	Manor Care Health Services - Appleton	36	4	1.094	78	7	1.160
109	Manor Care Health Services - East	22	-	1.125	45	3	1.187
110	Manor Care Health Services - West	51	1	0.974	91	7	1.106
111	Oak Park Nursing and Rehab Center	32	-	0.920	90	8	1.060
112	Franciscan Care & Rehab Center	79	-	0.846	107	1	0.905
113	St. Marys Care Center	79	-	0.908	169	9	1.063
114	Ashland Care Center	42	-	0.962	69	3	1.050
116	Augusta Area Nursing Home	25	-	0.931	45	2	0.883
118	Wheaton Franciscan - Terrace at St. Francis	32	-	1.138	71	5	1.196
120	CARE-AGE OF BROOKFIELD	41	1	0.890	100	11	0.977
140	Whispering Oaks Care Center	2	-	0.490	3	-	0.710
141	Barron Memorial Medical Center	10	-	0.939	18	-	0.904
142	Barron Healthcare Center	26	1	0.917	42	3	1.028
143	Northern Lights Manor	35	-	0.968	53	3	0.991
145	Golden Living Center - Beaver Dam	52	1	1.044	68	4	1.111
146	Hillside Manor	66	-	1.014	118	5	1.082
147	Beechwood Rest Home	10	-	1.120	20	-	0.954
148	Bel Air Health Care Center	51	-	0.953	112	5	0.968
150	Beloit Health & Rehabilitation Center	85	4	1.190	122	12	1.228
151	Eastside Rehabilitation Center	72	-	1.066	109	-	1.094
153	Juliette Manor	26	2	0.963	42	6	1.041
154	Bethany Home, Inc.	56	-	1.099	97	2	1.155
155	Bethany St. Joseph Care Center	59	-	1.083	126	4	1.095
157	Bethel Center	44	-	1.083	72	1	1.150
158	Bethel Home	40	1	0.930	80	4	1.039
159	Bethel Home	83	1	0.938	131	4	1.005
162	Birch Hill Care Center	34	-	0.886	53	1	0.982
163	Heartland Country Village	13	-	1.005	40	3	1.045
164	Luther Midelfort-Chippewa Valley	19	-	0.995	29	1	1.067
165	Bloomfield Manor	37	1	0.875	70	2	0.938
167	Bornemann Nursing Home	42	1	1.028	81	6	1.133
168	Golden LivingCenter - Bradley	77	1	1.159	154	5	1.206
170	Brookside Care Center	77	1	0.991	148	10	1.107
171	Brown County Health Care Center	55	-	0.858	60	-	0.868
173	American Lutheran-Mondovi	25	-	1.168	50	1	1.210
174	Burnett Medical Center-ECU	32	-	0.842	46	1	0.874
176	Bethany Riverside	41	-	0.986	115	-	1.056
201	Becker Shoop Center	25	1	1.034	63	2	1.111
202	Homestead Care Center	28	1	0.975	43	2	1.002
203	Cameo Care Center	32	-	0.854	97	3	0.998
207	All About Life Rehabilitation Center	28	-	1.137	72	-	1.220

WI 12/31/2012 Nursing Home Non-DD Residents

Includes in-house and bedhold residents; excludes TBI and ventilator residents; July 2013 MDS/MMIS Extract

PopID	Name	Medicaid FFS Non-DD Residents			All-Resident Non-DD Residents		
		Count	RUG-48 NA	RUG-48 CMI	Count	RUG-48 NA	RUG-48 CMI
208	Premier Rehabilitation & Skilled Nursing Center	67	2	0.969	111	7	1.068
209	Cedar Crest Health Center	46	-	1.029	86	4	1.145
210	Cedar Lake Health Care Center	105	-	0.992	212	5	1.094
212	Villa Marina Health and Rehab Center	34	1	1.248	61	3	1.346
213	Chilton Care Center	22	1	1.008	37	2	1.052
214	Lakeside Nursing & Rehabilitation	46	-	0.970	95	5	1.066
216	Chippewa Manor Nursing Home	19	-	0.970	51	3	1.090
217	Oakview Care Center	33	-	0.874	48	3	0.910
218	Christian Home & Rehab Center	26	-	0.928	51	3	1.003
221	Clark County Health Care Center	92	-	1.008	159	2	1.054
224	Alden-Meadow Park HCC	49	2	0.969	63	4	1.035
226	Colfax Health and Rehab Center	32	-	1.016	47	-	1.063
227	Colonial Center	36	-	1.239	54	1	1.242
228	Belmont Care Center LLC.	47	3	0.975	78	5	1.080
229	Colonial Manor Med & Rehab	57	-	0.897	85	1	1.015
230	Golden Living Center-Colonial Manor	38	2	1.028	122	13	1.169
231	Columbia Health Care Center	66	-	0.995	109	6	1.057
232	Columbus Nursing & Rehabilitation Center	25	-	1.068	38	2	1.125
233	Spooner Health System	48	1	0.970	69	2	1.033
235	Golden LivingCenter - Wisconsin Dells	37	-	1.068	75	5	1.210
236	Evansville Manor	25	-	0.979	64	3	1.063
237	Golden LivingCenter - Randolph	38	-	0.929	62	1	1.027
238	Golden Living Center - Continental Manor	47	-	0.987	73	1	1.023
239	Cornell Area Care Center	29	-	1.172	48	-	1.185
241	Countryside Home	61	1	0.942	112	9	1.017
242	Golden Living Center - Ashland	51	-	1.054	71	3	1.099
243	The Crandon Nursing Home	35	1	0.827	48	3	0.913
244	Willow Ridge	34	-	0.934	49	2	0.966
245	Christian Community Home of Osceola	17	-	0.792	40	1	0.879
246	Cumberland Memorial Hospital NH	27	-	1.035	38	1	0.962
247	Dove Healthcare Nursing and Rehab	52	-	1.013	141	8	1.107
249	Clement Manor	76	-	1.011	154	11	1.096
250	Christian Community Home	26	-	1.058	58	1	1.074
270	Dallas Healthcare Center	22	-	0.982	38	-	1.009
271	Badger Prairie Health Care Center	99	-	0.922	114	-	0.958
275	Divine Savior Nursing Home	50	-	0.965	77	6	1.054
276	Clearview	86	1	0.917	110	1	0.960
277	Door County Mem Hosp Skilled Nursing Facility	14	-	1.174	21	-	1.126
278	Golden LivingCenter - Dorchester	48	-	0.911	83	2	1.008
280	Dunn County Health Care Center	61	-	0.908	109	-	1.000
281	Avanti Health & Rehabilitation	35	-	1.077	67	3	1.161
304	The Clairemont	58	2	1.017	118	6	1.107
305	Edgerton Hospital & Health Services	37	-	0.865	59	3	0.991
306	Edgewater Haven	32	-	0.918	61	3	0.989

WI 12/31/2012 Nursing Home Non-DD Residents

Includes in-house and bedhold residents; excludes TBI and ventilator residents; July 2013 MDS/MMIS Extract

PopID	Name	Medicaid FFS Non-DD Residents			All-Resident Non-DD Residents		
		Count	RUG-48 NA	RUG-48 CMI	Count	RUG-48 NA	RUG-48 CMI
307	Heritage Manor	44	-	0.945	72	1	1.015
308	Reedsburg Area Senior Life Ctr	24	-	1.081	48	1	1.072
309	WFH - LAKESHORE MANOR	23	1	1.024	48	3	1.170
310	Middleton Village Nursing & Rehab	45	1	0.922	83	3	1.020
312	Evergreen Care Center	38	1	0.971	48	1	0.987
313	Evergreen Health Center	39	-	0.935	79	3	0.999
314	Eden Rahabilitation Suites & Green House Home	11	-	0.846	43	4	1.079
331	FAIRHAVEN	35	-	0.985	77	3	1.059
332	Fall Creek Valley Nursing Home	23	1	0.899	38	3	1.002
334	Sharpe Care	53	-	0.955	87	3	0.969
336	Family Heritage NH	22	-	0.956	38	-	1.017
337	North Ridge Medical & Rehab Center	47	-	0.940	75	4	1.042
338	Kennedy Park Medical & Rehab Center	56	-	0.988	84	2	1.087
339	Colony Oaks Care Center	31	1	0.964	45	2	1.019
340	Vallhaven Care Center	46	-	1.048	70	1	1.086
341	Strawberry Lane Medical & Rehab Center	46	-	1.074	68	5	1.090
342	SouthPointe HealthCare Center	74	-	0.985	158	14	1.134
343	Good Samaritan Center - Fennimore	34	-	0.870	53	-	0.904
344	Fond Du Lac Lutheran Home, Inc.	43	-	1.095	97	3	1.162
347	Golden Living Center - Fort Atkinson	34	-	0.906	65	1	1.102
348	Four Winds Manor, Inc.	22	-	0.866	52	1	1.052
349	Frederic Care Center	32	-	0.942	43	3	0.984
350	Friendly Village Nursing & Rehab Center	49	-	0.893	80	2	0.967
351	Wheaton Franciscan - Franciscan Woods	36	1	1.079	108	12	1.190
352	Franciscan Villa	41	1	1.059	130	4	1.171
353	Trinity Village	19	1	1.105	74	3	1.126
371	HARTFORD CARE CENTER	23	-	1.049	47	4	1.148
372	The Woodlands of Gillett	21	-	0.816	28	1	0.856
376	Glenhaven, Inc.	20	-	1.078	34	1	1.099
377	Golden LivingCenter - Village Gardens	58	-	0.976	79	3	1.031
378	Pigeon Falls Nursing Home	16	-	0.950	34	-	1.043
380	Golden Age Manor	75	1	0.922	110	6	0.955
381	Golden Living Center - Golden Age	41	-	1.030	66	2	1.130
382	Golden Living Center - Rib Lake	26	-	0.951	38	-	0.990
383	Grancare Nursing & Rehabilitation Center	19	1	1.114	44	1	1.006
384	Grancare Nursing Center	44	-	0.935	68	4	1.004
385	Grande Prairie Health and Rehab. Center	48	-	0.970	85	4	1.070
386	Grand View Care Center, inc.	73	-	0.940	97	-	0.971
387	Gray's Nursing Home	12	-	0.938	18	-	0.928
388	East Troy Manor	22	2	1.020	45	5	1.176
389	Greentree Health & Rehabilitation Center	15	1	0.901	45	1	1.071
390	Greenway Manor	39	-	1.009	59	1	1.030
392	Eastcastle Place - Bradford	4	1	1.057	27	3	1.043
394	Good Shepherd Home	11	-	1.040	38	3	1.127

WI 12/31/2012 Nursing Home Non-DD Residents

Includes in-house and bedhold residents; excludes TBI and ventilator residents; July 2013 MDS/MMIS Extract

PopID	Name	Medicaid FFS Non-DD Residents			All-Resident Non-DD Residents		
		Count	RUG-48 NA	RUG-48 CMI	Count	RUG-48 NA	RUG-48 CMI
401	HALES CORNERS CARE CENTER	14	-	0.991	52	4	1.050
402	Hamilton Care Center	54	-	0.985	75	2	1.048
405	Hayward Area Memorial Nursing Home	27	1	0.869	47	4	0.906
408	Oregon Manor	22	-	0.973	38	1	1.009
409	Manor Care Health Services - Pewaukee	49	1	1.096	103	3	1.182
410	SHEBOYGAN PROGRESSIVE CARE CENTER	43	2	1.266	77	9	1.307
411	HERITAGE NURSING HOME	20	-	1.147	54	5	1.215
412	Heritage of Elmwood	19	-	1.013	36	-	1.035
413	Fairview Nursing Home	35	1	1.010	54	2	1.046
414	Hetzel Care Center	9	-	0.924	22	1	0.930
416	RIDGEWOOD CARE CENTER	99	2	0.872	184	10	0.969
418	Cedar Springs Health & Rehabilitation Center	20	1	1.039	54	7	1.217
422	Hillview Health Care Center	75	-	1.032	182	4	1.073
424	HOLTON MANOR	37	1	1.004	54	1	1.070
427	Lutheran Home for the Aging	66	-	0.953	170	5	1.088
429	Homme Home for the Aging	43	-	1.126	87	3	1.156
430	Hope Health & Rehabilitation Center	15	-	0.991	26	2	1.065
431	Hospitality Nursing & Rehabilitation Center	47	-	1.073	85	1	1.182
433	Manawa Community Nursing Center	10	-	1.093	17	-	1.045
450	NEWCare Convalescent Center	40	-	1.011	55	3	1.064
451	Ingleside, Inc.	36	1	1.031	70	3	1.019
452	Iola Nursing Home	21	-	1.093	47	1	1.151
462	Mary Jude Nursing Home	18	-	0.903	42	3	0.980
465	St Clare Meadows Care Center	47	-	0.972	94	2	1.083
481	Karmenta Center	43	1	1.095	74	7	1.166
482	Kewaunee Care Center	37	-	0.940	43	-	0.947
483	Knapp Haven Nursing Home	67	1	0.946	94	2	0.957
501	Ladysmith Nursing Home	15	-	1.246	29	-	1.236
502	Lafayette Manor	37	1	0.966	53	2	0.990
503	Geneva Lake Manor	20	-	0.994	53	1	1.165
505	Ladysmith Living Center, Inc.	23	1	0.968	30	2	0.937
508	Lakeland Nursing Home	70	-	1.026	105	-	1.078
509	Lakeview Manor	26	-	0.925	41	1	0.954
510	Lakeview Health Center	55	1	0.947	106	1	1.005
511	Lancaster Care Center	26	-	0.979	44	1	1.080
513	LASATA CARE CENTER	101	-	1.023	159	4	1.091
514	Aspirus Lillian Kerr Healthcare Center, Inc.	25	-	0.967	39	-	1.039
517	Lincoln Village Convalescent Center	31	-	1.009	95	3	1.134
518	Good Samaritan Center	25	-	1.072	46	1	1.162
519	Luther Home	70	-	0.951	108	4	0.996
520	LUTHER MANOR	78	-	0.954	191	3	1.036
521	Lindengrove New Berlin	50	-	0.933	115	1	1.033
522	Lindengrove Waukesha	53	1	0.956	121	10	1.034
523	Lindengrove Menomonee Falls	36	-	1.005	115	14	1.164

WI 12/31/2012 Nursing Home Non-DD Residents

Includes in-house and bedhold residents; excludes TBI and ventilator residents; July 2013 MDS/MMIS Extract

PopID	Name	Medicaid FFS Non-DD Residents			All-Resident Non-DD Residents		
		Count	RUG-48 NA	RUG-48 CMI	Count	RUG-48 NA	RUG-48 CMI
524	LINDENGROVE - MUKWONAGO	15	-	0.941	45	1	1.092
529	Marywood Convalescent Center	42	-	0.926	71	5	1.007
530	Syverson Lutheran Home	36	-	1.082	95	2	1.166
532	Manitowoc Health Care Center	88	-	0.945	144	5	1.052
535	Maple Lane Health Care Center	40	-	1.077	54	-	1.102
536	ManorCare Health Services - Fond du Lac	23	-	1.108	67	1	1.148
537	Deerfield Care Center	28	1	0.870	48	1	0.967
538	Maplewood of Sauk Prairie	60	1	1.048	109	6	1.167
539	Mayville Nursing & Rehabilitation Center	49	-	1.156	68	-	1.222
540	Golden Living Center - Three Oaks	47	-	0.994	104	4	1.134
543	Marinuka Manor	26	-	1.022	48	1	1.052
545	Marquardt Memorial Manor, Inc.	70	-	1.061	121	2	1.099
546	Marshfield Care Center, LLC	53	-	0.916	94	2	1.033
547	Maryhill Manor, Inc.	39	1	1.004	72	4	1.087
549	MEADOWVIEW MANOR	32	-	1.248	50	1	1.256
550	Memorial Nursing Home	73	2	0.979	90	3	1.012
553	Upland Hills - Nursing and Rehab. Center	18	-	0.796	41	1	0.912
554	Memorial Nursing Home	33	-	0.874	48	1	0.901
555	MENOMONEE FALLS HEALTH CARE CENTER	38	-	1.206	63	2	1.228
557	Mellen Manor	15	-	0.942	25	-	1.060
558	Maplewood Health Center	32	-	1.198	123	6	1.160
560	Middle River Healthcare Center	53	-	1.052	80	1	1.078
562	MILLWAY CARE CENTER, INC.	28	-	0.786	50	4	0.862
564	Milwaukee County Rehab Center- Main Campus	57	5	0.679	67	5	0.662
565	MILWAUKEE CATHOLIC HOME	39	-	0.931	108	6	0.965
567	Jewish Home & Care Center	60	-	1.063	145	5	1.105
568	Mineral Point Care Center	14	-	0.986	27	2	0.990
570	Monroe Manor Nursing & Rehab Center	18	-	1.247	45	3	1.338
571	Montello Care Center	27	-	0.942	40	1	0.995
572	Golden Living Center - Superior	47	-	0.976	76	3	1.027
574	MORNINGSIDE HEALTH CENTER	21	-	1.263	36	1	1.356
575	Morrow Memorial Home	45	-	1.089	81	1	1.127
577	Mt. Carmel Health & Rehab Center	159	-	0.942	287	3	1.008
578	Mount Carmel Care Center	51	-	0.964	89	2	1.021
581	Mulder Health Care Facility	31	-	0.886	73	1	0.927
582	Baldwin Care Center	18	1	0.802	33	2	0.885
583	Muskego Nursing Home	35	1	1.175	48	2	1.187
585	Capitol Lakes Health Center	16	1	0.834	79	16	0.998
586	THE CLAIRIDGE HOUSE	37	1	0.773	55	1	0.855
588	MERCY RESIDENTIAL & REHAB CTR	9	-	1.056	56	4	1.289
598	Lake Country Health and Rehab Center	29	1	1.062	86	8	1.277
600	Nazareth Health & Rehab. Center	43	3	0.944	82	6	1.057
601	Memorial Hospital	27	-	0.973	59	2	0.994
606	New Glarus Home	35	1	0.942	64	4	1.001

WI 12/31/2012 Nursing Home Non-DD Residents

Includes in-house and bedhold residents; excludes TBI and ventilator residents; July 2013 MDS/MMIS Extract

PopID	Name	Medicaid FFS Non-DD Residents			All-Resident Non-DD Residents		
		Count	RUG-48 NA	RUG-48 CMI	Count	RUG-48 NA	RUG-48 CMI
607	Norseland Nursing Home	27	1	0.905	55	2	1.007
608	Heritage Manor	50	1	0.995	86	3	1.065
612	Oakwood Village East	4	-	0.923	38	6	1.208
613	Norwood Health Center	14	-	0.674	18	-	0.706
614	Nu-Roc Community Health Care, Inc.	35	-	0.833	39	-	0.849
661	Oak Ridge Care Center	45	-	0.962	72	1	1.019
662	Oakridge Gardens Nursing Center	63	-	1.071	93	3	1.140
663	Oakwood Lutheran Home	18	-	0.895	84	3	0.968
664	Omro Care Center	31	-	1.068	56	1	1.173
665	Onalaska Care Center	32	-	0.977	85	1	1.019
666	Anna John Nursing Home	22	-	0.916	24	-	0.915
668	Orchard Manor	62	-	0.907	106	3	0.968
669	Northpoint Medical & Rehab Center	50	3	1.150	86	5	1.151
670	Luther Midelfort Oakridge	11	-	0.954	20	-	0.869
671	Brewster Village	118	1	0.877	189	7	0.949
673	Odd Fellow Home	32	1	1.053	60	1	1.132
701	River's Bend Health & Rehabilitation	46	2	1.148	90	6	1.229
703	Park Manor	65	1	0.969	109	6	1.067
706	Parkview Home	24	-	0.830	44	-	0.962
707	Parkside Care Center	44	1	1.109	56	1	1.150
709	Parkview Manor Health & Rehab Center	67	2	1.017	98	3	1.093
710	Fountain View Care Center	15	-	0.942	45	1	1.065
712	Heartland HCC - Platteville	37	-	1.028	54	-	1.132
714	HIGHLAND HEIGHTS HCC	41	-	1.053	74	1	1.144
715	Pepin Manor	34	1	0.750	50	2	0.834
716	Ellsworth Care Center	37	1	0.825	56	1	0.889
718	Pine Crest Nursing Home	133	1	0.838	178	3	0.920
719	Sannes Skogdalen Nursing Facility	33	1	0.912	54	3	0.972
720	Pine Haven Christian Home	28	-	1.197	49	1	1.246
721	Pine Manor Health Care Center	41	-	0.873	61	-	0.895
722	Pine Valley Healthcare & Rehabilitation Center	44	-	1.020	94	1	1.106
723	Rennes Health & Rehab Center - East	93	-	1.028	128	3	1.098
724	Pine View Nursing Home	43	-	0.971	77	3	1.006
726	Pioneer Nursing Home	27	-	0.959	36	-	0.936
728	Crest View Nursing Home	38	-	0.965	58	-	1.000
729	Pleasant View Nursing Home	72	-	0.969	112	5	1.040
730	Pleasant View Nursing Home	30	-	0.919	53	-	0.979
731	Portage County HCC	25	1	1.043	86	7	1.172
732	Prairie Maison	24	-	0.959	64	-	1.019
733	Peabody Manor	15	1	0.941	56	12	1.122
735	Plymouth Care Center	21	-	0.891	40	2	0.909
753	Rennes Health & Rehab Center - West	68	-	1.042	98	5	1.118
754	Rice Lake Convalescent Center	35	-	1.012	52	1	1.087
756	Ledge View Nursing Center	11	-	0.975	23	1	0.971

WI 12/31/2012 Nursing Home Non-DD Residents

Includes in-house and bedhold residents; excludes TBI and ventilator residents; July 2013 MDS/MMIS Extract

PopID	Name	Medicaid FFS Non-DD Residents			All-Resident Non-DD Residents		
		Count	RUG-48 NA	RUG-48 CMI	Count	RUG-48 NA	RUG-48 CMI
757	Golden LivingCenter - Riverdale	27	-	0.974	53	1	1.051
758	Kinnic Long Term Care	25	-	0.965	50	3	1.051
759	The Lutheran Home	23	-	0.873	45	3	1.012
762	Maple Ridge Health and Rehab.	21	-	1.133	73	3	1.220
763	RIVER HILLS WEST HCC	84	-	0.930	130	3	0.926
764	Stevens Point Care Center LLC	12	-	0.968	48	6	1.141
765	Markesan Resident Home	32	2	1.036	51	4	1.100
766	The Woodlands of Oconto	36	1	0.850	42	1	0.869
767	Wisconsin Rapids Care Center, LLC	39	1	0.954	80	6	1.081
768	Crystal River Nursing & Rehab Ctr	29	-	1.038	52	1	1.123
770	Golden Living Center - Riverview	31	-	0.984	46	1	1.036
772	Rock Haven	106	1	0.961	120	1	0.990
774	Rocky Knoll Health Care Facility	87	-	1.006	141	4	1.104
775	Rolling Hills	44	-	0.955	77	3	0.996
776	Rolling Meadows Nursing & Rehab Center	62	1	0.942	101	1	0.991
780	Rusk County Nursing Home	37	-	0.967	43	1	0.988
784	Rennes Health & Rehab Center - De Pere	35	1	1.171	112	10	1.210
785	Rennes Health & Rehab Center - Appleton	20	-	1.019	76	3	1.228
786	Rest Haven Nursing Home	9	-	0.789	17	-	0.813
801	Wheaton Franciscan - Marian Franciscan	54	4	1.194	112	10	1.152
802	Golden LivingCenter - Silver Spring	43	1	1.060	86	3	1.042
803	SAMARITAN HEALTH CENTER	66	-	0.920	116	-	0.994
804	San Luis Medical & Rehab Center	82	2	0.864	112	4	0.961
806	Santa Maria Nursing Home	25	-	1.017	39	-	1.006
807	Sauk County HCC	50	-	0.930	75	-	0.945
809	Schmitt Woodland Hills Inc	6	-	1.028	24	1	1.060
810	Shady Lane	75	-	0.940	118	8	1.037
811	Golden LivingCenter - Kenosha	50	2	0.967	83	6	1.014
812	SEVEN OAKS	34	-	0.918	76	-	1.060
813	Heartland Health Care Center - Shawano	39	-	1.055	65	1	1.149
815	Sheboygan Senior Community, Inc.	32	-	0.961	56	3	1.011
817	Sheridan Medical Complex	39	1	0.933	67	3	0.996
818	WILLIAMS BAY CARE CENTER	40	-	0.921	61	3	0.992
820	Shorehaven Health Center	32	-	0.980	110	9	1.025
821	Skaalen Sunset Home	37	1	0.973	85	6	1.023
822	Sky View Nursing Center	23	1	0.645	31	1	0.706
824	Golden LivingCenter - South Shore	13	-	1.162	31	1	1.217
826	Spring Valley Nursing Home	25	-	0.906	38	-	0.942
827	St. Anne's Home for the Elderly	48	-	0.980	94	8	1.069
828	ST. ANN REST HOME	24	-	0.908	37	-	0.957
829	St. Camillus Health Center	17	-	0.897	61	3	1.138
832	St Croix Health Center	29	-	0.883	47	-	1.017
833	Prescott Nursing and Rehab Center	23	-	0.962	45	3	1.056
834	St. Croix Valley GSC	36	-	0.966	60	3	1.047

WI 12/31/2012 Nursing Home Non-DD Residents

Includes in-house and bedhold residents; excludes TBI and ventilator residents; July 2013 MDS/MMIS Extract

PopID	Name	Medicaid FFS Non-DD Residents			All-Resident Non-DD Residents		
		Count	RUG-48 NA	RUG-48 CMI	Count	RUG-48 NA	RUG-48 CMI
835	St. Francis Home in the Park	34	-	0.946	52	-	0.946
837	St. Francis Home	39	1	1.031	99	11	1.044
839	St. John's Communities, Inc.	7	-	0.923	44	2	0.923
840	MITCHELL MANOR	13	-	1.063	67	2	1.100
841	ST. JOSEPH'S HOME FOR THE AGED	36	-	0.933	84	2	1.042
842	St. Joseph's Nursing Home	23	1	0.971	69	3	1.012
843	Arcadia Nursing Home	47	-	1.044	70	2	1.076
845	St. Joseph Residence	47	-	0.974	94	3	1.086
846	St. Mary's Home for the Aged	42	-	1.007	83	4	1.099
850	St. Paul Elder Services	63	-	0.972	114	4	1.049
853	Crystal Lake Manor	18	-	0.760	34	1	0.815
854	Sunny Hill Health Care Center	20	1	0.984	31	1	1.099
856	Sun Prairie Health Care Center	5	-	1.230	27	2	1.046
857	Sunny Ridge Health & Rehabilitation Center	80	-	1.138	114	5	1.188
858	Sunrise Care Center, Inc.	26	-	1.348	79	3	1.309
859	Oakwood Villa	32	2	1.164	82	9	1.295
860	Eastview Medical & Rehab Center	79	-	0.824	111	3	0.921
861	St. Dominic Villa	60	1	0.872	62	1	0.866
862	Southwest Health Center	33	-	1.043	75	1	1.122
864	Good Samaritan Society - Scandia Village	24	-	1.073	56	5	1.060
865	St Elizabeth's Nursing Home	25	-	0.913	42	-	0.959
880	Plum City Care Center	25	-	1.116	41	1	1.094
881	Oakbrook Manor of Thorp	37	-	0.925	53	-	1.021
882	Tomah Care Center	30	-	1.162	54	-	1.200
884	Trempealeau Co. Health Care Center	24	-	1.133	32	-	1.124
885	Tri-County Memorial Nursing Home	23	1	0.956	34	3	1.040
886	TUDOR OAKS	17	-	1.078	52	6	1.196
887	ALEXIAN VILLAGE	21	-	1.044	95	8	1.124
888	Taylor Park	70	-	0.889	84	3	0.912
889	Terraceview Living Center	28	-	1.019	44	3	1.064
901	United Pioneer Home, Inc.	36	-	0.948	45	-	0.991
910	Beverly Living Center - Valley of Hayward	38	-	1.064	54	-	1.130
913	VERNON MANOR	44	-	0.988	79	-	1.007
915	ALLIS CARE CENTER	69	-	1.033	139	2	1.073
916	Villa Loretto Nursing Home	29	-	1.112	45	1	1.116
917	Villa Pines	45	1	0.976	67	5	1.031
918	VIRGINIA HEALTH AND REHAB. CENTER	47	1	0.872	90	4	0.931
920	Villa Maria Health Care Center	54	-	1.134	66	2	1.141
921	Virginia Highlands Health and Rehab Center	55	2	0.908	93	4	0.988
931	Wausau Manor	21	-	1.248	54	5	1.315
932	Manor Care Health Services - Kenosha	57	-	1.071	112	6	1.175
933	Golden Living Center - Watertown	55	-	1.020	90	3	1.089
934	Waunakee Manor Health Care Center	32	-	0.949	92	4	1.051
936	Golden LivingCenter - Florence	39	-	1.089	52	-	1.141

WI 12/31/2012 Nursing Home Non-DD Residents

Includes in-house and bedhold residents; excludes TBI and ventilator residents; July 2013 MDS/MMIS Extract

PopID	Name	Medicaid FFS Non-DD Residents			All-Resident Non-DD Residents		
		Count	RUG-48 NA	RUG-48 CMI	Count	RUG-48 NA	RUG-48 CMI
937	Beverly LivingCenter - Sheboygan	18	2	1.098	37	4	1.123
939	WAUKESHA SPRINGS HEALTH & REHAB CEN	71	-	0.916	124	3	0.992
942	Weyauwega Health Care Center	20	-	1.234	31	-	1.327
943	Wild Rose Manor	22	-	0.883	35	1	0.945
944	Willowbrook Nursing Home	32	1	1.065	54	2	1.183
945	Willowcrest Care Center	34	-	1.211	120	10	1.258
946	Willowdale Nursing & Rehabilitation Center	22	-	1.321	42	2	1.250
947	Willowfield Nursing & Rehabilitation Center	21	-	1.447	51	2	1.387
948	Woods Crossing at Woods Point	9	1	0.918	18	2	1.063
949	Willows Nursing Home	20	1	1.309	40	4	1.362
951	Park View Health Center	118	-	1.076	161	3	1.101
953	WISCONSIN LUTHERAN CARE CENTER	55	2	1.004	130	4	1.070
954	Masonic Health Care Center	33	-	1.056	76	5	1.129
957	BROOKFIELD REHABILITATION CENTER	80	-	1.077	131	5	1.130
958	Woodside Lutheran Home	62	-	1.031	116	8	1.073
959	Woodstock Health & Rehab Center	52	2	0.991	84	4	1.077
965	Woodland Village	29	-	0.854	45	2	0.896
980	Gilman Care Center	17	1	0.982	30	1	1.110
982	North Central HCF	156	-	0.979	229	7	1.108

Current BEHCI Payment Approach

		Less Severe Most Severe						
		CDPS Grouper (based on ICD9 Diagnosis Codes)						
Less Severe		No Psychiatric Diagnosis	"Super Low" Psych Diagnosis	"Low" Psych Diagnosis	"Medium Low" Psych Diagnosis	"Medium" Psych Diagnosis	"High" Psych Diagnosis	Non-DD FFS Residents
 Current BEHCI Score	0	2434	603	1826	263	176	135	5437
	0 > 1	1359	338	1010	157	124	106	3094
	1 => 3	2366	663	1965	319	253	403	5969
	3 => 5	149	67	222	48	28	48	562
	5 => 10	54	29	105	21	15	25	249
	10 or more	9	2	11	2	5	1	30
	More Severe	Grand Total	6371	1702	5139	810	601	718
		Payment Adjustments for Use of Restraints:		None				
		Payment Adjustments for Use of Psychotropic Meds:		None				

SF14 BEHCI Payment Approach

		Less Severe Most Severe						
		CDPS Grouper (based on ICD9 Diagnosis Codes)						
Less Severe		No Psychiatric Diagnosis	"Super Low" Psych Diagnosis	"Low" Psych Diagnosis	"Medium Low" Psych Diagnosis	"Medium" Psych Diagnosis	"High" Psych Diagnosis	Non-DD FFS Residents
 Current BEHCI Score	0	2434	603	1826	263	176	135	5437
	0 > 1	1359	338	1010	157	124	106	3094
	1 => 3	2366	663	1965	319	253	403	5969
	3 => 5	149	67	222	48	28	48	562
	5 => 10	54	29	105	21	15	25	249
	10 or more	9	2	11	2	5	1	30
	More Severe	Grand Total	6371	1702	5139	810	601	718
		Payment Adjustments for Use of Restraints:		Review in SFY15				
		Payment Adjustments for Use of Psychotropic Meds:		Review in SFY15				

Notes:

Shaded cells indicate residents for whom a BEHCI incentive payment is calculated. No shading = no incentive.

Darker shading indicates greater weight (more payment).

Diagnosis category descriptions (eg "Super Low," "Medium Low," etc) refer to cost impacts.

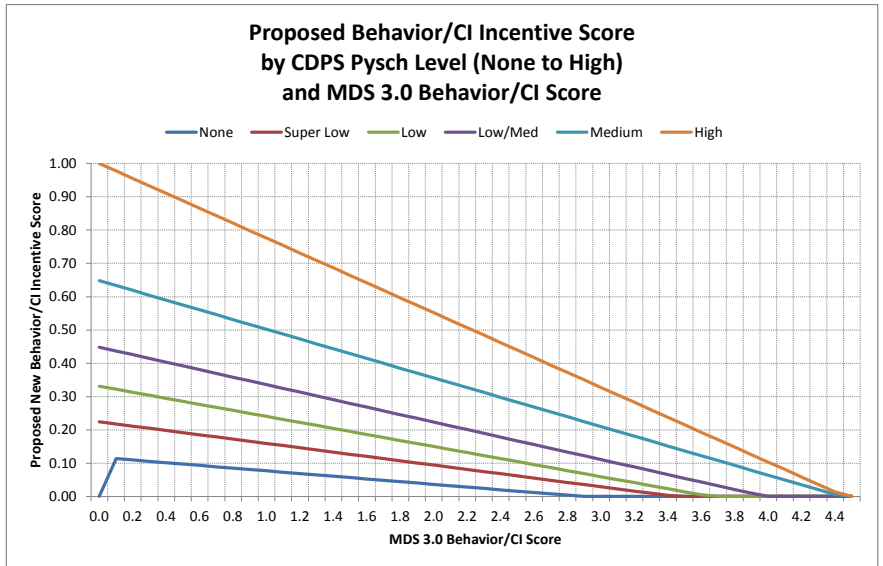
WI Behavior/CI Scoring Formula - Nursing Home Residents

CDPS Level	MDS 3.0 Beh/CI Score									
	Average	Std Dev	Avg + 1 SD	Avg + 2 SD	Median	75%-tile	80%-tile	85%-tile	90%-tile	95%-tile
0	0.777	1.057	1.834	2.892	0.750	1.000	1.000	1.200	1.600	2.500
1	0.935	1.254	2.192	3.447	0.750	1.000	1.290	1.560	2.200	3.240
2	0.994	1.331	2.325	3.656	0.750	1.200	1.500	1.800	2.400	3.400
3	1.095	1.445	2.540	3.985	0.750	1.200	1.600	1.950	2.620	4.065
4	1.157	1.641	2.798	4.438	0.750	1.350	1.600	1.953	2.550	3.935
5	1.402	1.529	2.931	4.460	1.000	1.800	2.200	2.500	3.000	4.340

2.892	3.447	3.656	3.985	4.438	4.460	Maximum MDS Beh/CI Score Allowed
0.1216	0.1216	0.1216	0.1216	0.1216	0.1216	CDPS Regression Intercept
-	0.1104	0.2208	0.3422	0.5489	0.9132	CDPS Psych Level Regression Weight
0.1216	0.2320	0.3424	0.4638	0.6705	1.0347	Total CDPS Regression Weight
0.118	0.224	0.331	0.448	0.648	1.000	Rescaled CDPS Psych Level Factor

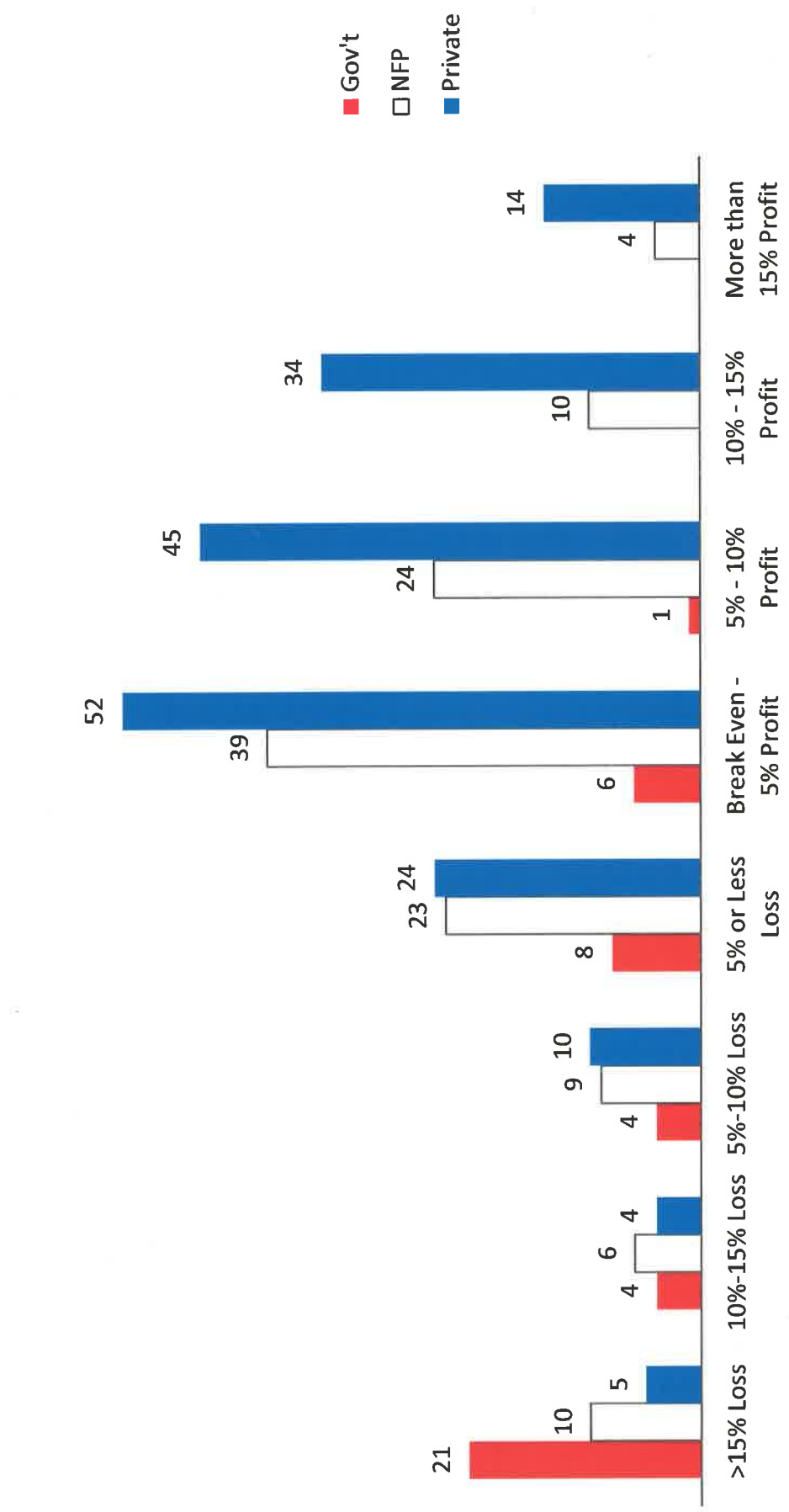
Formula: Score = CDPS Psych Level Factor x (1 - MDS Beh/CI Score / Max MDS Score Allowed)

Behavior/CI Incentive Score by MDS Score and CDPS Psych Level						
MDS Beh/CI Score	None	Super Low	Low	Low/Med	Medium	High
-	-	0.224	0.331	0.448	0.648	1.000
0.100	0.113	0.218	0.322	0.437	0.633	0.978
0.200	0.109	0.211	0.313	0.426	0.619	0.955
0.300	0.105	0.205	0.304	0.414	0.604	0.933
0.400	0.101	0.198	0.295	0.403	0.590	0.910
0.500	0.097	0.192	0.286	0.392	0.575	0.888
0.600	0.093	0.185	0.277	0.381	0.560	0.865
0.700	0.089	0.179	0.268	0.369	0.546	0.843
0.800	0.085	0.172	0.258	0.358	0.531	0.821
0.900	0.081	0.166	0.249	0.347	0.517	0.798
1.000	0.077	0.159	0.240	0.336	0.502	0.776
1.100	0.073	0.153	0.231	0.324	0.487	0.753
1.200	0.069	0.146	0.222	0.313	0.473	0.731
1.300	0.065	0.140	0.213	0.302	0.458	0.709
1.400	0.061	0.133	0.204	0.291	0.444	0.686
1.500	0.057	0.127	0.195	0.279	0.429	0.664
1.600	0.052	0.120	0.186	0.268	0.414	0.641
1.700	0.048	0.114	0.177	0.257	0.400	0.619
1.800	0.044	0.107	0.168	0.246	0.385	0.596
1.900	0.040	0.101	0.159	0.234	0.371	0.574
2.000	0.036	0.094	0.150	0.223	0.356	0.552
2.100	0.032	0.088	0.141	0.212	0.341	0.529
2.200	0.028	0.081	0.132	0.201	0.327	0.507
2.300	0.024	0.075	0.123	0.189	0.312	0.484
2.400	0.020	0.068	0.114	0.178	0.298	0.462
2.500	0.016	0.062	0.105	0.167	0.283	0.439
2.600	0.012	0.055	0.096	0.156	0.268	0.417
2.700	0.008	0.049	0.087	0.144	0.254	0.395
2.800	0.004	0.042	0.077	0.133	0.239	0.372
2.900	-	0.036	0.068	0.122	0.225	0.350
3.000	-	0.029	0.059	0.111	0.210	0.327
3.100	-	0.023	0.050	0.099	0.195	0.305
3.200	-	0.016	0.041	0.088	0.181	0.283
3.300	-	0.010	0.032	0.077	0.166	0.260
3.400	-	0.003	0.023	0.066	0.152	0.238
3.500	-	-	0.014	0.054	0.137	0.215
3.600	-	-	0.005	0.043	0.122	0.193
3.700	-	-	-	0.032	0.108	0.170
3.800	-	-	-	0.021	0.093	0.148
3.900	-	-	-	0.010	0.079	0.126
4.000	-	-	-	-	0.064	0.103
4.100	-	-	-	-	0.049	0.081
4.200	-	-	-	-	0.035	0.058
4.300	-	-	-	-	0.020	0.036
4.400	-	-	-	-	0.006	0.014
4.500	-	-	-	-	-	-



Nursing Home Profitability by Ownership Type

All Payer Sources



FC SP Award Has Not Kept Pace with FC Patient Days

Comparison of Family Care to Fee For Service, FY06-FY13

